

DATASHEET
NHE6 Rabbit Polyclonal Antibody
CAT. NO. APA07940
KEY FEATURES

Target	NHE6	Source / Host	Rabbit
Reactivity	Human, Mouse, Rat, Bovine, Chicken, Dog, Pig, Rabbit	Clonality	Polyclonal
Applications	WB, IHC	Conjugation	Unconjugated
Form / Buffer	Liquid in 0.42% Potassium phosphate, 0.87% Sodium chloride, pH 7.3, 30% glycerol, and 0.01% sodium azide.		Storage at -20°C

BACKGROUND

Endosomal Na(+), K(+)/H(+) antiporter, K(+)/H(+) antiporter. Mediates the electroneutral exchange of endosomal luminal H(+) for a cytosolic Na(+) or K(+). By facilitating proton efflux, SLC9A6 counteracts the acidity generated by vacuolar (V)-ATPase, thereby limiting luminal acidification. Responsible for alkalizing and maintaining the endosomal pH, and consequently in, e.g., endosome maturation and trafficking of recycling endosomal cargo. Plays a critical role during neurodevelopment by regulating synaptic development and plasticity. Implicated in the maintenance of cell polarity in a manner that is dependent on its ability to modulate intravesicular pH.

APPLICATION

To ensure optimal assay performance, AREX recommends conducting reagent titration tailored to each testing system for optimal detection results.

WB	1:500 - 1:1000
IHC	1:50 - 1:100

*Results are sample-specific. Please refer to your local assay conditions and test parameters for reference.

PRODUCT OVERVIEW

Description	Rabbit polyclonal antibody to NHE6
Specificity	Recognizes endogenous levels of NHE6 protein.
Antibody Type	Primary antibody
Immunogen	KLH-conjugated synthetic peptide encompassing a sequence within the center region of human NHE6. The exact sequence is proprietary.
Purification	The antibody was purified by immunogen affinity chromatography.
Molecular Weight	Predicted: 77 kD; Observed: 77 kD
Form/Buffer	Liquid in 0.42% Potassium phosphate, 0.87% Sodium chloride, pH 7.3, 30% glycerol, and 0.01% sodium azide.
Alternative Names	KIAA0267; NHE6; Sodium/hydrogen exchanger 6; Na(+)/H(+) exchanger 6; NHE-6; Solute carrier family 9 member 6
Gene Symbol	SLC9A6
Entrez Gene	10479(Human)
SwissProt	Q92581(Human)

*AREX continuously optimizes our products. Webpage content may not reflect the latest updates. For inquiries, please contact info@arexbio.com or your local distributor.

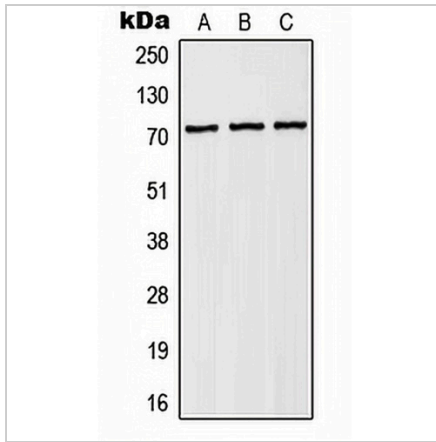
*Clone Number, Reactivity, Source/Host and Clonality can be found in the product name and Key Features section above.

DATASHEET

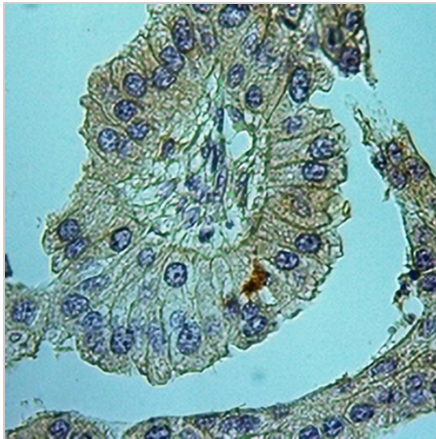
NHE6 Rabbit Polyclonal Antibody

CAT. NO. APA07940

DATA



Western blot analysis of NHE6 expression in HEK293T (A), Raw264.7 (B), PC12 (C) whole cell lysates. (Predicted band size: 77 kD; Observed band size: 77 kD)



Immunohistochemical analysis of NHE6 staining in human lung cancer formalin fixed paraffin embedded tissue section. The section was pre-treated using heat mediated antigen retrieval with sodium citrate buffer (pH 6.0). The section was then incubated with the antibody at room temperature and detected using an HRP conjugated compact polymer system. DAB was used as the chromogen. The section was then counterstained with haematoxylin and mounted with DPX.

STORAGE

Store at 4°C short term. For long term storage, store at -20°C, avoiding freeze/thaw cycles.

NOTE

For Research Use Only. Not for diagnostic, therapeutics, prophylactic or in vivo use.