

DATASHEET

POLR3C Rabbit Polyclonal Antibody

CAT. NO. APA07950

KEY FEATURES

Target	POLR3C	Source / Host	Rabbit
Reactivity	Human, Mouse, Rat	Clonality	Polyclonal
Applications	WB	Conjugation	Unconjugated
Form / Buffer	Liquid in 0.42% Potassium phosphate, 0.87% Sodium chloride, pH 7.3, 30% glycerol, and 0.01% sodium azide.		Storage at -20°C

BACKGROUND

DNA-dependent RNA polymerase catalyzes the transcription of DNA into RNA using the four ribonucleoside triphosphates as substrates. Specific peripheric component of RNA polymerase III (Pol III) which synthesizes small non-coding RNAs including 5S rRNA, snRNAs, tRNAs and miRNAs from at least 500 distinct genomic loci. Part of POLR3C/RPC3-POLR3F/RPC6-POLR3G/RPC7 heterotrimer, coordinates the dynamics of Pol III stalk and clamp modules during the transition from apo to elongation state. Pol III plays a key role in sensing and limiting infection by intracellular bacteria and DNA viruses. Acts as a nuclear and cytosolic DNA sensor involved in innate immune response. Can sense non-self dsDNA that serves as template for transcription into dsRNA.

APPLICATION

To ensure optimal assay performance, AREX recommends conducting reagent titration tailored to each testing system for optimal detection results.

WB	1:500 - 1:1000
----	----------------

*Results are sample-specific. Please refer to your local assay conditions and test parameters for reference.

PRODUCT OVERVIEW

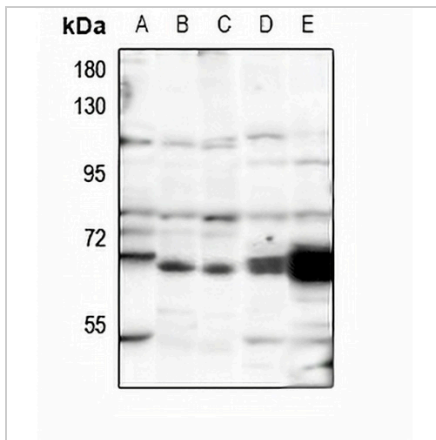
Description	Rabbit polyclonal antibody to POLR3C
Specificity	Recognizes endogenous levels of POLR3C protein.
Antibody Type	Primary antibody
Immunogen	KLH-conjugated synthetic peptide encompassing a sequence within the center region of human POLR3C. The exact sequence is proprietary.
Purification	The antibody was purified by immunogen affinity chromatography.
Molecular Weight	Predicted: 60 kD; Observed: 61 kD
Form/Buffer	Liquid in 0.42% Potassium phosphate, 0.87% Sodium chloride, pH 7.3, 30% glycerol, and 0.01% sodium azide.
Alternative Names	DNA-directed RNA polymerase III subunit RPC3; RNA polymerase III subunit C3; DNA-directed RNA polymerase III subunit C; RNA polymerase III 62 kDa subunit; RPC62
Gene Symbol	POLR3C
Entrez Gene	10623(Human)
SwissProt	Q9BUI4(Human)

*AREX continuously optimizes our products. Webpage content may not reflect the latest updates. For inquiries, please contact info@arexbio.com or your local distributor.

*Clone Number, Reactivity, Source/Host and Clonality can be found in the product name and Key Features section above.

DATASHEET**POLR3C Rabbit Polyclonal Antibody**

CAT. NO. APA07950

DATA

Western blot analysis of POLR3C expression in CT26 (A), PC12 (B), HeLa (C), COS7 (D), A549 (E) whole cell lysates. (Predicted band size: 60 kD; Observed band size: 61 kD)

STORAGE

Store at 4°C short term. For long term storage, store at -20°C, avoiding freeze/thaw cycles.

NOTE

For Research Use Only. Not for diagnostic, therapeutics, prophylactic or in vivo use.