

**DATASHEET**

**MASP2 Rabbit Polyclonal Antibody**

CAT. NO. APA07958

**KEY FEATURES**

Target	MASP2	Source / Host	Rabbit
Reactivity	Human, Mouse, Rat	Clonality	Polyclonal
Applications	WB	Conjugation	Unconjugated
Form / Buffer	Liquid in 0.42% Potassium phosphate, 0.87% Sodium chloride, pH 7.3, 30% glycerol, and 0.01% sodium azide.		Storage at -20°C

**BACKGROUND**

Precursor of a serum protease that activates the lectin pathway of the complement system, a cascade of proteins that leads to phagocytosis and breakdown of pathogens and signaling that strengthens the adaptive immune system . The lectin complement system is activated following association of lectins, such as MBL2, FCN1, FCN2 or FCN3, to carbohydrates on the pathogen surface . MASP2 is cleaved and activated by MASP1 in response to lectin-binding to pathogen carbohydrates . Can activate prothrombin to thrombin .

**APPLICATION**

To ensure optimal assay performance, AREX recommends conducting reagent titration tailored to each testing system for optimal detection results.

WB	1:500 - 1:1000
----	----------------

\*Results are sample-specific. Please refer to your local assay conditions and test parameters for reference.

**PRODUCT OVERVIEW**

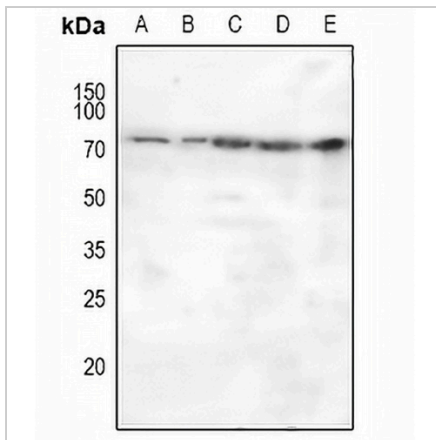
Description	Rabbit polyclonal antibody to MASP2
Specificity	Recognizes endogenous levels of MASP2 protein.
Antibody Type	Primary antibody
Immunogen	KLH-conjugated synthetic peptide encompassing a sequence within the center region of human MASP2. The exact sequence is proprietary.
Purification	The antibody was purified by immunogen affinity chromatography.
Molecular Weight	Predicted: 75 kD; Observed: 76 kD
Form/Buffer	Liquid in 0.42% Potassium phosphate, 0.87% Sodium chloride, pH 7.3, 30% glycerol, and 0.01% sodium azide.
Alternative Names	Mannan-binding lectin serine protease 2; MBL-associated serine protease 2; Mannose-binding protein-associated serine protease 2; MASP-2
Gene Symbol	MASP2
Entrez Gene	10747(Human); 17175(Mouse)
SwissProt	O00187(Human); Q91WP0(Mouse)

\*AREX continuously optimizes our products. Webpage content may not reflect the latest updates. For inquiries, please contact [info@arexbio.com](mailto:info@arexbio.com) or your local distributor.

\*Clone Number, Reactivity, Source/Host and Clonality can be found in the product name and Key Features section above.

**DATASHEET****MASP2 Rabbit Polyclonal Antibody**

CAT. NO. APA07958

**DATA**

Western blot analysis of MASP2 expression in HeLa (A), LO2 (B), HCT116 (C), CT26 (D), H9C2 (E) whole cell lysates. (Predicted band size: 75 kD; Observed band size: 76 kD)

**STORAGE**

Store at 4°C short term. For long term storage, store at -20°C, avoiding freeze/thaw cycles.

**NOTE**

For Research Use Only. Not for diagnostic, therapeutics, prophylactic or in vivo use.