

DATASHEET

RAB31 Rabbit Polyclonal Antibody

CAT. NO. APA07976

KEY FEATURES

Target	RAB31	Source / Host	Rabbit
Reactivity	Human, Mouse, Rat, Bovine, Pig	Clonality	Polyclonal
Applications	WB	Conjugation	Unconjugated
Form / Buffer	Liquid in 0.42% Potassium phosphate, 0.87% Sodium chloride, pH 7.3, 30% glycerol, and 0.01% sodium azide.		Storage at-20°C

BACKGROUND

The small GTPases Rab are key regulators of intracellular membrane trafficking, from the formation of transport vesicles to their fusion with membranes. Rabs cycle between an inactive GDP-bound form and an active GTP-bound form that is able to recruit to membranes different set of downstream effectors directly responsible for vesicle formation, movement, tethering and fusion. Required for the integrity and for normal function of the Golgi apparatus and the trans-Golgi network. Plays a role in insulin-stimulated translocation of GLUT4 to the cell membrane. Plays a role in M6PR transport from the trans-Golgi network to endosomes. Plays a role in the internalization of EGFR from the cell membrane into endosomes.

APPLICATION

To ensure optimal assay performance, AREX recommends conducting reagent titration tailored to each testing system for optimal detection results.

WB	1:500 - 1:1000
----	----------------

*Results are sample-specific. Please refer to your local assay conditions and test parameters for reference.

PRODUCT OVERVIEW

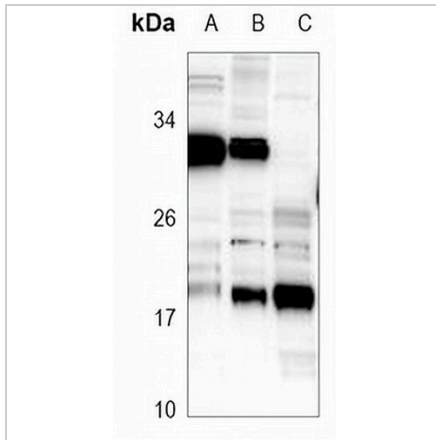
Description	Rabbit polyclonal antibody to RAB31
Specificity	Recognizes endogenous levels of RAB31 protein.
Antibody Type	Primary antibody
Immunogen	KLH-conjugated synthetic peptide encompassing a sequence within the center region of human RAB31. The exact sequence is proprietary.
Purification	The antibody was purified by immunogen affinity chromatography.
Molecular Weight	Predicted: 21 kD; Observed: 22 kD
Form/Buffer	Liquid in 0.42% Potassium phosphate, 0.87% Sodium chloride, pH 7.3, 30% glycerol, and 0.01% sodium azide.
Alternative Names	RAB22B; Ras-related protein Rab-31; Ras-related protein Rab-22B
Gene Symbol	RAB31
Entrez Gene	11031(Human); 106572(Mouse); 246324(Rat)
SwissProt	Q13636(Human); Q921E2(Mouse); Q6GQP4(Rat)

*AREX continuously optimizes our products. Webpage content may not reflect the latest updates. For inquiries, please contact info@arexbio.com or your local distributor.

*Clone Number, Reactivity, Source/Host and Clonality can be found in the product name and Key Features section above.

DATASHEET**RAB31 Rabbit Polyclonal Antibody**

CAT. NO. APA07976

DATA

Western blot analysis of RAB31 expression in HEK293T (A), HeLa (B), SHSY5Y (C) whole cell lysates. (Predicted band size: 21 kD; Observed band size: 22 kD)

STORAGE

Store at 4°C short term. For long term storage, store at -20°C, avoiding freeze/thaw cycles.

NOTE

For Research Use Only. Not for diagnostic, therapeutics, prophylactic or in vivo use.