

DATASHEET

CYB561D2 Rabbit Polyclonal Antibody

CAT. NO. APA07977

KEY FEATURES

Target	CYB561D2	Source / Host	Rabbit
Reactivity	Human, Mouse, Rat	Clonality	Polyclonal
Applications	WB	Conjugation	Unconjugated
Form / Buffer	Liquid in 0.42% Potassium phosphate, 0.87% Sodium chloride, pH 7.3, 30% glycerol, and 0.01% sodium azide.		Storage at -20°C

BACKGROUND

Transmembrane reductase that may use ascorbate as an electron donor in the cytoplasm and transfer electrons across endoplasmic reticulum membranes to reduce monodehydro-L-ascorbate radical and iron cations Fe(3+) in the lumen of that compartment.

APPLICATION

To ensure optimal assay performance, AREX recommends conducting reagent titration tailored to each testing system for optimal detection results.

WB	1:500 - 1:1000
----	----------------

*Results are sample-specific. Please refer to your local assay conditions and test parameters for reference.

PRODUCT OVERVIEW

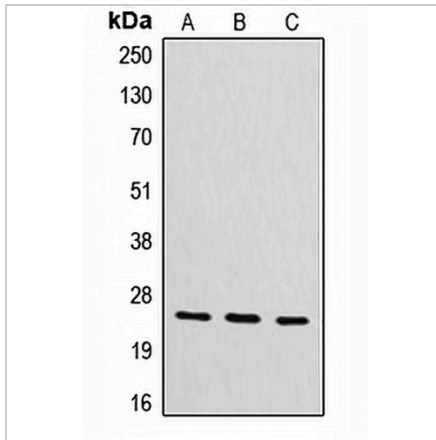
Description	Rabbit polyclonal antibody to CYB561D2
Specificity	Recognizes endogenous levels of CYB561D2 protein.
Antibody Type	Primary antibody
Immunogen	KLH-conjugated synthetic peptide encompassing a sequence within the center region of human CYB561D2. The exact sequence is proprietary.
Purification	The antibody was purified by immunogen affinity chromatography.
Molecular Weight	Predicted: 23 kD; Observed: 24 kD
Form/Buffer	Liquid in 0.42% Potassium phosphate, 0.87% Sodium chloride, pH 7.3, 30% glycerol, and 0.01% sodium azide.
Alternative Names	101F6; Cytochrome b561 domain-containing protein 2; Putative tumor suppressor protein 101F6
Gene Symbol	CYB561D2
Entrez Gene	11068(Human); 56368(Mouse); 363137(Rat)
SwissProt	O14569(Human); Q9WUE3(Mouse); Q641Y1(Rat)

*AREX continuously optimizes our products. Webpage content may not reflect the latest updates. For inquiries, please contact info@arexbio.com or your local distributor.

*Clone Number, Reactivity, Source/Host and Clonality can be found in the product name and Key Features section above.

DATASHEET**CYB561D2 Rabbit Polyclonal Antibody**

CAT. NO. APA07977

DATA

Western blot analysis of CYB561D2 expression in HeLa (A), mouse liver (B), rat kidney (C) whole cell lysates. (Predicted band size: 23 kD; Observed band size: 24 kD)

STORAGE

Store at 4°C short term. For long term storage, store at -20°C, avoiding freeze/thaw cycles.

NOTE

For Research Use Only. Not for diagnostic, therapeutics, prophylactic or in vivo use.