

DATASHEET

SLC6A14 Rabbit Polyclonal Antibody

CAT. NO. APA07992

KEY FEATURES

Target	SLC6A14	Source / Host	Rabbit
Reactivity	Human	Clonality	Polyclonal
Applications	WB	Conjugation	Unconjugated
Form / Buffer	Liquid in 0.42% Potassium phosphate, 0.87% Sodium chloride, pH 7.3, 30% glycerol, and 0.01% sodium azide.		Storage at -20°C

BACKGROUND

Amino acid transporter that plays an important role in the absorption of amino acids in the intestinal tract. Mediates the uptake of a broad range of neutral and cationic amino acids (with the exception of proline) in a Na⁽⁺⁾/Cl⁽⁻⁾-dependent manner in a Na⁽⁺⁾/Cl⁽⁻⁾-dependent manner. Transports non-alpha-amino acids such as beta-alanine with low affinity, and has a higher affinity for dipolar and cationic amino acids such as leucine and lysine. Can also transport carnitine, butyrylcarnitine and propionylcarnitine coupled to the transmembrane gradients of Na⁽⁺⁾ and Cl⁽⁻⁾.

APPLICATION

To ensure optimal assay performance, AREX recommends conducting reagent titration tailored to each testing system for optimal detection results.

WB	1:500 - 1:1000
----	----------------

*Results are sample-specific. Please refer to your local assay conditions and test parameters for reference.

PRODUCT OVERVIEW

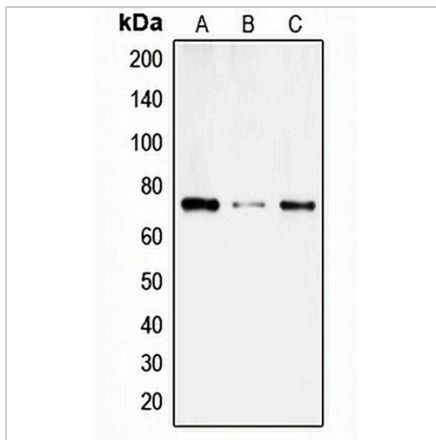
Description	Rabbit polyclonal antibody to SLC6A14
Specificity	Recognizes endogenous levels of SLC6A14 protein.
Antibody Type	Primary antibody
Immunogen	KLH-conjugated synthetic peptide encompassing a sequence within the C-term region of human SLC6A14. The exact sequence is proprietary.
Purification	The antibody was purified by immunogen affinity chromatography.
Molecular Weight	Predicted: 72 kD; Observed: 72 kD
Form/Buffer	Liquid in 0.42% Potassium phosphate, 0.87% Sodium chloride, pH 7.3, 30% glycerol, and 0.01% sodium azide.
Alternative Names	Sodium- and chloride-dependent neutral and basic amino acid transporter B ⁽⁰⁺⁾ ; Amino acid transporter ATB ⁰⁺ ; Solute carrier family 6 member 14
Gene Symbol	SLC6A14
Entrez Gene	11254(Human)
SwissProt	Q9UN76(Human)

*AREX continuously optimizes our products. Webpage content may not reflect the latest updates. For inquiries, please contact info@arexbio.com or your local distributor.

*Clone Number, Reactivity, Source/Host and Clonality can be found in the product name and Key Features section above.

DATASHEET**SLC6A14 Rabbit Polyclonal Antibody**

CAT. NO. APA07992

DATA

Western blot analysis of SLC6A14 expression in SKNMC (A), COLO205 (B), HL60 (C) whole cell lysates. (Predicted band size: 72 kD; Observed band size: 72 kD)

STORAGE

Store at 4°C short term. For long term storage, store at -20°C, avoiding freeze/thaw cycles.

NOTE

For Research Use Only. Not for diagnostic, therapeutics, prophylactic or in vivo use.