

**DATASHEET**

**FASTKD2 Rabbit Polyclonal Antibody**

CAT. NO. APA08000

**KEY FEATURES**

Target	FASTKD2	Source / Host	Rabbit
Reactivity	Human, Mouse, Rat	Clonality	Polyclonal
Applications	WB	Conjugation	Unconjugated
Form / Buffer	Liquid in 0.42% Potassium phosphate, 0.87% Sodium chloride, pH 7.3, 30% glycerol, and 0.01% sodium azide.		Storage at -20°C

**BACKGROUND**

Plays an important role in assembly of the mitochondrial large ribosomal subunit . As a component of a functional protein-RNA module, consisting of RCC1L, NGRN, RPU5D3, RPU5D4, TRUB2, FASTKD2 and 16S mitochondrial ribosomal RNA (16S mt-rRNA), controls 16S mt-rRNA abundance and is required for intra-mitochondrial translation . May play a role in mitochondrial apoptosis.

**APPLICATION**

To ensure optimal assay performance, AREX recommends conducting reagent titration tailored to each testing system for optimal detection results.

WB	1:500 - 1:1000
----	----------------

\*Results are sample-specific. Please refer to your local assay conditions and test parameters for reference.

**PRODUCT OVERVIEW**

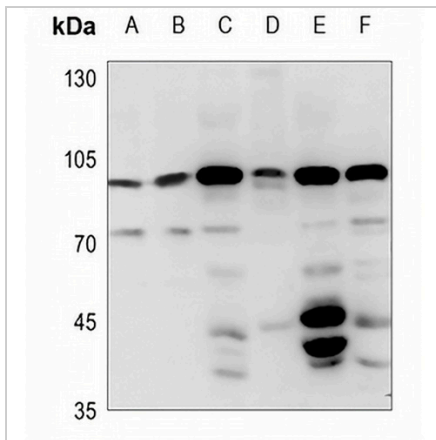
Description	Rabbit polyclonal antibody to FASTKD2
Specificity	Recognizes endogenous levels of FASTKD2 protein.
Antibody Type	Primary antibody
Immunogen	KLH-conjugated synthetic peptide encompassing a sequence within the center region of human FASTKD2. The exact sequence is proprietary.
Purification	The antibody was purified by immunogen affinity chromatography.
Molecular Weight	Predicted: 81 kD; Observed: 95 kD
Form/Buffer	Liquid in 0.42% Potassium phosphate, 0.87% Sodium chloride, pH 7.3, 30% glycerol, and 0.01% sodium azide.
Alternative Names	KIAA0971; FAST kinase domain-containing protein 2
Gene Symbol	FASTKD2
Entrez Gene	22868(Human); 75619(Mouse); 301463(Rat)
SwissProt	Q9NYY8(Human); Q922E6(Mouse); Q5M7V7(Rat)

\*AREX continuously optimizes our products. Webpage content may not reflect the latest updates. For inquiries, please contact [info@arexbio.com](mailto:info@arexbio.com) or your local distributor.

\*Clone Number, Reactivity, Source/Host and Clonality can be found in the product name and Key Features section above.

**DATASHEET****FASTKD2 Rabbit Polyclonal Antibody**

CAT. NO. APA08000

**DATA**

Western blot analysis of FASTKD2 expression in H446 (A), A549 (B), mouse liver (C), mouse lung (D), rat liver (E), rat lung (F) whole cell lysates. (Predicted band size: 81 kD; Observed band size: 95 kD)

**STORAGE**

Store at 4°C short term. For long term storage, store at -20°C, avoiding freeze/thaw cycles.

**NOTE**

For Research Use Only. Not for diagnostic, therapeutics, prophylactic or in vivo use.