

DATASHEET

EB3 Rabbit Polyclonal Antibody

CAT. NO. APA08001

KEY FEATURES

Target	EB3	Source / Host	Rabbit
Reactivity	Human, Mouse, Rat, Bovine, Monkey	Clonality	Polyclonal
Applications	WB, IF/ICC	Conjugation	Unconjugated
Form / Buffer	Liquid in 0.42% Potassium phosphate, 0.87% Sodium chloride, pH 7.3, 30% glycerol, and 0.01% sodium azide.		Storage at -20°C

BACKGROUND

Plus-end tracking protein (+TIP) that binds to the plus-end of microtubules and regulates the dynamics of the microtubule cytoskeleton that binds to the plus-end of microtubules and regulates the dynamics of the microtubule cytoskeleton . Promotes microtubule growth . May be involved in spindle function by stabilizing microtubules and anchoring them at centrosomes . Also acts as a regulator of minus-end microtubule organization: interacts with the complex formed by AKAP9 and PDE4DIP, leading to recruit CAMSAP2 to the Golgi apparatus, thereby tethering non-centrosomal minus-end microtubules to the Golgi, an important step for polarized cell movement . Promotes elongation of CAMSAP2-decorated microtubule stretches on the minus-end of microtubules .

APPLICATION

To ensure optimal assay performance, AREX recommends conducting reagent titration tailored to each testing system for optimal detection results.

WB	1:500 - 1:1000
IF/ICC	1:50 - 1:200

*Results are sample-specific. Please refer to your local assay conditions and test parameters for reference.

PRODUCT OVERVIEW

Description	Rabbit polyclonal antibody to EB3
Specificity	Recognizes endogenous levels of EB3 protein.
Antibody Type	Primary antibody
Immunogen	KLH-conjugated synthetic peptide encompassing a sequence within the C-term region of human EB3. The exact sequence is proprietary.
Purification	The antibody was purified by immunogen affinity chromatography.
Molecular Weight	Predicted: 31 kD; Observed: 32 kD
Form/Buffer	Liquid in 0.42% Potassium phosphate, 0.87% Sodium chloride, pH 7.3, 30% glycerol, and 0.01% sodium azide.
Alternative Names	Microtubule-associated protein RP/EB family member 3; EB1 protein family member 3; EBF3; End-binding protein 3; EB3; RP3
Gene Symbol	MAPRE3
Entrez Gene	22924(Human); 100732(Mouse); 298848(Rat)
SwissProt	Q9UPY8(Human); Q6PER3(Mouse); Q5XIT1(Rat)

*AREX continuously optimizes our products. Webpage content may not reflect the latest updates. For inquiries, please contact info@arexbio.com or your local distributor.

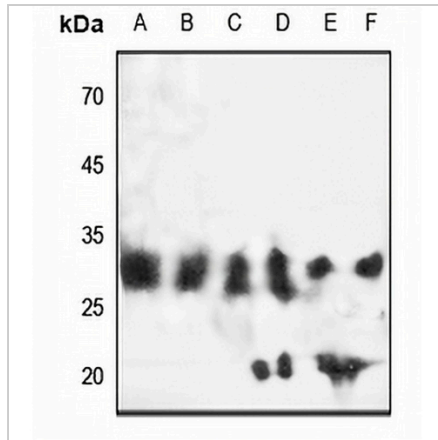
*Clone Number, Reactivity, Source/Host and Clonality can be found in the product name and Key Features section above.

DATASHEET

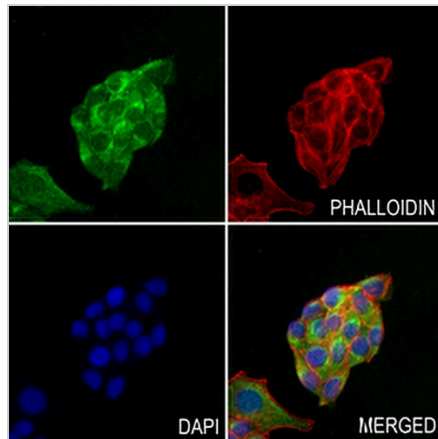
EB3 Rabbit Polyclonal Antibody

CAT. NO. APA08001

DATA



Western blot analysis of EB3 expression in HEK293T (A), HeLa (B), DLD (C), mouse brain (D), mouse muscle (E), rat muscle (F) whole cell lysates. (Predicted band size: 31 kD; Observed band size: 32 kD)



Immunofluorescent analysis of EB3 staining in HepG2 cells. Formalin-fixed cells were permeabilized with 0.1% Triton X-100 in TBS for 5-10 minutes and blocked with 3% BSA-PBS for 30 minutes at room temperature. Cells were probed with the primary antibody in 3% BSA-PBS and incubated overnight at 4 °C in a humidified chamber. Cells were washed with PBST and incubated with a AREX® Fluor 488 -conjugated secondary antibody (green) in PBS at room temperature in the dark. Phalloidin - AREX® Fluor 594 was used to stain Actin filaments (red). DAPI was used to stain the cell nuclei (blue).

STORAGE

Store at 4°C short term. For long term storage, store at -20°C, avoiding freeze/thaw cycles.

NOTE

For Research Use Only. Not for diagnostic, therapeutics, prophylactic or in vivo use.