

**DATASHEET**

**FAIM2 Rabbit Polyclonal Antibody**

CAT. NO. APA08005

**KEY FEATURES**

Target	FAIM2	Source / Host	Rabbit
Reactivity	Human, Mouse	Clonality	Polyclonal
Applications	WB, IHC	Conjugation	Unconjugated
Form / Buffer	Liquid in 0.42% Potassium phosphate, 0.87% Sodium chloride, pH 7.3, 30% glycerol, and 0.01% sodium azide.		Storage at -20°C

**BACKGROUND**

Antiapoptotic protein which protects cells uniquely from Fas-induced apoptosis. Regulates Fas-mediated apoptosis in neurons by interfering with caspase-8 activation. May play a role in cerebellar development by affecting cerebellar size, internal granular layer (IGL) thickness, and Purkinje cell (PC) development.

**APPLICATION**

To ensure optimal assay performance, AREX recommends conducting reagent titration tailored to each testing system for optimal detection results.

WB	1:500 - 1:1000
IHC	1:50 - 1:100

\*Results are sample-specific. Please refer to your local assay conditions and test parameters for reference.

**PRODUCT OVERVIEW**

Description	Rabbit polyclonal antibody to FAIM2
Specificity	Recognizes endogenous levels of FAIM2 protein.
Antibody Type	Primary antibody
Immunogen	KLH-conjugated synthetic peptide encompassing a sequence within the N-term region of human FAIM2. The exact sequence is proprietary.
Purification	The antibody was purified by immunogen affinity chromatography.
Molecular Weight	Predicted: 35 kD; Observed: 36 kD
Form/Buffer	Liquid in 0.42% Potassium phosphate, 0.87% Sodium chloride, pH 7.3, 30% glycerol, and 0.01% sodium azide.
Alternative Names	KIAA0950; LFG; LFG2; NMP35; TMBIM2; Protein lifeguard 2; Fas apoptotic inhibitory molecule 2; Neural membrane protein 35; Transmembrane BAX inhibitor motif-containing protein 2
Gene Symbol	FAIM2
Entrez Gene	23017(Human)
SwissProt	Q9BWQ8(Human)

\*AREX continuously optimizes our products. Webpage content may not reflect the latest updates. For inquiries, please contact [info@arexbio.com](mailto:info@arexbio.com) or your local distributor.

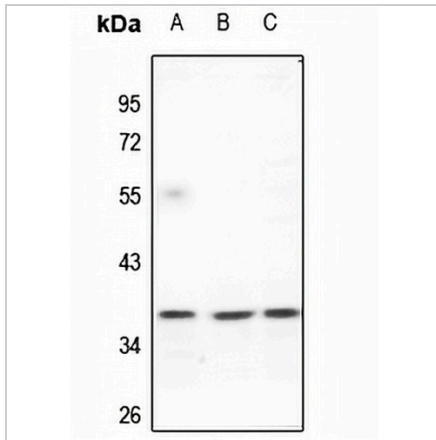
\*Clone Number, Reactivity, Source/Host and Clonality can be found in the product name and Key Features section above.

**DATASHEET**

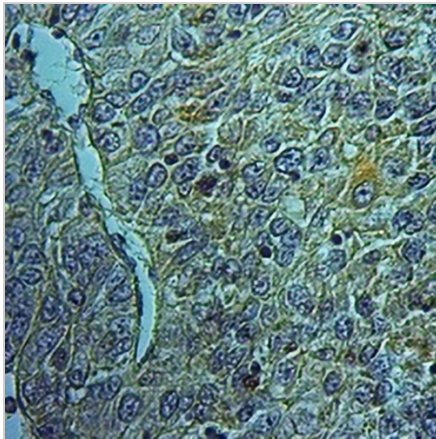
**FAIM2 Rabbit Polyclonal Antibody**

CAT. NO. APA08005

**DATA**



Western blot analysis of FAIM2 expression in BV2 (A), U87MG (B), HEK293T (C) whole cell lysates. (Predicted band size: 35 kDa; Observed band size: 36 kDa)



Immunohistochemical analysis of FAIM2 staining in human liver cancer formalin fixed paraffin embedded tissue section. The section was pre-treated using heat mediated antigen retrieval with sodium citrate buffer (pH 6.0). The section was then incubated with the antibody at room temperature and detected using an HRP conjugated compact polymer system. DAB was used as the chromogen. The section was then counterstained with haematoxylin and mounted with DPX.

**STORAGE**

Store at 4°C short term. For long term storage, store at -20°C, avoiding freeze/thaw cycles.

**NOTE**

For Research Use Only. Not for diagnostic, therapeutics, prophylactic or in vivo use.