

DATASHEET

CLCC1 Rabbit Polyclonal Antibody

CAT. NO. APA08012

KEY FEATURES

Target	CLCC1	Source / Host	Rabbit
Reactivity	Human	Clonality	Polyclonal
Applications	WB, IF/ICC	Conjugation	Unconjugated
Form / Buffer	Liquid in 0.42% Potassium phosphate, 0.87% Sodium chloride, pH 7.3, 30% glycerol, and 0.01% sodium azide.		Storage at -20°C

BACKGROUND

Anion-selective channel with Ca(2+)-dependent and voltage-independent gating. Permeable to small monovalent anions with selectivity for bromide > chloride > nitrate > fluoride . Operates in the endoplasmic reticulum (ER) membrane where it mediates chloride efflux to compensate for the loss of positive charges from the ER lumen upon Ca(2+) release. Contributes to the maintenance of ER Ca(2+) pools and activation of unfolded protein response to prevent accumulation of misfolded proteins in the ER lumen. Particularly involved in ER homeostasis mechanisms underlying motor neurons and retinal photoreceptors survival -dependent and voltage-independent gating. Permeable to small monovalent anions with selectivity for bromide > chloride > nitrate > fluoride .

APPLICATION

To ensure optimal assay performance, AREX recommends conducting reagent titration tailored to each testing system for optimal detection results.

WB	1:500 - 1:1000
IF/ICC	1:50 - 1:200

*Results are sample-specific. Please refer to your local assay conditions and test parameters for reference.

PRODUCT OVERVIEW

Description	Rabbit polyclonal antibody to CLCC1
Specificity	Recognizes endogenous levels of CLCC1 protein.
Antibody Type	Primary antibody
Immunogen	KLH-conjugated synthetic peptide encompassing a sequence within the center region of human CLCC1. The exact sequence is proprietary.
Purification	The antibody was purified by immunogen affinity chromatography.
Molecular Weight	Predicted: 62 kD; Observed: 62 kD
Form/Buffer	Liquid in 0.42% Potassium phosphate, 0.87% Sodium chloride, pH 7.3, 30% glycerol, and 0.01% sodium azide.
Alternative Names	KIAA0761; MCLC; Chloride channel CLIC-like protein 1; Mid-1-related chloride channel protein 1
Gene Symbol	CLCC1
Entrez Gene	23155(Human)
SwissProt	Q96S66(Human)

*AREX continuously optimizes our products. Webpage content may not reflect the latest updates. For inquiries, please contact info@arexbio.com or your local distributor.

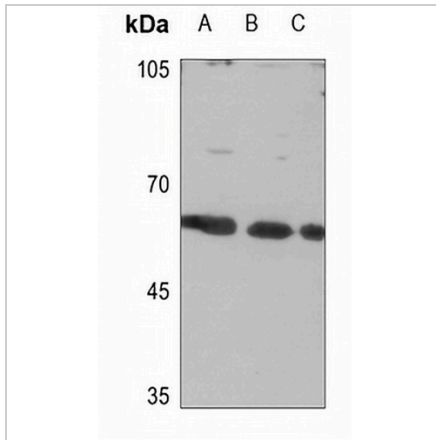
*Clone Number, Reactivity, Source/Host and Clonality can be found in the product name and Key Features section above.

DATASHEET

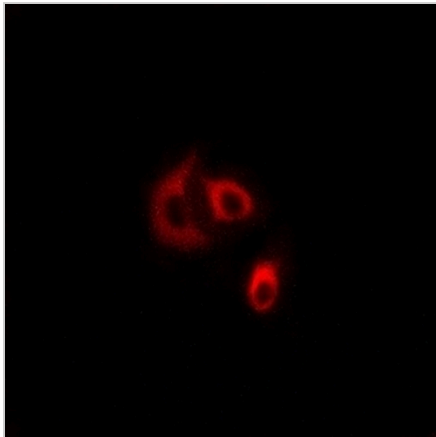
CLCC1 Rabbit Polyclonal Antibody

CAT. NO. APA08012

DATA



Western blot analysis of CLCC1 expression in HEK293T (A), HeLa (B), H446 (C) whole cell lysates. (Predicted band size: 62 kD; Observed band size: 62 kD)



Immunofluorescent analysis of CLCC1 staining in A549 cells. Formalin-fixed cells were permeabilized with 0.1% Triton X-100 in TBS for 5-10 minutes and blocked with 3% BSA-PBS for 30 minutes at room temperature. Cells were probed with the primary antibody in 3% BSA-PBS and incubated overnight at 4 °C in a humidified chamber. Cells were washed with PBST and incubated with a AREX® Fluor 594-conjugated secondary antibody (red) in PBS at room temperature in the dark.

STORAGE

Store at 4°C short term. For long term storage, store at -20°C, avoiding freeze/thaw cycles.

NOTE

For Research Use Only. Not for diagnostic, therapeutics, prophylactic or in vivo use.