

**DATASHEET**

**ABCB10 Rabbit Polyclonal Antibody**

CAT. NO. APA08022

**KEY FEATURES**

Target	ABCB10	Source / Host	Rabbit
Reactivity	Human, Mouse, Rat	Clonality	Polyclonal
Applications	WB, IHC, IF/ICC	Conjugation	Unconjugated
Form / Buffer	Liquid in 0.42% Potassium phosphate, 0.87% Sodium chloride, pH 7.3, 30% glycerol, and 0.01% sodium azide.		Storage at -20°C

**BACKGROUND**

ATP-dependent transporter located in the mitochondrial inner membrane that catalyzes the export of biliverdin from the mitochondrial matrix, and plays a crucial role in hemoglobin synthesis and antioxidative stress . Participates in the early step of the heme biosynthetic process during insertion of iron into protoporphyrin IX (PPIX) . Involved in the stabilization of the iron transporter mitoferrin-1/SLC25A37 . In addition may be involved in mitochondrial unfolded protein response (UPRmt) signaling pathway, although ABCB10 probably does not participate in peptide export from mitochondria .

**APPLICATION**

To ensure optimal assay performance, AREX recommends conducting reagent titration tailored to each testing system for optimal detection results.

WB	1:500 - 1:1000
IHC	1:100 - 1:200
IF/ICC	1:100 - 1:500

\*Results are sample-specific. Please refer to your local assay conditions and test parameters for reference.

**PRODUCT OVERVIEW**

Description	Rabbit polyclonal antibody to ABCB10
Specificity	Recognizes endogenous levels of ABCB10 protein.
Antibody Type	Primary antibody
Immunogen	KLH-conjugated synthetic peptide encompassing a sequence within the center region of human ABCB10. The exact sequence is proprietary.
Purification	The antibody was purified by immunogen affinity chromatography.
Molecular Weight	Predicted: 79 kD; Observed: 79 kD
Form/Buffer	Liquid in 0.42% Potassium phosphate, 0.87% Sodium chloride, pH 7.3, 30% glycerol, and 0.01% sodium azide.
Alternative Names	ATP-binding cassette sub-family B member 10 mitochondrial; ATP-binding cassette transporter 10; ABC transporter 10 protein; Mitochondrial ATP-binding cassette 2; M-ABC2
Gene Symbol	ABCB10
Entrez Gene	23456(Human); 56199(Mouse)
SwissProt	Q9NRK6(Human); Q9JI39(Mouse)

\*AREX continuously optimizes our products. Webpage content may not reflect the latest updates. For inquiries, please contact [info@arexbio.com](mailto:info@arexbio.com) or your local distributor.

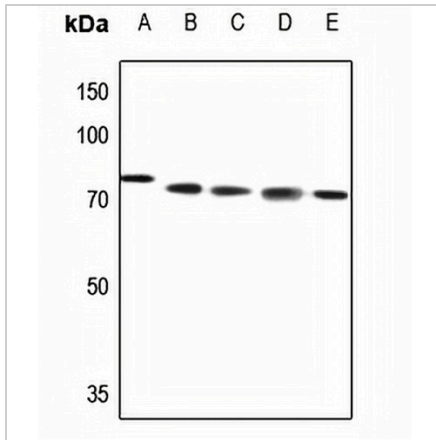
\*Clone Number, Reactivity, Source/Host and Clonality can be found in the product name and Key Features section above.

**DATASHEET**

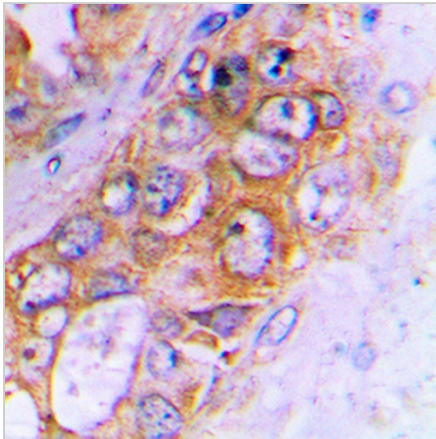
**ABCB10 Rabbit Polyclonal Antibody**

CAT. NO. APA08022

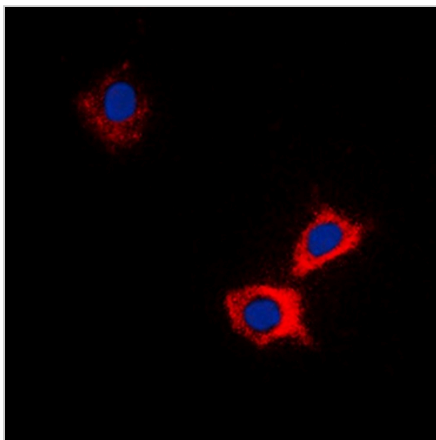
**DATA**



Western blot analysis of ABCB10 expression in HEK293T (A), mouse lung (B), mouse liver (C), rat lung (D), rat liver (E) whole cell lysates. (Predicted band size: 79 kD; Observed band size: 79 kD)



Immunohistochemical analysis of ABCB10 staining in human lung cancer formalin fixed paraffin embedded tissue section. The section was pre-treated using heat mediated antigen retrieval with sodium citrate buffer (pH 6.0). The section was then incubated with the antibody at room temperature and detected using an HRP conjugated compact polymer system. DAB was used as the chromogen. The section was then counterstained with haematoxylin and mounted with DPX.



Immunofluorescent analysis of ABCB10 staining in HeLa cells. Formalin-fixed cells were permeabilized with 0.1% Triton X-100 in TBS for 5-10 minutes and blocked with 3% BSA-PBS for 30 minutes at room temperature. Cells were probed with the primary antibody in 3% BSA-PBS and incubated overnight at 4 °C in a humidified chamber. Cells were washed with PBST and incubated with a DyLight 594-conjugated secondary antibody (red) in PBS at room temperature in the dark. DAPI was used to stain the cell nuclei (blue).

**STORAGE**

Store at 4°C short term. For long term storage, store at -20°C, avoiding freeze/thaw cycles.

**NOTE**

For Research Use Only. Not for diagnostic, therapeutics, prophylactic or in vivo use.