

DATASHEET

ABCA5 Rabbit Polyclonal Antibody

CAT. NO. APA08023

KEY FEATURES

Target	ABCA5	Source / Host	Rabbit
Reactivity	Human	Clonality	Polyclonal
Applications	WB, IHC	Conjugation	Unconjugated
Form / Buffer	Liquid in 0.42% Potassium phosphate, 0.87% Sodium chloride, pH 7.3, 30% glycerol, and 0.01% sodium azide.		Storage at-20°C

BACKGROUND

Cholesterol efflux transporter in macrophages that is responsible for APOAI/high-density lipoproteins (HDL) formation at the plasma membrane under high cholesterol levels and participates in reverse cholesterol transport formation at the plasma membrane under high cholesterol levels and participates in reverse cholesterol transport . May play a role in the processing of autolysosomes .

APPLICATION

To ensure optimal assay performance, AREX recommends conducting reagent titration tailored to each testing system for optimal detection results.

WB	1:500 - 1:1000
IHC	1:50 - 1:100

*Results are sample-specific. Please refer to your local assay conditions and test parameters for reference.

PRODUCT OVERVIEW

Description	Rabbit polyclonal antibody to ABCA5
Specificity	Recognizes endogenous levels of ABCA5 protein.
Antibody Type	Primary antibody
Immunogen	KLH-conjugated synthetic peptide encompassing a sequence within the C-term region of human ABCA5. The exact sequence is proprietary.
Purification	The antibody was purified by immunogen affinity chromatography.
Molecular Weight	Predicted: 186; Observed: 186; 104; 99 kD
Form/Buffer	Liquid in 0.42% Potassium phosphate, 0.87% Sodium chloride, pH 7.3, 30% glycerol, and 0.01% sodium azide.
Alternative Names	KIAA1888; ATP-binding cassette sub-family A member 5
Gene Symbol	ABCA5
Entrez Gene	23461(Human)
SwissProt	Q8WWZ7(Human)

*AREX continuously optimizes our products. Webpage content may not reflect the latest updates. For inquiries, please contact info@arex.bio or your local distributor.

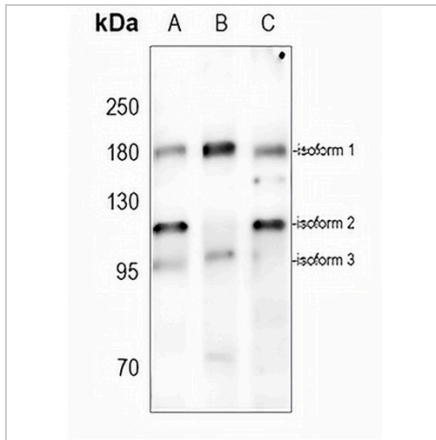
*Clone Number, Reactivity, Source/Host and Clonality can be found in the product name and Key Features section above.

DATASHEET

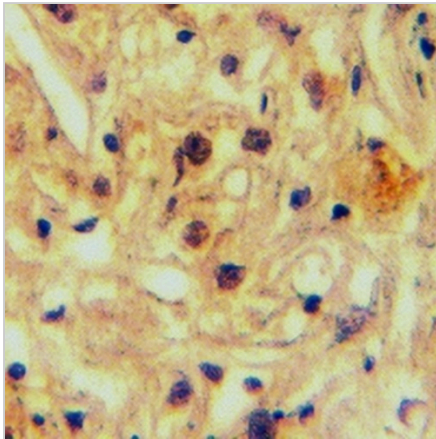
ABCA5 Rabbit Polyclonal Antibody

CAT. NO. APA08023

DATA



Western blot analysis of ABCA5 expression in MCF7 (A), A2780 (B), HepG2 (C) whole cell lysates. (Predicted band size: 186; 104; 99 kD; Observed band size: 186; 104; 99 kD)



Immunohistochemical analysis of ABCA5 staining in human colorectal cancer formalin fixed paraffin embedded tissue section. The section was pre-treated using heat mediated antigen retrieval with sodium citrate buffer (pH 6.0). The section was then incubated with the antibody at room temperature and detected using an HRP conjugated compact polymer system. DAB was used as the chromogen. The section was then counterstained with haematoxylin and mounted with DPX.

STORAGE

Store at 4°C short term. For long term storage, store at -20°C, avoiding freeze/thaw cycles.

NOTE

For Research Use Only. Not for diagnostic, therapeutics, prophylactic or in vivo use.