

DATASHEET

Caspase 14 p10 Rabbit Polyclonal Antibody

CAT. NO. APA08028

KEY FEATURES

Target	Caspase 14 p10	Source / Host	Rabbit
Reactivity	Human, Mouse, Rat	Clonality	Polyclonal
Applications	WB	Conjugation	Unconjugated
Form / Buffer	Liquid in 0.42% Potassium phosphate, 0.87% Sodium chloride, pH 7.3, 30% glycerol, and 0.01% sodium azide.		Storage at-20°C

BACKGROUND

Non-apoptotic caspase involved in epidermal differentiation. Is the predominant caspase in epidermal stratum corneum . Seems to play a role in keratinocyte differentiation and is required for cornification. Regulates maturation of the epidermis by proteolytically processing filaggrin . In vitro has a preference for the substrate [WY]-X-X-D motif and is active on the synthetic caspase substrate WEHD-ACF . Involved in processing of prosaposin in the epidermis . May be involved in retinal pigment epithelium cell barrier function . Involved in DNA degradation in differentiated keratinocytes probably by cleaving DFFA/ICAD leading to liberation of DFFB/CAD .

APPLICATION

To ensure optimal assay performance, AREX recommends conducting reagent titration tailored to each testing system for optimal detection results.

WB	1:500 - 1:1000
----	----------------

*Results are sample-specific. Please refer to your local assay conditions and test parameters for reference.

PRODUCT OVERVIEW

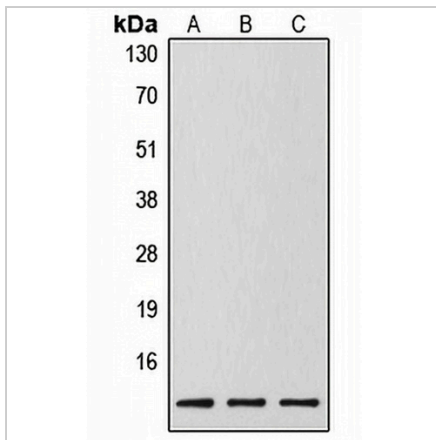
Description	Rabbit polyclonal antibody to Caspase 14 p10
Specificity	Recognizes endogenous levels of Caspase 14 p10 protein.
Antibody Type	Primary antibody
Immunogen	KLH-conjugated synthetic peptide encompassing a sequence within the center region of human Caspase 14. The exact sequence is proprietary.
Purification	The antibody was purified by immunogen affinity chromatography.
Molecular Weight	Predicted: 27 kD; Observed: 10 kD
Form/Buffer	Liquid in 0.42% Potassium phosphate, 0.87% Sodium chloride, pH 7.3, 30% glycerol, and 0.01% sodium azide.
Alternative Names	Caspase-14; CASP-14
Gene Symbol	CASP14
Entrez Gene	23581(Human); 12365(Mouse)
SwissProt	P31944(Human); O89094(Mouse)

*AREX continuously optimizes our products. Webpage content may not reflect the latest updates. For inquiries, please contact info@arexbio.com or your local distributor.

*Clone Number, Reactivity, Source/Host and Clonality can be found in the product name and Key Features section above.

DATASHEET**Caspase 14 p10 Rabbit Polyclonal Antibody**

CAT. NO. APA08028

DATA

Western blot analysis of Caspase 14 p10 expression in MCF7 (A), mouse spleen (B), rat liver (C) whole cell lysates. (Predicted band size: 27 kD; Observed band size: 10 kD)

STORAGE

Store at 4°C short term. For long term storage, store at -20°C, avoiding freeze/thaw cycles.

NOTE

For Research Use Only. Not for diagnostic, therapeutics, prophylactic or in vivo use.