

## DATASHEET

# PI-TP beta Rabbit Polyclonal Antibody

CAT. NO. APA08033

### KEY FEATURES

|               |   |               |                     |
|---------------|---|---------------|---------------------|
| Target        | PI-TP beta  | Source / Host | Rabbit              |
| Reactivity    | Human, Mouse, Rat   | Clonality     | Polyclonal          |
| Applications  | WB  | Conjugation   | Unconjugated        |
| Form / Buffer | Liquid in 0.42% Potassium phosphate, 0.87% Sodium chloride, pH 7.3, 30% glycerol, and 0.01% sodium azide. |               | Storage<br>at -20°C |

### BACKGROUND

Catalyzes the transfer of phosphatidylinositol and phosphatidylcholine between membranes . Also catalyzes the transfer of sphingomyelin . Required for COPI-mediated retrograde transport from the Golgi to the endoplasmic reticulum; phosphatidylinositol and phosphatidylcholine transfer activity is essential for this function .

### APPLICATION

To ensure optimal assay performance, AREX recommends conducting reagent titration tailored to each testing system for optimal detection results.

|    |                |
|----|----------------|
| WB | 1:500 - 1:1000 |
|----|----------------|

\*Results are sample-specific. Please refer to your local assay conditions and test parameters for reference.

### PRODUCT OVERVIEW

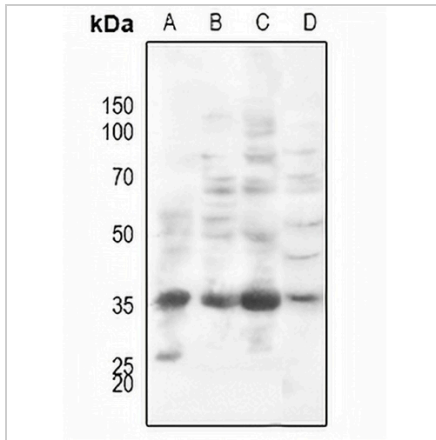
|                   |   |
|-------------------|---|
| Description       | Rabbit polyclonal antibody to PI-TP beta  |
| Specificity       | Recognizes endogenous levels of PI-TP beta protein.   |
| Antibody Type     | Primary antibody  |
| Immunogen         | KLH-conjugated synthetic peptide encompassing a sequence within the center region of human PI-TP beta. The exact sequence is proprietary. |
| Purification      | The antibody was purified by immunogen affinity chromatography.   |
| Molecular Weight  | Predicted: 31 kD; Observed: 32 kD   |
| Form/Buffer       | Liquid in 0.42% Potassium phosphate, 0.87% Sodium chloride, pH 7.3, 30% glycerol, and 0.01% sodium azide.                                 |
| Alternative Names | Phosphatidylinositol transfer protein beta isoform; PI-TP-beta; PtdIns transfer protein beta; PtdInsTP beta                               |
| Gene Symbol       | PITPNB  |
| Entrez Gene       | 23760(Human); 56305(Mouse); 114561(Rat)   |
| SwissProt         | P48739(Human); P53811(Mouse); P53812(Rat)   |

\*AREX continuously optimizes our products. Webpage content may not reflect the latest updates. For inquiries, please contact [info@arexbio.com](mailto:info@arexbio.com) or your local distributor.

\*Clone Number, Reactivity, Source/Host and Clonality can be found in the product name and Key Features section above.

**DATASHEET****PI-TP beta Rabbit Polyclonal Antibody**

CAT. NO. APA08033

**DATA**

Western blot analysis of PI-TP beta expression in HEK293T (A), HeLa (B), HepG2 (C), rat heart (D) whole cell lysates. (Predicted band size: 31 kD; Observed band size: 32 kD)

**STORAGE**

Store at 4°C short term. For long term storage, store at -20°C, avoiding freeze/thaw cycles.

**NOTE**

For Research Use Only. Not for diagnostic, therapeutics, prophylactic or in vivo use.