

DATASHEET

KIF4A Rabbit Polyclonal Antibody

CAT. NO. APA08035

KEY FEATURES

Target	KIF4A	Source / Host	Rabbit
Reactivity	Human, Mouse, Monkey	Clonality	Polyclonal
Applications	WB	Conjugation	Unconjugated
Form / Buffer	Liquid in 0.42% Potassium phosphate, 0.87% Sodium chloride, pH 7.3, 30% glycerol, and 0.01% sodium azide.		Storage at -20°C

BACKGROUND

Iron-sulfur (Fe-S) cluster binding motor protein that has a role in chromosome segregation during mitosis cluster binding motor protein that has a role in chromosome segregation during mitosis . Translocates PRC1 to the plus ends of interdigitating spindle microtubules during the metaphase to anaphase transition, an essential step for the formation of an organized central spindle midzone and midbody and for successful cytokinesis . May play a role in mitotic chromosomal positioning and bipolar spindle stabilization .

APPLICATION

To ensure optimal assay performance, AREX recommends conducting reagent titration tailored to each testing system for optimal detection results.

WB	1:500 - 1:1000
----	----------------

*Results are sample-specific. Please refer to your local assay conditions and test parameters for reference.

PRODUCT OVERVIEW

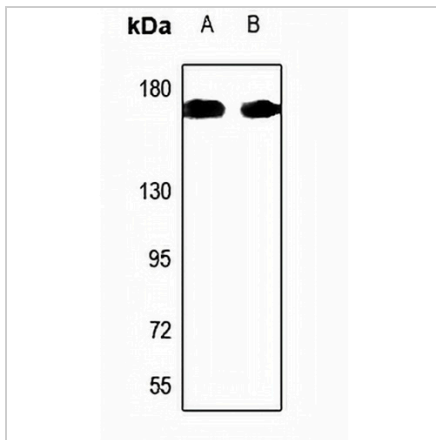
Description	Rabbit polyclonal antibody to KIF4A
Specificity	Recognizes endogenous levels of KIF4A protein.
Antibody Type	Primary antibody
Immunogen	KLH-conjugated synthetic peptide encompassing a sequence within the C-term region of human KIF4A. The exact sequence is proprietary.
Purification	The antibody was purified by immunogen affinity chromatography.
Molecular Weight	Predicted: 139 kD; Observed: 170 kD
Form/Buffer	Liquid in 0.42% Potassium phosphate, 0.87% Sodium chloride, pH 7.3, 30% glycerol, and 0.01% sodium azide.
Alternative Names	KIF4; Chromosome-associated kinesin KIF4A; Chromokinesin-A
Gene Symbol	KIF4A
Entrez Gene	24137(Human)
SwissProt	O95239(Human)

*AREX continuously optimizes our products. Webpage content may not reflect the latest updates. For inquiries, please contact info@arexbio.com or your local distributor.

*Clone Number, Reactivity, Source/Host and Clonality can be found in the product name and Key Features section above.

DATASHEET**KIF4A Rabbit Polyclonal Antibody**

CAT. NO. APA08035

DATA

Western blot analysis of KIF4A expression in HeLa (A), HGC27 (B) whole cell lysates. (Predicted band size: 139 kD; Observed band size: 170 kD)

STORAGE

Store at 4°C short term. For long term storage, store at -20°C, avoiding freeze/thaw cycles.

NOTE

For Research Use Only. Not for diagnostic, therapeutics, prophylactic or in vivo use.