

DATASHEET

NCKX2 Rabbit Polyclonal Antibody

CAT. NO. APA08037

KEY FEATURES

Target	NCKX2	Source / Host	Rabbit
Reactivity	Human, Mouse, Rat, Monkey	Clonality	Polyclonal
Applications	WB	Conjugation	Unconjugated
Form / Buffer	Liquid in 0.42% Potassium phosphate, 0.87% Sodium chloride, pH 7.3, 30% glycerol, and 0.01% sodium azide.		Storage at -20°C

BACKGROUND

Calcium, potassium:sodium antiporter that transports 1 Ca(2+) and 1 K(+) in exchange for 4 Na(+) and 1 K(+) in exchange for 4 Na(+). Required for learning and memory by regulating neuronal Ca(2+), which is essential for the development of synaptic plasticity.

APPLICATION

To ensure optimal assay performance, AREX recommends conducting reagent titration tailored to each testing system for optimal detection results.

WB	1:500 - 1:1000
----	----------------

*Results are sample-specific. Please refer to your local assay conditions and test parameters for reference.

PRODUCT OVERVIEW

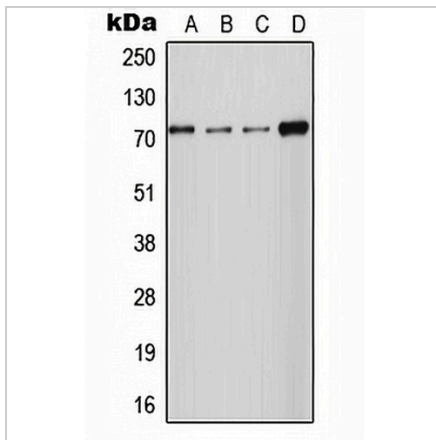
Description	Rabbit polyclonal antibody to NCKX2
Specificity	Recognizes endogenous levels of NCKX2 protein.
Antibody Type	Primary antibody
Immunogen	KLH-conjugated synthetic peptide encompassing a sequence within the center region of human NCKX2. The exact sequence is proprietary.
Purification	The antibody was purified by immunogen affinity chromatography.
Molecular Weight	Predicted: 73 kD; Observed: 73 kD
Form/Buffer	Liquid in 0.42% Potassium phosphate, 0.87% Sodium chloride, pH 7.3, 30% glycerol, and 0.01% sodium azide.
Alternative Names	NCKX2; Sodium/potassium/calcium exchanger 2; Na(+)/K(+)/Ca(2+)-exchange protein 2; Retinal cone Na-Ca+K exchanger; Solute carrier family 24 member 2
Gene Symbol	SLC24A2
Entrez Gene	25769(Human); 84550(Rat)
SwissProt	Q9UI40(Human); O54701(Rat)

*AREX continuously optimizes our products. Webpage content may not reflect the latest updates. For inquiries, please contact info@arexbio.com or your local distributor.

*Clone Number, Reactivity, Source/Host and Clonality can be found in the product name and Key Features section above.

DATASHEET**NCKX2 Rabbit Polyclonal Antibody**

CAT. NO. APA08037

DATA

Western blot analysis of NCKX2 expression in HT1080 (A), MCF7 (B), Raw264.7 (C), PC12 (D) whole cell lysates. (Predicted band size: 73 kD; Observed band size: 73 kD)

STORAGE

Store at 4°C short term. For long term storage, store at -20°C, avoiding freeze/thaw cycles.

NOTE

For Research Use Only. Not for diagnostic, therapeutics, prophylactic or in vivo use.