

**DATASHEET**

**Ataxin 10 Rabbit Polyclonal Antibody**

CAT. NO. APA08038

**KEY FEATURES**

Target	Ataxin 10	Source / Host	Rabbit
Reactivity	Human, Mouse, Rat, Monkey	Clonality	Polyclonal
Applications	WB, IHC	Conjugation	Unconjugated
Form / Buffer	Liquid in 0.42% Potassium phosphate, 0.87% Sodium chloride, pH 7.3, 30% glycerol, and 0.01% sodium azide.		Storage at-20°C

**BACKGROUND**

May play a role in the regulation of cytokinesis . May play a role in signaling by stimulating protein glycosylation. Induces neuritogenesis by activating the Ras-MAP kinase pathway and is necessary for the survival of cerebellar neurons . Does not appear to play a major role in ciliogenesis .

**APPLICATION**

To ensure optimal assay performance, AREX recommends conducting reagent titration tailored to each testing system for optimal detection results.

WB	1:500 - 1:1000
IHC	1:50 - 1:100

\*Results are sample-specific. Please refer to your local assay conditions and test parameters for reference.

**PRODUCT OVERVIEW**

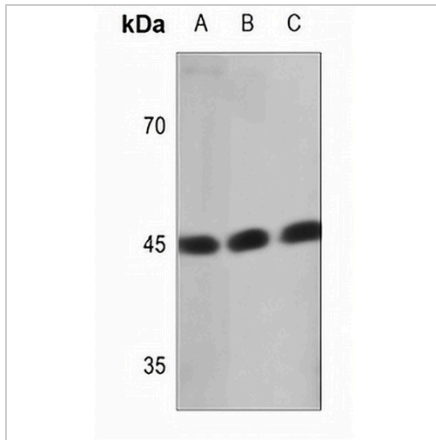
Description	Rabbit polyclonal antibody to Ataxin 10
Specificity	Recognizes endogenous levels of Ataxin 10 protein.
Antibody Type	Primary antibody
Immunogen	KLH-conjugated synthetic peptide encompassing a sequence within the N-term region of human Ataxin 10. The exact sequence is proprietary.
Purification	The antibody was purified by immunogen affinity chromatography.
Molecular Weight	Predicted: 53 kD; Observed: 45 kD
Form/Buffer	Liquid in 0.42% Potassium phosphate, 0.87% Sodium chloride, pH 7.3, 30% glycerol, and 0.01% sodium azide.
Alternative Names	SCA10; Ataxin-10; Brain protein E46 homolog; Spinocerebellar ataxia type 10 protein
Gene Symbol	ATXN10
Entrez Gene	25814(Human); 54138(Mouse); 170821(Rat)
SwissProt	Q9UBB4(Human); P28658(Mouse); Q9ER24(Rat)

\*AREX continuously optimizes our products. Webpage content may not reflect the latest updates. For inquiries, please contact [info@arexbio.com](mailto:info@arexbio.com) or your local distributor.

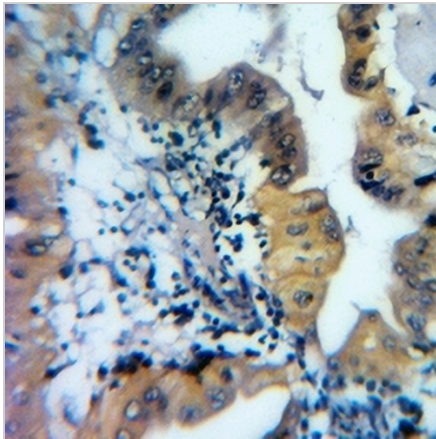
\*Clone Number, Reactivity, Source/Host and Clonality can be found in the product name and Key Features section above.

**DATASHEET****Ataxin 10 Rabbit Polyclonal Antibody**

CAT. NO. APA08038

**DATA**

Western blot analysis of Ataxin 10 expression in HeLa (A), mouse testis (B), rat testis (C) whole cell lysates. (Predicted band size: 53 kD; Observed band size: 45 kD)



Immunohistochemical analysis of Ataxin 10 staining in human colorectal cancer formalin fixed paraffin embedded tissue section. The section was pre-treated using heat mediated antigen retrieval with sodium citrate buffer (pH 6.0). The section was then incubated with the antibody at room temperature and detected using an HRP conjugated compact polymer system. DAB was used as the chromogen. The section was then counterstained with haematoxylin and mounted with DPX.

**STORAGE**

Store at 4°C short term. For long term storage, store at -20°C, avoiding freeze/thaw cycles.

**NOTE**

For Research Use Only. Not for diagnostic, therapeutics, prophylactic or in vivo use.