

DATASHEET

POLR1A Rabbit Polyclonal Antibody

CAT. NO. APA08042

KEY FEATURES

| | | | |
|---------------|---|---------------|---------------------|
| Target | POLR1A | Source / Host | Rabbit |
| Reactivity | Human, Mouse, Rat, Monkey | Clonality | Polyclonal |
| Applications | WB | Conjugation | Unconjugated |
| Form / Buffer | Liquid in 0.42% Potassium phosphate, 0.87% Sodium chloride, pH 7.3, 30% glycerol, and 0.01% sodium azide. | | Storage at -20°C |

BACKGROUND

Catalytic core component of RNA polymerase I (Pol I), a DNA-dependent RNA polymerase which synthesizes ribosomal RNA precursors using the four ribonucleoside triphosphates as substrates. Transcribes 47S pre-rRNAs from multicopy rRNA gene clusters, giving rise to 5.8S, 18S and 28S ribosomal RNAs, a DNA-dependent RNA polymerase which synthesizes ribosomal RNA precursors using the four ribonucleoside triphosphates as substrates. Transcribes 47S pre-rRNAs from multicopy rRNA gene clusters, giving rise to 5.8S, 18S and 28S ribosomal RNAs. Pol I-mediated transcription cycle proceeds through transcription initiation, transcription elongation and transcription termination stages.

APPLICATION

To ensure optimal assay performance, AREX recommends conducting reagent titration tailored to each testing system for optimal detection results.

| | |
|----|----------------|
| WB | 1:500 - 1:1000 |
|----|----------------|

*Results are sample-specific. Please refer to your local assay conditions and test parameters for reference.

PRODUCT OVERVIEW

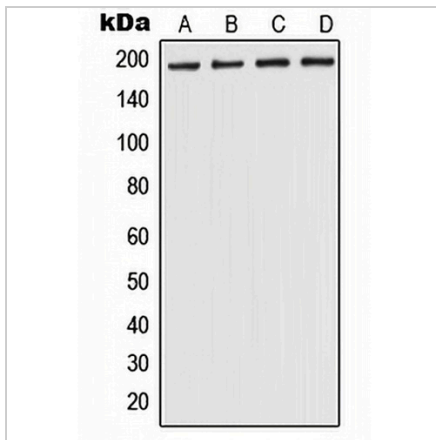
| | |
|-------------------|---|
| Description | Rabbit polyclonal antibody to POLR1A |
| Specificity | Recognizes endogenous levels of POLR1A protein. |
| Antibody Type | Primary antibody |
| Immunogen | KLH-conjugated synthetic peptide encompassing a sequence within the center region of human POLR1A. The exact sequence is proprietary. |
| Purification | The antibody was purified by immunogen affinity chromatography. |
| Molecular Weight | Predicted: 194 kD; Observed: 194 kD |
| Form/Buffer | Liquid in 0.42% Potassium phosphate, 0.87% Sodium chloride, pH 7.3, 30% glycerol, and 0.01% sodium azide. |
| Alternative Names | DNA-directed RNA polymerase I subunit RPA1; RNA polymerase I subunit A1; A190; DNA-directed RNA polymerase I largest subunit; DNA-directed RNA polymerase I subunit A; RNA polymerase I 194 kDa subunit; RPA194 |
| Gene Symbol | POLR1A |
| Entrez Gene | 25885(Human); 20019(Mouse); 83581(Rat) |
| SwissProt | O95602(Human); O35134(Mouse); O54889(Rat) |

*AREX continuously optimizes our products. Webpage content may not reflect the latest updates. For inquiries, please contact info@arexbio.com or your local distributor.

*Clone Number, Reactivity, Source/Host and Clonality can be found in the product name and Key Features section above.

DATASHEET**POLR1A Rabbit Polyclonal Antibody**

CAT. NO. APA08042

DATA

Western blot analysis of POLR1A expression in A375 (A), HEK293T (B), NIH3T3 (C), H9C2 (D) whole cell lysates. (Predicted band size: 194 kD; Observed band size: 194 kD)

STORAGE

Store at 4°C short term. For long term storage, store at -20°C, avoiding freeze/thaw cycles.

NOTE

For Research Use Only. Not for diagnostic, therapeutics, prophylactic or in vivo use.