

DATASHEET

Opticin Rabbit Polyclonal Antibody

CAT. NO. APA08048

KEY FEATURES

Target	Opticin	Source / Host	Rabbit
Reactivity	Human, Mouse, Rat, Pig	Clonality	Polyclonal
Applications	WB	Conjugation	Unconjugated
Form / Buffer	Liquid in 0.42% Potassium phosphate, 0.87% Sodium chloride, pH 7.3, 30% glycerol, and 0.01% sodium azide.		Storage at-20°C

BACKGROUND

Inhibits angiogenesis in the vitreous humor of the eye, and therefore represses neovascularization . Binds collagen fibrils . May be involved in collagen fiber organization via regulation of other members of the small leucine-rich repeat proteoglycan superfamily .

APPLICATION

To ensure optimal assay performance, AREX recommends conducting reagent titration tailored to each testing system for optimal detection results.

WB	1:500 - 1:1000
----	----------------

*Results are sample-specific. Please refer to your local assay conditions and test parameters for reference.

PRODUCT OVERVIEW

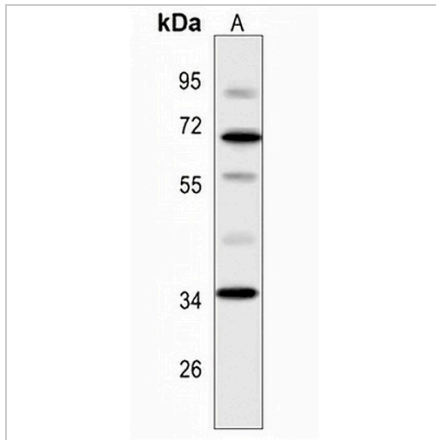
Description	Rabbit polyclonal antibody to Opticin
Specificity	Recognizes endogenous levels of Opticin protein.
Antibody Type	Primary antibody
Immunogen	KLH-conjugated synthetic peptide encompassing a sequence within the C-term region of human Opticin. The exact sequence is proprietary.
Purification	The antibody was purified by immunogen affinity chromatography.
Molecular Weight	Predicted: 37 kD; Observed: 35 kD
Form/Buffer	Liquid in 0.42% Potassium phosphate, 0.87% Sodium chloride, pH 7.3, 30% glycerol, and 0.01% sodium azide.
Alternative Names	OPT; Opticin; Oculoglycan
Gene Symbol	OPTC
Entrez Gene	26254(Human); 269120(Mouse)
SwissProt	Q9UBM4(Human); Q920A0(Mouse)

*AREX continuously optimizes our products. Webpage content may not reflect the latest updates. For inquiries, please contact info@arexbio.com or your local distributor.

*Clone Number, Reactivity, Source/Host and Clonality can be found in the product name and Key Features section above.

DATASHEET**Opticin Rabbit Polyclonal Antibody**

CAT. NO. APA08048

DATA

Western blot analysis of Opticin expression in HT1080 (A) whole cell lysates. (Predicted band size: 37 kD; Observed band size: 35 kD)

STORAGE

Store at 4°C short term. For long term storage, store at -20°C, avoiding freeze/thaw cycles.

NOTE

For Research Use Only. Not for diagnostic, therapeutics, prophylactic or in vivo use.