

DATASHEET

CBP86 Rabbit Polyclonal Antibody

CAT. NO. APA08049

KEY FEATURES

Target	CBP86	Source / Host	Rabbit
Reactivity	Human, Mouse, Rat	Clonality	Polyclonal
Applications	WB	Conjugation	Unconjugated
Form / Buffer	Liquid in 0.42% Potassium phosphate, 0.87% Sodium chloride, pH 7.3, 30% glycerol, and 0.01% sodium azide.		Storage at-20°C

BACKGROUND

May function as a regulator of both motility- and head-associated functions such as capacitation and the acrosome reaction. Isoform 1 binds calcium in vitro. Isoform 2 and isoform 6 probably bind calcium. Isoform 3 and isoform 5 do not bind calcium in vitro. Isoform 4 probably does not bind calcium.

APPLICATION

To ensure optimal assay performance, AREX recommends conducting reagent titration tailored to each testing system for optimal detection results.

WB	1:500 - 1:1000
----	----------------

*Results are sample-specific. Please refer to your local assay conditions and test parameters for reference.

PRODUCT OVERVIEW

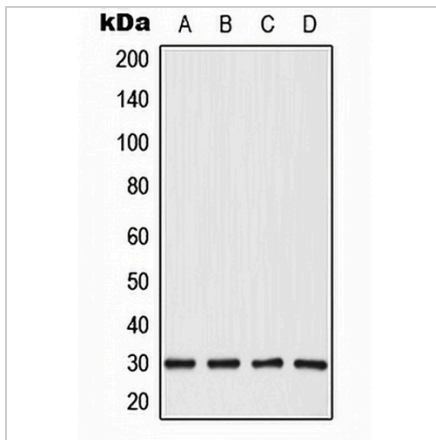
Description	Rabbit polyclonal antibody to CBP86
Specificity	Recognizes endogenous levels of CBP86 protein.
Antibody Type	Primary antibody
Immunogen	KLH-conjugated synthetic peptide encompassing a sequence within the center region of human CBP86. The exact sequence is proprietary.
Purification	The antibody was purified by immunogen affinity chromatography.
Molecular Weight	Predicted: 52 kD; Observed: 30 kD
Form/Buffer	Liquid in 0.42% Potassium phosphate, 0.87% Sodium chloride, pH 7.3, 30% glycerol, and 0.01% sodium azide.
Alternative Names	CBP86; FSP2; Calcium-binding tyrosine phosphorylation-regulated protein; Calcium-binding protein 86; Cancer/testis antigen 88; CT88; Fibrousheathin II; Fibrousheathin-2; FSP-2; Testis-specific calcium-binding protein CBP86
Gene Symbol	CABYR
Entrez Gene	26256(Human); 71132(Mouse)
SwissProt	O75952(Human); Q9D424(Mouse)

*AREX continuously optimizes our products. Webpage content may not reflect the latest updates. For inquiries, please contact info@arexbio.com or your local distributor.

*Clone Number, Reactivity, Source/Host and Clonality can be found in the product name and Key Features section above.

DATASHEET**CBP86 Rabbit Polyclonal Antibody**

CAT. NO. APA08049

DATA

Western blot analysis of CBP86 expression in HepG2 (A), HeLa (B), SP2/0 (C), PC12 (D) whole cell lysates. (Predicted band size: 52 kD; Observed band size: 30 kD)

STORAGE

Store at 4°C short term. For long term storage, store at -20°C, avoiding freeze/thaw cycles.

NOTE

For Research Use Only. Not for diagnostic, therapeutics, prophylactic or in vivo use.