

DATASHEET

IL-37 Rabbit Polyclonal Antibody

CAT. NO. APA08062

KEY FEATURES

Target	IL-37	Source / Host	Rabbit
Reactivity	Human, Mouse, Rat	Clonality	Polyclonal
Applications	WB	Conjugation	Unconjugated
Form / Buffer	Liquid in 0.42% Potassium phosphate, 0.87% Sodium chloride, pH 7.3, 30% glycerol, and 0.01% sodium azide.		Storage at-20°C

BACKGROUND

Immune regulatory cytokine that acts as a suppressor of innate inflammatory and immune responses involved in curbing excessive inflammation. Signaling can occur via two mechanisms, intracellularly through nuclear translocation with SMAD3 and extracellularly after secretion and binding to its receptor composed of IL18R1 and IL18RAP. Suppresses, or reduces, pro-inflammatory cytokine production, including IL1A and IL6, as well as CCL12, CSF1, CSF2, CXCL13, IL1B, IL23A and IL1RN, but spares anti-inflammatory cytokines. Inhibits dendritic cell activation.

APPLICATION

To ensure optimal assay performance, AREX recommends conducting reagent titration tailored to each testing system for optimal detection results.

WB	1:500 - 1:1000
----	----------------

*Results are sample-specific. Please refer to your local assay conditions and test parameters for reference.

PRODUCT OVERVIEW

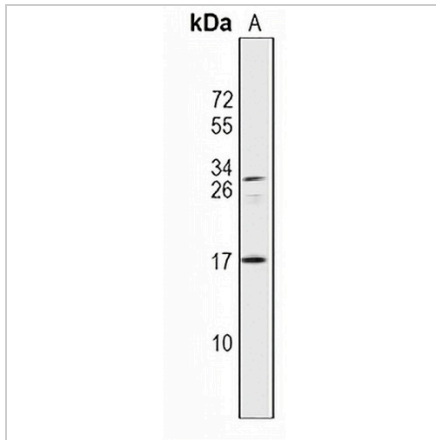
Description	Rabbit polyclonal antibody to IL-37
Specificity	Recognizes endogenous levels of IL-37 protein.
Antibody Type	Primary antibody
Immunogen	KLH-conjugated synthetic peptide encompassing a sequence within the center region of human IL-37. The exact sequence is proprietary.
Purification	The antibody was purified by immunogen affinity chromatography.
Molecular Weight	Predicted: 24 kD; Observed: 17 kD
Form/Buffer	Liquid in 0.42% Potassium phosphate, 0.87% Sodium chloride, pH 7.3, 30% glycerol, and 0.01% sodium azide.
Alternative Names	FIL1Z; IL1F7; IL1H4; IL1RP1; Interleukin-37; FIL1 zeta; IL-1X; Interleukin-1 family member 7; IL-1F7; Interleukin-1 homolog 4; IL-1H; IL-1H4; Interleukin-1 zeta; IL-1 zeta; Interleukin-1-related protein; IL-1RP1; Interleukin-23; IL-37
Gene Symbol	IL37
Entrez Gene	27178(Human)
SwissProt	Q9NZH6(Human)

*AREX continuously optimizes our products. Webpage content may not reflect the latest updates. For inquiries, please contact info@arexbio.com or your local distributor.

*Clone Number, Reactivity, Source/Host and Clonality can be found in the product name and Key Features section above.

DATASHEET**IL-37 Rabbit Polyclonal Antibody**

CAT. NO. APA08062

DATA

Western blot analysis of IL-37 expression in human brain (A) whole cell lysates. (Predicted band size: 24 kD; Observed band size: 17 kD)

STORAGE

Store at 4°C short term. For long term storage, store at -20°C, avoiding freeze/thaw cycles.

NOTE

For Research Use Only. Not for diagnostic, therapeutics, prophylactic or in vivo use.