

DATASHEET

GPR171 Rabbit Polyclonal Antibody

CAT. NO. APA08081

KEY FEATURES

Target	GPR171	Source / Host	Rabbit
Reactivity	Human, Mouse, Rat, Bovine	Clonality	Polyclonal
Applications	WB, IF/ICC	Conjugation	Unconjugated
Form / Buffer	Liquid in 0.42% Potassium phosphate, 0.87% Sodium chloride, pH 7.3, 30% glycerol, and 0.01% sodium azide.		Storage at -20°C

BACKGROUND

G-protein coupled receptor for Big LEN, a 16-amino acid neuropeptide produced from the precursor protein, proSAAS (encoded by PCSK1N). Acts through a G(i)-alpha-mediated pathway in response to Big LEN. Big LEN-GPR171 system plays an important role in regulating feeding and metabolism. Also plays a role in modulating fear and anxiety-like behaviors in the basolateral amygdala. Big LEN-GPR171 modulates the mu-type opioid receptor signaling and antinociception . Acts as a negative regulator T cell function . Acts through a G(i)-alpha-mediated pathway in response to Big LEN. Big LEN-GPR171 system plays an important role in regulating feeding and metabolism. Also plays a role in modulating fear and anxiety-like behaviors in the basolateral amygdala.

APPLICATION

To ensure optimal assay performance, AREX recommends conducting reagent titration tailored to each testing system for optimal detection results.

WB	1:500 - 1:1000
IF/ICC	1:50 - 1:200

*Results are sample-specific. Please refer to your local assay conditions and test parameters for reference.

PRODUCT OVERVIEW

Description	Rabbit polyclonal antibody to GPR171
Specificity	Recognizes endogenous levels of GPR171 protein.
Antibody Type	Primary antibody
Immunogen	KLH-conjugated synthetic peptide encompassing a sequence within the center region of human GPR171. The exact sequence is proprietary.
Purification	The antibody was purified by immunogen affinity chromatography.
Molecular Weight	Predicted: 36 kD; Observed: 36 kD
Form/Buffer	Liquid in 0.42% Potassium phosphate, 0.87% Sodium chloride, pH 7.3, 30% glycerol, and 0.01% sodium azide.
Alternative Names	H963; Probable G-protein coupled receptor 171; G-protein coupled receptor H963
Gene Symbol	GPR171
Entrez Gene	29909(Human); 229323(Mouse)
SwissProt	O14626(Human); Q8BG55(Mouse)

*AREX continuously optimizes our products. Webpage content may not reflect the latest updates. For inquiries, please contact info@arexbio.com or your local distributor.

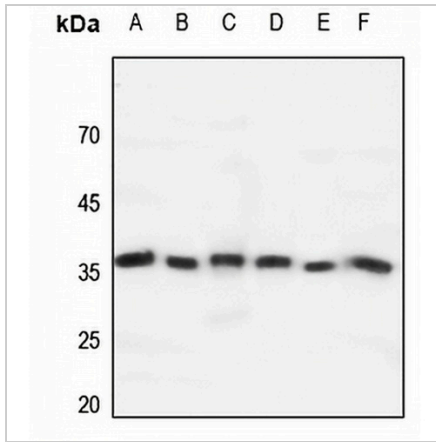
*Clone Number, Reactivity, Source/Host and Clonality can be found in the product name and Key Features section above.

DATASHEET

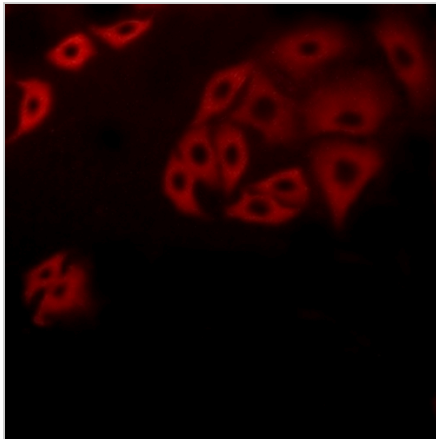
GPR171 Rabbit Polyclonal Antibody

CAT. NO. APA08081

DATA



Western blot analysis of GPR171 expression in HEK293T (A), HeLa (B), H460 (C), mouse kidney (D), rat kidney (E), mouse lung (F) whole cell lysates. (Predicted band size: 36 kD; Observed band size: 36 kD)



Immunofluorescent analysis of GPR171 staining in A549 cells. Formalin-fixed cells were permeabilized with 0.1% Triton X-100 in TBS for 5-10 minutes and blocked with 3% BSA-PBS for 30 minutes at room temperature. Cells were probed with the primary antibody in 3% BSA-PBS and incubated overnight at 4 °C in a humidified chamber. Cells were washed with PBST and incubated with a AREX® Fluor 594-conjugated secondary antibody (red) in PBS at room temperature in the dark.

STORAGE

Store at 4°C short term. For long term storage, store at -20°C, avoiding freeze/thaw cycles.

NOTE

For Research Use Only. Not for diagnostic, therapeutics, prophylactic or in vivo use.