

DATASHEET

RhoD Rabbit Polyclonal Antibody

CAT. NO. APA08085

KEY FEATURES

Target	RhoD	Source / Host	Rabbit
Reactivity	Human, Mouse, Rat, Monkey	Clonality	Polyclonal
Applications	WB	Conjugation	Unconjugated
Form / Buffer	Liquid in 0.42% Potassium phosphate, 0.87% Sodium chloride, pH 7.3, 30% glycerol, and 0.01% sodium azide.		Storage at-20°C

BACKGROUND

Involved in endosome dynamics. May coordinate membrane transport with the function of the cytoskeleton. Involved in the internalization and trafficking of activated tyrosine kinase receptors such as PDGFRB. Participates in the reorganization of actin cytoskeleton; the function seems to involve WHAMM and includes regulation of filopodia formation and actin filament bundling. Can modulate the effect of DAPK3 in reorganization of actin cytoskeleton and focal adhesion dissolution.

APPLICATION

To ensure optimal assay performance, AREX recommends conducting reagent titration tailored to each testing system for optimal detection results.

WB	1:500 - 1:1000
----	----------------

*Results are sample-specific. Please refer to your local assay conditions and test parameters for reference.

PRODUCT OVERVIEW

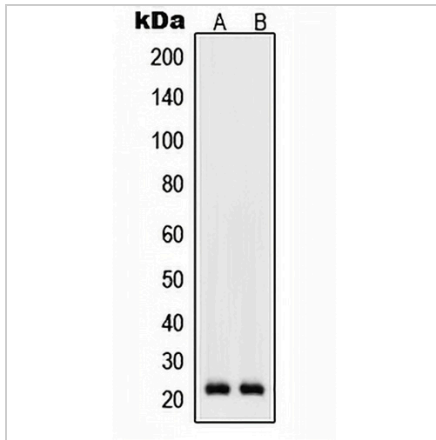
Description	Rabbit polyclonal antibody to RhoD
Specificity	Recognizes endogenous levels of RhoD protein.
Antibody Type	Primary antibody
Immunogen	KLH-conjugated synthetic peptide encompassing a sequence within the center region of human RhoD. The exact sequence is proprietary.
Purification	The antibody was purified by immunogen affinity chromatography.
Molecular Weight	Predicted: 23 kD; Observed: 23 kD
Form/Buffer	Liquid in 0.42% Potassium phosphate, 0.87% Sodium chloride, pH 7.3, 30% glycerol, and 0.01% sodium azide.
Alternative Names	ARHD; Rho-related GTP-binding protein RhoD; Rho-related protein HP1; RhoHP1
Gene Symbol	RHOD
Entrez Gene	29984(Human); 11854(Mouse)
SwissProt	O00212(Human); P97348(Mouse)

*AREX continuously optimizes our products. Webpage content may not reflect the latest updates. For inquiries, please contact info@arexbio.com or your local distributor.

*Clone Number, Reactivity, Source/Host and Clonality can be found in the product name and Key Features section above.

DATASHEET**RhoD Rabbit Polyclonal Antibody**

CAT. NO. APA08085

DATA

Western blot analysis of RhoD expression in K562 (A), Raw264.7 (B) whole cell lysates.
(Predicted band size: 23 kD; Observed band size: 23 kD)

STORAGE

Store at 4°C short term. For long term storage, store at -20°C, avoiding freeze/thaw cycles.

NOTE

For Research Use Only. Not for diagnostic, therapeutics, prophylactic or in vivo use.