

**DATASHEET**

**Cytochrome P450 39A1 Rabbit Polyclonal Antibody**

CAT. NO. APA08097

**KEY FEATURES**

Target	Cytochrome P450 39A1	Source / Host	Rabbit
Reactivity	Human, Mouse, Rat, Monkey, Pig	Clonality	Polyclonal
Applications	WB, IHC, IF/ICC	Conjugation	Unconjugated
Form / Buffer	Liquid in 0.42% Potassium phosphate, 0.87% Sodium chloride, pH 7.3, 30% glycerol, and 0.01% sodium azide.	Storage	at-20°C

**BACKGROUND**

A cytochrome P450 monooxygenase involved in neural cholesterol clearance through bile acid synthesis . Catalyzes 7-alpha hydroxylation of (24S)-hydroxycholesterol, a neural oxysterol that is metabolized to bile acids in the liver . Mechanistically, uses molecular oxygen inserting one oxygen atom into a substrate, and reducing the second into a water molecule, with two electrons provided by NADPH via cytochrome P450 reductase (CPR; NADPH-ferrihemoprotein reductase) .

**APPLICATION**

To ensure optimal assay performance, AREX recommends conducting reagent titration tailored to each testing system for optimal detection results.

WB	1:500 - 1:1000
IHC	1:50 - 1:100
IF/ICC	1:50 - 1:200

\*Results are sample-specific. Please refer to your local assay conditions and test parameters for reference.

**PRODUCT OVERVIEW**

Description	Rabbit polyclonal antibody to Cytochrome P450 39A1
Specificity	Recognizes endogenous levels of Cytochrome P450 39A1 protein.
Antibody Type	Primary antibody
Immunogen	KLH-conjugated synthetic peptide encompassing a sequence within the C-term region of human Cytochrome P450 39A1. The exact sequence is proprietary.
Purification	The antibody was purified by immunogen affinity chromatography.
Molecular Weight	Predicted: 54 kD; Observed: 54 kD
Form/Buffer	Liquid in 0.42% Potassium phosphate, 0.87% Sodium chloride, pH 7.3, 30% glycerol, and 0.01% sodium azide.
Alternative Names	24-hydroxycholesterol 7-alpha-hydroxylase; Cytochrome P450 39A1; hCYP39A1; Oxysterol 7-alpha-hydroxylase
Gene Symbol	CYP39A1
Entrez Gene	51302(Human); 56050(Mouse)
SwissProt	Q9NYL5(Human); Q9JKJ9(Mouse)

\*AREX continuously optimizes our products. Webpage content may not reflect the latest updates. For inquiries, please contact [info@arexbio.com](mailto:info@arexbio.com) or your local distributor.

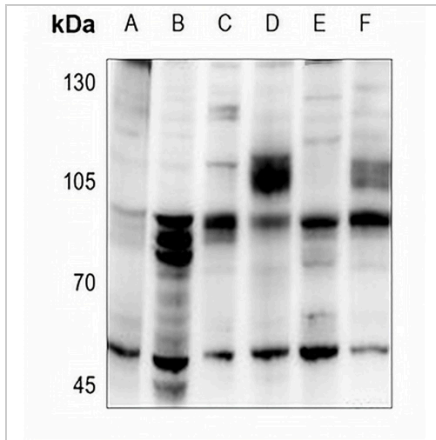
\*Clone Number, Reactivity, Source/Host and Clonality can be found in the product name and Key Features section above.

**DATASHEET**

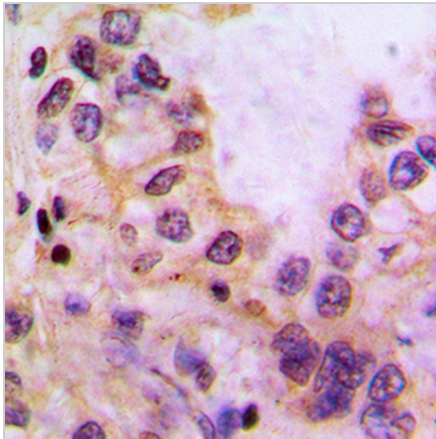
**Cytochrome P450 39A1 Rabbit Polyclonal Antibody**

CAT. NO. APA08097

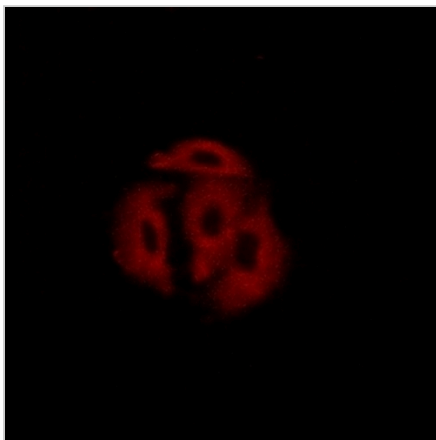
**DATA**



Western blot analysis of Cytochrome P450 39A1 expression in C6 (A), AML12 (B), PC3 (C), Panc1 (D), HEK293T (E), HepG2 (F) whole cell lysates. (Predicted band size: 54 kD; Observed band size: 54 kD)



Immunohistochemical analysis of Cytochrome P450 39A1 staining in human liver cancer formalin fixed paraffin embedded tissue section. The section was pre-treated using heat mediated antigen retrieval with sodium citrate buffer (pH 6.0). The section was then incubated with the antibody at room temperature and detected using an HRP conjugated compact polymer system. DAB was used as the chromogen. The section was then counterstained with haematoxylin and mounted with DPX.



Immunofluorescent analysis of Cytochrome P450 39A1 staining in A549 cells. Formalin-fixed cells were permeabilized with 0.1% Triton X-100 in TBS for 5-10 minutes and blocked with 3% BSA-PBS for 30 minutes at room temperature. Cells were probed with the primary antibody in 3% BSA-PBS and incubated overnight at 4 °C in a humidified chamber. Cells were washed with PBST and incubated with a AREX® Fluor 594-conjugated secondary antibody (red) in PBS at room temperature in the dark.

**STORAGE**

Store at 4°C short term. For long term storage, store at -20°C, avoiding freeze/thaw cycles.

**NOTE**

For Research Use Only. Not for diagnostic, therapeutics, prophylactic or in vivo use.