

**DATASHEET**

**CDC40 Rabbit Polyclonal Antibody**

CAT. NO. APA08100

**KEY FEATURES**

Target	CDC40	Source / Host	Rabbit
Reactivity	Human, Mouse, Rat, Bovine	Clonality	Polyclonal
Applications	WB, IHC	Conjugation	Unconjugated
Form / Buffer	Liquid in 0.42% Potassium phosphate, 0.87% Sodium chloride, pH 7.3, 30% glycerol, and 0.01% sodium azide.		Storage at -20°C

**BACKGROUND**

Required for pre-mRNA splicing as component of the activated spliceosome . Plays an important role in embryonic brain development; this function does not require proline isomerization .

**APPLICATION**

To ensure optimal assay performance, AREX recommends conducting reagent titration tailored to each testing system for optimal detection results.

WB	1:500 - 1:1000
IHC	1:50 - 1:100

\*Results are sample-specific. Please refer to your local assay conditions and test parameters for reference.

**PRODUCT OVERVIEW**

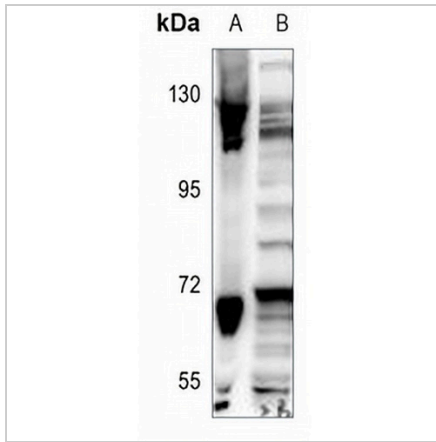
Description	Rabbit polyclonal antibody to CDC40
Specificity	Recognizes endogenous levels of CDC40 protein.
Antibody Type	Primary antibody
Immunogen	KLH-conjugated synthetic peptide encompassing a sequence within the center region of human CDC40. The exact sequence is proprietary.
Purification	The antibody was purified by immunogen affinity chromatography.
Molecular Weight	Predicted: 65 kD; Observed: 70 kD
Form/Buffer	Liquid in 0.42% Potassium phosphate, 0.87% Sodium chloride, pH 7.3, 30% glycerol, and 0.01% sodium azide.
Alternative Names	EHB3; PRP17; PRPF17; Pre-mRNA-processing factor 17; Cell division cycle 40 homolog; EH-binding protein 3; Ehb3; PRP17 homolog; hPRP17
Gene Symbol	CDC40
Entrez Gene	51362(Human); 71713(Mouse)
SwissProt	O60508(Human); Q9DC48(Mouse)

\*AREX continuously optimizes our products. Webpage content may not reflect the latest updates. For inquiries, please contact [info@arexbio.com](mailto:info@arexbio.com) or your local distributor.

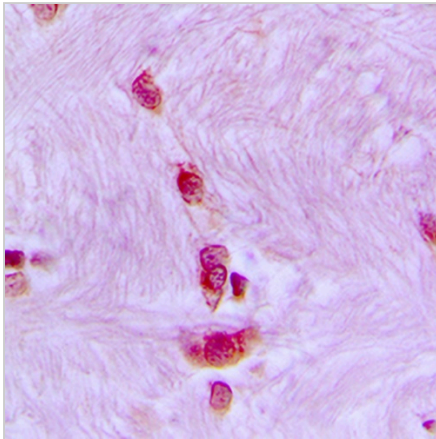
\*Clone Number, Reactivity, Source/Host and Clonality can be found in the product name and Key Features section above.

**DATASHEET****CDC40 Rabbit Polyclonal Antibody**

CAT. NO. APA08100

**DATA**

Western blot analysis of CDC40 expression in MCF7 (A), HEK293T (B) whole cell lysates. (Predicted band size: 65 kD; Observed band size: 70 kD)



Immunohistochemical analysis of CDC40 staining in human brain formalin fixed paraffin embedded tissue section. The section was pre-treated using heat mediated antigen retrieval with sodium citrate buffer (pH 6.0). The section was then incubated with the antibody at room temperature and detected using an HRP conjugated compact polymer system. DAB was used as the chromogen. The section was then counterstained with haematoxylin and mounted with DPX.

**STORAGE**

Store at 4°C short term. For long term storage, store at -20°C, avoiding freeze/thaw cycles.

**NOTE**

For Research Use Only. Not for diagnostic, therapeutics, prophylactic or in vivo use.