

DATASHEET

MED15 Rabbit Polyclonal Antibody

CAT. NO. APA08110

KEY FEATURES

Target	MED15	Source / Host	Rabbit
Reactivity	Human, Mouse, Rat, Zebrafish	Clonality	Polyclonal
Applications	WB, IHC	Conjugation	Unconjugated
Form / Buffer	Liquid in 0.42% Potassium phosphate, 0.87% Sodium chloride, pH 7.3, 30% glycerol, and 0.01% sodium azide.		Storage at -20°C

BACKGROUND

Component of the Mediator complex, a coactivator involved in the regulated transcription of nearly all RNA polymerase II-dependent genes. Mediator functions as a bridge to convey information from gene-specific regulatory proteins to the basal RNA polymerase II transcription machinery. Mediator is recruited to promoters by direct interactions with regulatory proteins and serves as a scaffold for the assembly of a functional preinitiation complex with RNA polymerase II and the general transcription factors. Required for cholesterol-dependent gene regulation. Positively regulates the Nodal signaling pathway.

APPLICATION

To ensure optimal assay performance, AREX recommends conducting reagent titration tailored to each testing system for optimal detection results.

WB	1:500 - 1:1000
IHC	1:50 - 1:200

*Results are sample-specific. Please refer to your local assay conditions and test parameters for reference.

PRODUCT OVERVIEW

Description	Rabbit polyclonal antibody to MED15
Specificity	Recognizes endogenous levels of MED15 protein.
Antibody Type	Primary antibody
Immunogen	KLH-conjugated synthetic peptide encompassing a sequence within the center region of human MED15. The exact sequence is proprietary.
Purification	The antibody was purified by immunogen affinity chromatography.
Molecular Weight	Predicted: 87 kD; Observed: 87 kD
Form/Buffer	Liquid in 0.42% Potassium phosphate, 0.87% Sodium chloride, pH 7.3, 30% glycerol, and 0.01% sodium azide.
Alternative Names	ARC105; CTG7A; PCQAP; TIG1; TNRC7; Mediator of RNA polymerase II transcription subunit 15; Activator-recruited cofactor 105 kDa component; ARC105; CTG repeat protein 7a; Mediator complex subunit 15; Positive cofactor 2 glutamine/Q-rich-associated protein; PC2 glutamine/Q-rich-associated protein; TPA-inducible gene 1 protein; TIG-1; Trinucleotide repeat-containing gene 7 protein
Gene Symbol	MED15
Entrez Gene	51586(Human)
SwissProt	Q96RN5(Human); Q924H2(Mouse)

*AREX continuously optimizes our products. Webpage content may not reflect the latest updates. For inquiries, please contact info@arexbio.com or your local distributor.

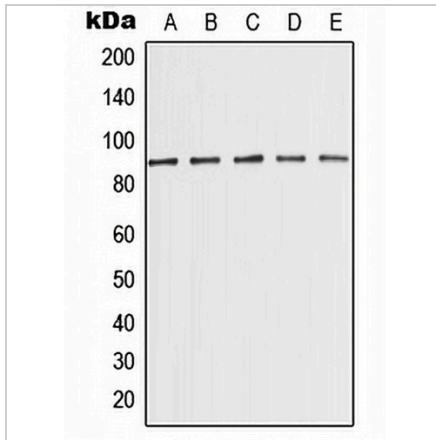
*Clone Number, Reactivity, Source/Host and Clonality can be found in the product name and Key Features section above.

DATASHEET

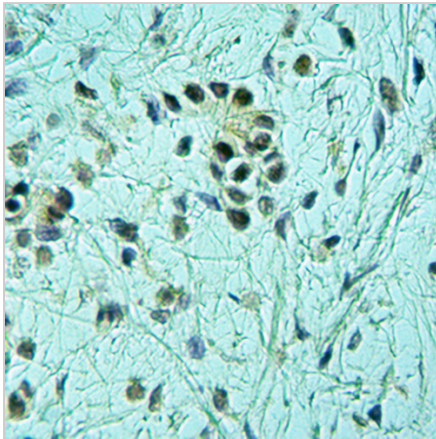
MED15 Rabbit Polyclonal Antibody

CAT. NO. APA08110

DATA



Western blot analysis of MED15 expression in MCF7 (A), K562 (B), HeLa (C), NIH3T3 (D), PC12 (E) whole cell lysates. (Predicted band size: 87 kD; Observed band size: 87 kD)



Immunohistochemical analysis of MED15 Antibody staining in human stomach cancer formalin fixed paraffin embedded tissue section. The section was pre-treated using heat mediated antigen retrieval with sodium citrate buffer (pH 6.0). The section was then incubated with the antibody at room temperature and detected using an HRP conjugated compact polymer system. DAB was used as the chromogen. The section was then counterstained with haematoxylin and mounted with DPX.

STORAGE

Store at 4°C short term. For long term storage, store at -20°C, avoiding freeze/thaw cycles.

NOTE

For Research Use Only. Not for diagnostic, therapeutics, prophylactic or in vivo use.