

DATASHEET

ARID4B Rabbit Polyclonal Antibody

CAT. NO. APA08119

KEY FEATURES

Target	ARID4B	Source / Host	Rabbit
Reactivity	Human, Rat	Clonality	Polyclonal
Applications	WB	Conjugation	Unconjugated
Form / Buffer	Liquid in 0.42% Potassium phosphate, 0.87% Sodium chloride, pH 7.3, 30% glycerol, and 0.01% sodium azide.		Storage at -20°C

BACKGROUND

Acts as a transcriptional repressor . May function in the assembly and/or enzymatic activity of the Sin3A corepressor complex or in mediating interactions between the complex and other regulatory complexes . Plays a role in the regulation of epigenetic modifications at the PWS/AS imprinting center near the SNRPN promoter, where it might function as part of a complex with RB1 and ARID4A. Involved in spermatogenesis, together with ARID4A, where it functions as a transcriptional coactivator for AR (androgen receptor) and enhances expression of genes required for sperm maturation. Regulates expression of the tight junction protein CLDN3 in the testis, which is important for integrity of the blood-testis barrier.

APPLICATION

To ensure optimal assay performance, AREX recommends conducting reagent titration tailored to each testing system for optimal detection results.

WB	1:500 - 1:1000
----	----------------

*Results are sample-specific. Please refer to your local assay conditions and test parameters for reference.

PRODUCT OVERVIEW

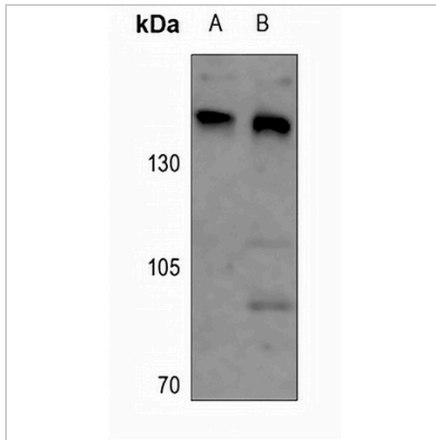
Description	Rabbit polyclonal antibody to ARID4B
Specificity	Recognizes endogenous levels of ARID4B protein.
Antibody Type	Primary antibody
Immunogen	KLH-conjugated synthetic peptide encompassing a sequence within the center region of human ARID4B. The exact sequence is proprietary.
Purification	The antibody was purified by immunogen affinity chromatography.
Molecular Weight	Predicted: 147 kD; Observed: 210 kD
Form/Buffer	Liquid in 0.42% Potassium phosphate, 0.87% Sodium chloride, pH 7.3, 30% glycerol, and 0.01% sodium azide.
Alternative Names	BRCAA1; RBBP1L1; RBP1L1; SAP180; AT-rich interactive domain-containing protein 4B; ARID domain-containing protein 4B; 180 kDa Sin3-associated polypeptide; Sin3-associated polypeptide p180; Breast cancer-associated antigen BRCAA1; Histone deacetylase complex subunit SAP180; Retinoblastoma-binding protein 1-like 1
Gene Symbol	ARID4B
Entrez Gene	51742(Human); 84481(Rat)
SwissProt	Q4LE39(Human); Q9JKB5(Rat)

*AREX continuously optimizes our products. Webpage content may not reflect the latest updates. For inquiries, please contact info@arexbio.com or your local distributor.

*Clone Number, Reactivity, Source/Host and Clonality can be found in the product name and Key Features section above.

DATASHEET**ARID4B Rabbit Polyclonal Antibody**

CAT. NO. APA08119

DATA

Western blot analysis of ARID4B expression in HEK293T (A), MCF7 (B) whole cell lysates. (Predicted band size: 147 kD; Observed band size: 210 kD)

STORAGE

Store at 4°C short term. For long term storage, store at -20°C, avoiding freeze/thaw cycles.

NOTE

For Research Use Only. Not for diagnostic, therapeutics, prophylactic or in vivo use.