

DATASHEET

ETAA1 Rabbit Polyclonal Antibody

CAT. NO. APA08126

KEY FEATURES

Target	ETAA1	Source / Host	Rabbit
Reactivity	Human, Mouse, Rat	Clonality	Polyclonal
Applications	WB	Conjugation	Unconjugated
Form / Buffer	Liquid in 0.42% Potassium phosphate, 0.87% Sodium chloride, pH 7.3, 30% glycerol, and 0.01% sodium azide.		Storage at -20°C

BACKGROUND

Replication stress response protein that accumulates at DNA damage sites and promotes replication fork progression and integrity . Recruited to stalled replication forks via interaction with the RPA complex and directly stimulates ATR kinase activity independently of TOPBP1 . Probably only regulates a subset of ATR targets .

APPLICATION

To ensure optimal assay performance, AREX recommends conducting reagent titration tailored to each testing system for optimal detection results.

WB	1:500 - 1:1000
----	----------------

*Results are sample-specific. Please refer to your local assay conditions and test parameters for reference.

PRODUCT OVERVIEW

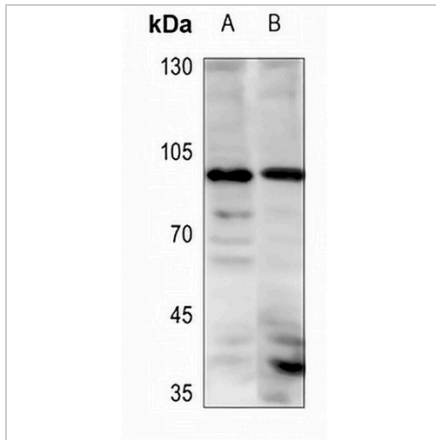
Description	Rabbit polyclonal antibody to ETAA1
Specificity	Recognizes endogenous levels of ETAA1 protein.
Antibody Type	Primary antibody
Immunogen	KLH-conjugated synthetic peptide encompassing a sequence within the N-term region of human ETAA1. The exact sequence is proprietary.
Purification	The antibody was purified by immunogen affinity chromatography.
Molecular Weight	Predicted: 103 kD; Observed: 103 kD
Form/Buffer	Liquid in 0.42% Potassium phosphate, 0.87% Sodium chloride, pH 7.3, 30% glycerol, and 0.01% sodium azide.
Alternative Names	ETAA16; Ewing's tumor-associated antigen 1; Ewing's tumor-associated antigen 16
Gene Symbol	ETAA1
Entrez Gene	54465(Human); 68145(Mouse)
SwissProt	Q9NY74(Human); Q5SVT3(Mouse)

*AREX continuously optimizes our products. Webpage content may not reflect the latest updates. For inquiries, please contact info@arexbio.com or your local distributor.

*Clone Number, Reactivity, Source/Host and Clonality can be found in the product name and Key Features section above.

DATASHEET**ETAA1 Rabbit Polyclonal Antibody**

CAT. NO. APA08126

DATA

Western blot analysis of ETAA1 expression in mouse muscle (A), rat muscle (B) whole cell lysates. (Predicted band size: 103 kD; Observed band size: 103 kD)

STORAGE

Store at 4°C short term. For long term storage, store at -20°C, avoiding freeze/thaw cycles.

NOTE

For Research Use Only. Not for diagnostic, therapeutics, prophylactic or in vivo use.