

**DATASHEET**

**PIGX Rabbit Polyclonal Antibody**

CAT. NO. APA08131

**KEY FEATURES**

Target	PIGX	Source / Host	Rabbit
Reactivity	Human, Mouse, Rat	Clonality	Polyclonal
Applications	WB, IHC	Conjugation	Unconjugated
Form / Buffer	Liquid in 0.42% Potassium phosphate, 0.87% Sodium chloride, pH 7.3, 30% glycerol, and 0.01% sodium azide.		Storage at -20°C

**BACKGROUND**

Stabilizing subunit of the glycosylphosphatidylinositol-mannosyltransferase I complex which catalyzes the transfer of the first mannose, via an alpha-1,4 bond from a dolichol-phosphate-mannose (Dol-P-Man) to the glucosaminyl acyl phosphatidylinositol (GlcN-(acyl)PI) intermediate to generate alpha-D-Man-(1->4)-alpha-D-GlcN-(1->6)-(1-radyl,2-acyl-sn-glycero-3-phospho)-2-acyl-inositol and participates in the sixth step of the glycosylphosphatidylinositol-anchor biosynthesis. Probably acts by stabilizing the mannosyltransferase PIGM.

**APPLICATION**

To ensure optimal assay performance, AREX recommends conducting reagent titration tailored to each testing system for optimal detection results.

WB	1:500 - 1:1000
IHC	1:50 - 1:100

\*Results are sample-specific. Please refer to your local assay conditions and test parameters for reference.

**PRODUCT OVERVIEW**

Description	Rabbit polyclonal antibody to PIGX
Specificity	Recognizes endogenous levels of PIGX protein.
Antibody Type	Primary antibody
Immunogen	KLH-conjugated synthetic peptide encompassing a sequence within the C-term region of human PIGX. The exact sequence is proprietary.
Purification	The antibody was purified by immunogen affinity chromatography.
Molecular Weight	Predicted: 28 kD; Observed: 28 kD
Form/Buffer	Liquid in 0.42% Potassium phosphate, 0.87% Sodium chloride, pH 7.3, 30% glycerol, and 0.01% sodium azide.
Alternative Names	Phosphatidylinositol-glycan biosynthesis class X protein; PIG-X
Gene Symbol	PIGX
Entrez Gene	54965(Human)
SwissProt	Q8TBF5(Human)

\*AREX continuously optimizes our products. Webpage content may not reflect the latest updates. For inquiries, please contact [info@arexbio.com](mailto:info@arexbio.com) or your local distributor.

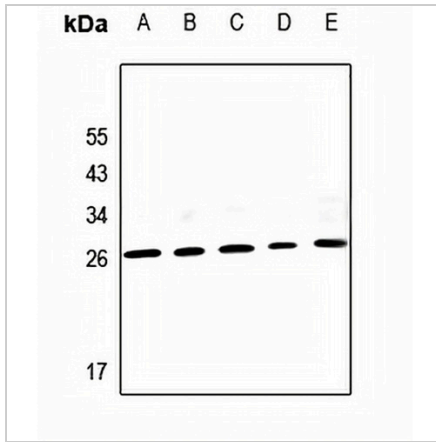
\*Clone Number, Reactivity, Source/Host and Clonality can be found in the product name and Key Features section above.

**DATASHEET**

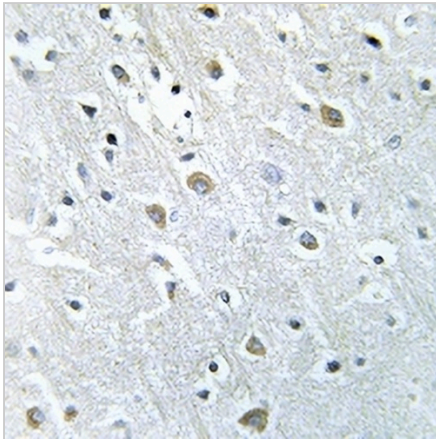
**PIGX Rabbit Polyclonal Antibody**

CAT. NO. APA08131

**DATA**



Western blot analysis of PIGX expression in LO2 (A), HEK293T (B), A549 (C), C6 (D), CT26 (E) whole cell lysates. (Predicted band size: 28 kD; Observed band size: 28 kD)



Immunohistochemical analysis of PIGX staining in human brain formalin fixed paraffin embedded tissue section. The section was pre-treated using heat mediated antigen retrieval with sodium citrate buffer (pH 6.0). The section was then incubated with the antibody at room temperature and detected using an HRP conjugated compact polymer system. DAB was used as the chromogen. The section was then counterstained with haematoxylin and mounted with DPX.

**STORAGE**

Store at 4°C short term. For long term storage, store at -20°C, avoiding freeze/thaw cycles.

**NOTE**

For Research Use Only. Not for diagnostic, therapeutics, prophylactic or in vivo use.