

DATASHEET

ZIP9 Rabbit Polyclonal Antibody

CAT. NO. APA08139

KEY FEATURES

Target	ZIP9	Source / Host	Rabbit
Reactivity	Human, Mouse, Rat, Chicken	Clonality	Polyclonal
Applications	WB	Conjugation	Unconjugated
Form / Buffer	Liquid in 0.42% Potassium phosphate, 0.87% Sodium chloride, pH 7.3, 30% glycerol, and 0.01% sodium azide.		Storage at-20°C

BACKGROUND

Transports zinc ions across cell and organelle membranes into the cytoplasm and regulates intracellular zinc homeostasis . Participates in the zinc ions efflux out of the secretory compartments . Regulates intracellular zinc level, resulting in the enhancement of AKT1 and MAPK3/MAPK1 (Erk1/2) phosphorylation in response to the BCR activation . Also functions as a membrane androgen receptor that mediates, through a G protein, the non-classical androgen signaling pathway, characterized by the activation of MAPK3/MAPK1 (Erk1/2) and transcription factors CREB1 or ATF1 . This pathway contributes to CLDN1 and CLDN5 expression and tight junction formation between adjacent Sertoli cells .

APPLICATION

To ensure optimal assay performance, AREX recommends conducting reagent titration tailored to each testing system for optimal detection results.

WB	1:500 - 1:1000
----	----------------

*Results are sample-specific. Please refer to your local assay conditions and test parameters for reference.

PRODUCT OVERVIEW

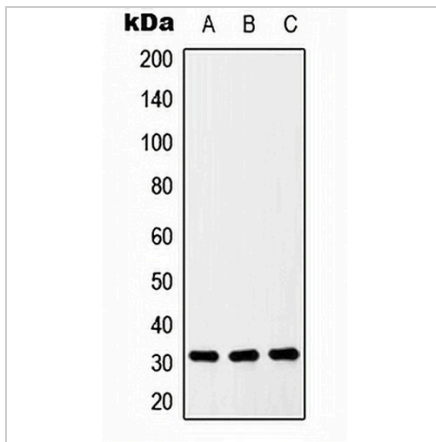
Description	Rabbit polyclonal antibody to ZIP9
Specificity	Recognizes endogenous levels of ZIP9 protein.
Antibody Type	Primary antibody
Immunogen	KLH-conjugated synthetic peptide encompassing a sequence within the center region of human ZIP9. The exact sequence is proprietary.
Purification	The antibody was purified by immunogen affinity chromatography.
Molecular Weight	Predicted: 32 kD; Observed: 33 kD
Form/Buffer	Liquid in 0.42% Potassium phosphate, 0.87% Sodium chloride, pH 7.3, 30% glycerol, and 0.01% sodium azide.
Alternative Names	ZIP9; Zinc transporter ZIP9; Solute carrier family 39 member 9; Zrt- and Irt-like protein 9; ZIP-9
Gene Symbol	SLC39A9
Entrez Gene	55334(Human); 328133(Mouse); 314275(Rat)
SwissProt	Q9NUM3(Human); Q8BFU1(Mouse); Q3KR82(Rat)

*AREX continuously optimizes our products. Webpage content may not reflect the latest updates. For inquiries, please contact info@arexbio.com or your local distributor.

*Clone Number, Reactivity, Source/Host and Clonality can be found in the product name and Key Features section above.

DATASHEET**ZIP9 Rabbit Polyclonal Antibody**

CAT. NO. APA08139

DATA

Western blot analysis of ZIP9 expression in U937 (A), Raw264.7 (B), H9C2 (C) whole cell lysates. (Predicted band size: 32 kD; Observed band size: 33 kD)

STORAGE

Store at 4°C short term. For long term storage, store at -20°C, avoiding freeze/thaw cycles.

NOTE

For Research Use Only. Not for diagnostic, therapeutics, prophylactic or in vivo use.