

DATASHEET

PPP4R1L Rabbit Polyclonal Antibody

CAT. NO. APA08140

KEY FEATURES

Target	PPP4R1L	Source / Host	Rabbit
Reactivity	Human, Mouse, Rat	Clonality	Polyclonal
Applications	WB	Conjugation	Unconjugated
Form / Buffer	Liquid in 0.42% Potassium phosphate, 0.87% Sodium chloride, pH 7.3, 30% glycerol, and 0.01% sodium azide.		Storage at-20°C

BACKGROUND

May be a regulatory subunit of serine/threonine-protein phosphatase 4.

APPLICATION

To ensure optimal assay performance, AREX recommends conducting reagent titration tailored to each testing system for optimal detection results.

WB	1:500 - 1:1000
----	----------------

*Results are sample-specific. Please refer to your local assay conditions and test parameters for reference.

PRODUCT OVERVIEW

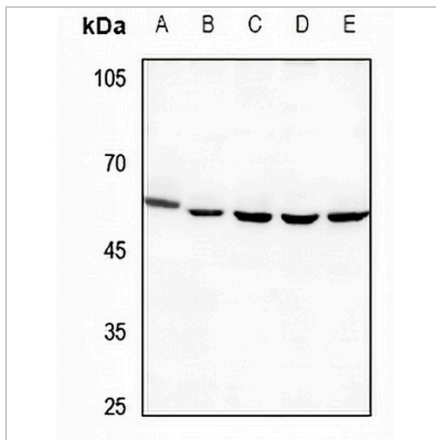
Description	Rabbit polyclonal antibody to PPP4R1L
Specificity	Recognizes endogenous levels of PPP4R1L protein.
Antibody Type	Primary antibody
Immunogen	KLH-conjugated synthetic peptide encompassing a sequence within the center region of human PPP4R1L. The exact sequence is proprietary.
Purification	The antibody was purified by immunogen affinity chromatography.
Molecular Weight	Predicted: 45 kD; Observed: 60 kD
Form/Buffer	Liquid in 0.42% Potassium phosphate, 0.87% Sodium chloride, pH 7.3, 30% glycerol, and 0.01% sodium azide.
Alternative Names	C20orf192; Putative serine/threonine-protein phosphatase 4 regulatory subunit 1-like
Gene Symbol	PPP4R1L
Entrez Gene	55370(Human)
SwissProt	Q9P1A2(Human)

*AREX continuously optimizes our products. Webpage content may not reflect the latest updates. For inquiries, please contact info@arexbio.com or your local distributor.

*Clone Number, Reactivity, Source/Host and Clonality can be found in the product name and Key Features section above.

DATASHEET**PPP4R1L Rabbit Polyclonal Antibody**

CAT. NO. APA08140

DATA

Western blot analysis of PPP4R1L expression in PC12 (A), AML12 (B), LO2 (C), COS7 (D), A549 (E) whole cell lysates. (Predicted band size: 45 kD; Observed band size: 60 kD)

STORAGE

Store at 4°C short term. For long term storage, store at -20°C, avoiding freeze/thaw cycles.

NOTE

For Research Use Only. Not for diagnostic, therapeutics, prophylactic or in vivo use.