

DATASHEET

Apolipoprotein E Receptor 2 Rabbit Polyclonal Antibody

CAT. NO. APA08148

KEY FEATURES

Target	Apolipoprotein E Receptor 2	Source / Host	Rabbit
Reactivity	Human, Mouse, Rat	Clonality	Polyclonal
Applications	WB	Conjugation	Unconjugated
Form / Buffer	Liquid in 0.42% Potassium phosphate, 0.87% Sodium chloride, pH 7.3, 30% glycerol, and 0.01% sodium azide.	Storage	at-20°C

BACKGROUND

Cell surface receptor for Reelin (RELN) and apolipoprotein E (apoE)-containing ligands and apolipoprotein E (apoE)-containing ligands . LRP8 participates in transmitting the extracellular Reelin signal to intracellular signaling processes, by binding to DAB1 on its cytoplasmic tail . Reelin acts via both the VLDL receptor (VLDLR) and LRP8 to regulate DAB1 tyrosine phosphorylation and microtubule function in neurons . LRP8 has higher affinity for Reelin than VLDLR . LRP8 is thus a key component of the Reelin pathway which governs neuronal layering of the forebrain during embryonic brain development . Binds the endoplasmic reticulum resident receptor-associated protein (RAP) .

APPLICATION

To ensure optimal assay performance, AREX recommends conducting reagent titration tailored to each testing system for optimal detection results.

WB	1:500 - 1:1000
----	----------------

*Results are sample-specific. Please refer to your local assay conditions and test parameters for reference.

PRODUCT OVERVIEW

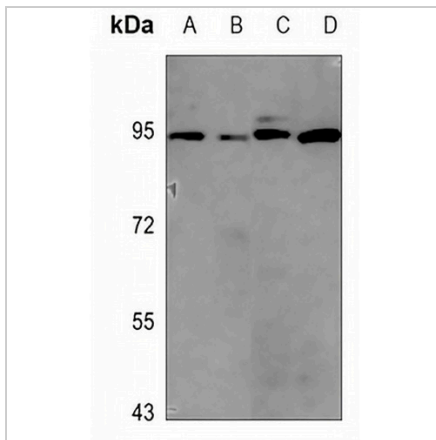
Description	Rabbit polyclonal antibody to Apolipoprotein E Receptor 2
Specificity	Recognizes endogenous levels of Apolipoprotein E Receptor 2 protein.
Antibody Type	Primary antibody
Immunogen	KLH-conjugated synthetic peptide encompassing a sequence within the center region of human Apolipoprotein E Receptor 2. The exact sequence is proprietary.
Purification	The antibody was purified by immunogen affinity chromatography.
Molecular Weight	Predicted: 105 kD; Observed: 95 kD
Form/Buffer	Liquid in 0.42% Potassium phosphate, 0.87% Sodium chloride, pH 7.3, 30% glycerol, and 0.01% sodium azide.
Alternative Names	APOER2; Low-density lipoprotein receptor-related protein 8; LRP-8; Apolipoprotein E receptor 2
Gene Symbol	LRP8
Entrez Gene	7804(Human)
SwissProt	Q14114(Human); Q924X6(Mouse)

*AREX continuously optimizes our products. Webpage content may not reflect the latest updates. For inquiries, please contact info@arexbio.com or your local distributor.

*Clone Number, Reactivity, Source/Host and Clonality can be found in the product name and Key Features section above.

DATASHEET**Apolipoprotein E Receptor 2 Rabbit Polyclonal Antibody**

CAT. NO. APA08148

DATA

Western blot analysis of Apolipoprotein E Receptor 2 expression in HEK293T (A), H1792 (B), mouse spleen (C), rat spleen (D) whole cell lysates. (Predicted band size: 105 kD; Observed band size: 95 kD)

STORAGE

Store at 4°C short term. For long term storage, store at -20°C, avoiding freeze/thaw cycles.

NOTE

For Research Use Only. Not for diagnostic, therapeutics, prophylactic or in vivo use.