

DATASHEET

RCC2 Rabbit Polyclonal Antibody

CAT. NO. APA08149

KEY FEATURES

Target	RCC2	Source / Host	Rabbit
Reactivity	Human, Mouse, Rat	Clonality	Polyclonal
Applications	WB, IHC	Conjugation	Unconjugated
Form / Buffer	Liquid in 0.42% Potassium phosphate, 0.87% Sodium chloride, pH 7.3, 30% glycerol, and 0.01% sodium azide.		Storage at -20°C

BACKGROUND

Multifunctional protein that may affect its functions by regulating the activity of small GTPases, such as RAC1 and RALA . Required for normal progress through the cell cycle, both during interphase and during mitosis . Required for the presence of normal levels of MAD2L1, AURKB and BIRC5 on inner centromeres during mitosis, and for normal attachment of kinetochores to mitotic spindles . Required for normal organization of the microtubule cytoskeleton in interphase cells . Functions as guanine nucleotide exchange factor (GEF) for RALA . Interferes with the activation of RAC1 by guanine nucleotide exchange factors . Prevents accumulation of active, GTP-bound RAC1, and suppresses RAC1-mediated reorganization of the actin cytoskeleton and formation of membrane protrusions .

APPLICATION

To ensure optimal assay performance, AREX recommends conducting reagent titration tailored to each testing system for optimal detection results.

WB	1:500 - 1:1000
IHC	1:50 - 1:100

*Results are sample-specific. Please refer to your local assay conditions and test parameters for reference.

PRODUCT OVERVIEW

Description	Rabbit polyclonal antibody to RCC2
Specificity	Recognizes endogenous levels of RCC2 protein.
Antibody Type	Primary antibody
Immunogen	KLH-conjugated synthetic peptide encompassing a sequence within the C-term region of human RCC2. The exact sequence is proprietary.
Purification	The antibody was purified by immunogen affinity chromatography.
Molecular Weight	Predicted: 56 kD; Observed: 56 kD
Form/Buffer	Liquid in 0.42% Potassium phosphate, 0.87% Sodium chloride, pH 7.3, 30% glycerol, and 0.01% sodium azide.
Alternative Names	KIAA1470; TD60; Protein RCC2; RCC1-like protein TD-60; Telophase disk protein of 60 kDa
Gene Symbol	RCC2
Entrez Gene	55920(Human); 108911(Mouse)
SwissProt	Q9P258(Human); Q8BK67(Mouse)

*AREX continuously optimizes our products. Webpage content may not reflect the latest updates. For inquiries, please contact info@arexbio.com or your local distributor.

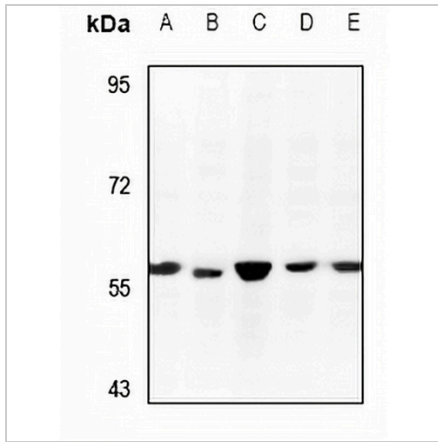
*Clone Number, Reactivity, Source/Host and Clonality can be found in the product name and Key Features section above.

DATASHEET

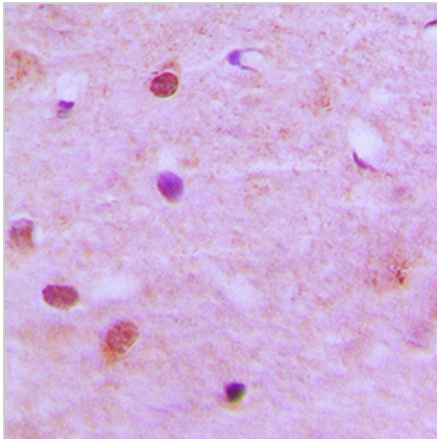
RCC2 Rabbit Polyclonal Antibody

CAT. NO. APA08149

DATA



Western blot analysis of RCC2 expression in C6 (A), CT26 (B), HEK293T (C), HCT116 (D), HepG2 (E) whole cell lysates. (Predicted band size: 56 kD; Observed band size: 56 kD)



Immunohistochemical analysis of RCC2 staining in human brain formalin fixed paraffin embedded tissue section. The section was pre-treated using heat mediated antigen retrieval with sodium citrate buffer (pH 6.0). The section was then incubated with the antibody at room temperature and detected using an HRP conjugated compact polymer system. DAB was used as the chromogen. The section was then counterstained with haematoxylin and mounted with DPX.

STORAGE

Store at 4°C short term. For long term storage, store at -20°C, avoiding freeze/thaw cycles.

NOTE

For Research Use Only. Not for diagnostic, therapeutics, prophylactic or in vivo use.