

DATASHEET

Collagen 20 alpha 1 Rabbit Polyclonal Antibody

CAT. NO. APA08168

KEY FEATURES

| | | | |
|---------------|---|---------------|--------------|
| Target | Collagen 20 alpha 1 | Source / Host | Rabbit |
| Reactivity | Human, Mouse, Chicken | Clonality | Polyclonal |
| Applications | WB, IHC, IF/ICC | Conjugation | Unconjugated |
| Form / Buffer | Liquid in 0.42% Potassium phosphate, 0.87% Sodium chloride, pH 7.3, 30% glycerol, and 0.01% sodium azide. | Storage | at-20°C |

BACKGROUND

Probable collagen protein.

APPLICATION

To ensure optimal assay performance, AREX recommends conducting reagent titration tailored to each testing system for optimal detection results.

| | |
|--------|----------------|
| WB | 1:500 - 1:1000 |
| IHC | 1:100 - 1:200 |
| IF/ICC | 1:100 - 1:500 |

*Results are sample-specific. Please refer to your local assay conditions and test parameters for reference.

PRODUCT OVERVIEW

| | |
|-------------------|--|
| Description | Rabbit polyclonal antibody to Collagen 20 alpha 1 |
| Specificity | Recognizes endogenous levels of Collagen 20 alpha 1 protein. |
| Antibody Type | Primary antibody |
| Immunogen | KLH-conjugated synthetic peptide encompassing a sequence within the C-term region of human Collagen 20 alpha 1. The exact sequence is proprietary. |
| Purification | The antibody was purified by immunogen affinity chromatography. |
| Molecular Weight | Predicted: 135 kD; Observed: 135 kD |
| Form/Buffer | Liquid in 0.42% Potassium phosphate, 0.87% Sodium chloride, pH 7.3, 30% glycerol, and 0.01% sodium azide. |
| Alternative Names | KIAA1510; Collagen alpha-1(XX) chain |
| Gene Symbol | COL20A1 |
| Entrez Gene | 57642(Human) |
| SwissProt | Q9P218(Human) |

*AREX continuously optimizes our products. Webpage content may not reflect the latest updates. For inquiries, please contact info@arexbio.com or your local distributor.

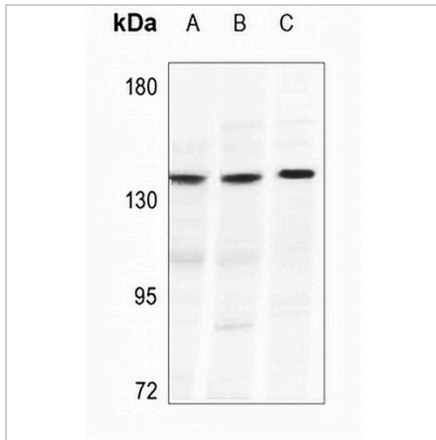
*Clone Number, Reactivity, Source/Host and Clonality can be found in the product name and Key Features section above.

DATASHEET

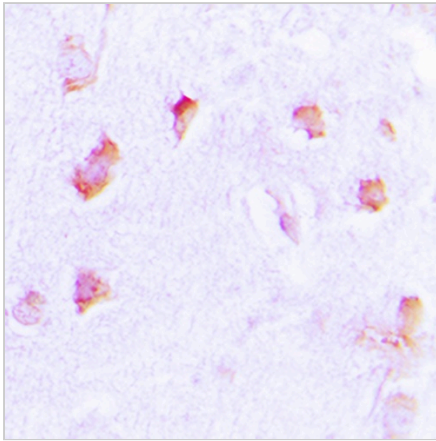
Collagen 20 alpha 1 Rabbit Polyclonal Antibody

CAT. NO. APA08168

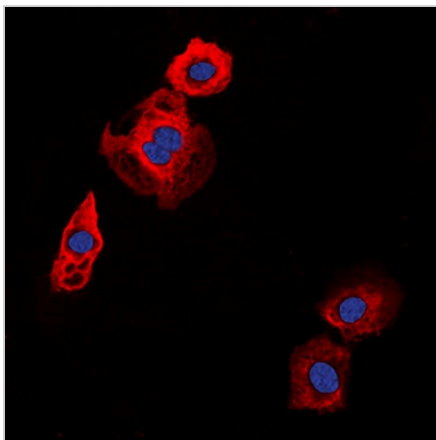
DATA



Western blot analysis of Collagen 20 alpha 1 expression in HEK293T (A), HepG2 (B), A549 (C) whole cell lysates. (Predicted band size: 135 kDa; Observed band size: 135 kDa)



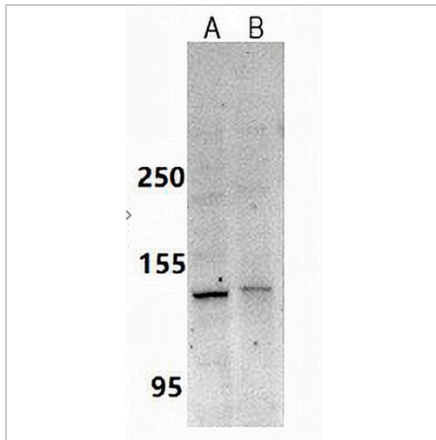
Immunohistochemical analysis of Collagen 20 alpha 1 staining in human brain formalin fixed paraffin embedded tissue section. The section was pre-treated using heat mediated antigen retrieval with sodium citrate buffer (pH 6.0). The section was then incubated with the antibody at room temperature and detected using an HRP conjugated compact polymer system. DAB was used as the chromogen. The section was then counterstained with haematoxylin and mounted with DPX.



Immunofluorescent analysis of Collagen 20 alpha 1 staining in HT29 cells. Formalin-fixed cells were permeabilized with 0.1% Triton X-100 in TBS for 5-10 minutes and blocked with 3% BSA-PBS for 30 minutes at room temperature. Cells were probed with the primary antibody in 3% BSA-PBS and incubated overnight at 4 °C in a humidified chamber. Cells were washed with PBST and incubated with a DyLight 594-conjugated secondary antibody (red) in PBS at room temperature in the dark. DAPI was used to stain the cell nuclei (blue).

DATASHEET**Collagen 20 alpha 1 Rabbit Polyclonal Antibody**

CAT. NO. APA08168

DATA (CONTINUED)

Western blot analysis of Collagen 20 alpha 1 expression in A549 (A), AML12 (B) whole cell lysates. (Predicted band size: 135 kD; Observed band size: 135 kD)

STORAGE

Store at 4°C short term. For long term storage, store at -20°C, avoiding freeze/thaw cycles.

NOTE

For Research Use Only. Not for diagnostic, therapeutics, prophylactic or in vivo use.