

**DATASHEET**

**TRIB3 Rabbit Polyclonal Antibody**

CAT. NO. APA08169

**KEY FEATURES**

|               |   |               |                     |
|---------------|---|---------------|---------------------|
| Target        | TRIB3   | Source / Host | Rabbit              |
| Reactivity    | Human, Mouse, Rat   | Clonality     | Polyclonal          |
| Applications  | WB  | Conjugation   | Unconjugated        |
| Form / Buffer | Liquid in 0.42% Potassium phosphate, 0.87% Sodium chloride, pH 7.3, 30% glycerol, and 0.01% sodium azide. |               | Storage<br>at -20°C |

**BACKGROUND**

Inactive protein kinase which acts as a regulator of the integrated stress response (ISR), a process for adaptation to various stress, a process for adaptation to various stress. Inhibits the transcriptional activity of DDIT3/CHOP and is involved in DDIT3/CHOP-dependent cell death during ER stress. May play a role in programmed neuronal cell death but does not appear to affect non-neuronal cells. Acts as a negative feedback regulator of the ATF4-dependent transcription during the ISR: while TRIB3 expression is promoted by ATF4, TRIB3 protein interacts with ATF4 and inhibits ATF4 transcription activity. Disrupts insulin signaling by binding directly to Akt kinases and blocking their activation. May bind directly to and mask the 'Thr-308' phosphorylation site in AKT1.

**APPLICATION**

To ensure optimal assay performance, AREX recommends conducting reagent titration tailored to each testing system for optimal detection results.

|    |                |
|----|----------------|
| WB | 1:500 - 1:1000 |
|----|----------------|

\*Results are sample-specific. Please refer to your local assay conditions and test parameters for reference.

**PRODUCT OVERVIEW**

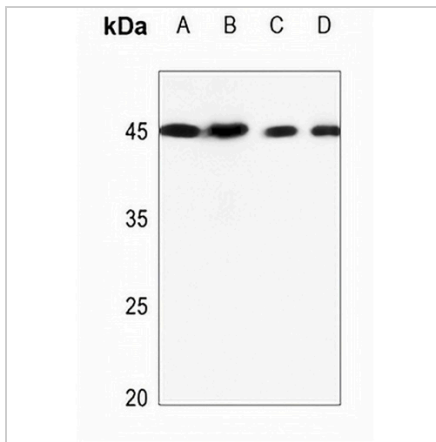
|                   |  |
|-------------------|--|
| Description       | Rabbit polyclonal antibody to TRIB3  |
| Specificity       | Recognizes endogenous levels of TRIB3 protein.   |
| Antibody Type     | Primary antibody   |
| Immunogen         | KLH-conjugated synthetic peptide encompassing a sequence within the N-term region of human TRIB3. The exact sequence is proprietary.                 |
| Purification      | The antibody was purified by immunogen affinity chromatography.  |
| Molecular Weight  | Predicted: 39 kD; Observed: 45 kD  |
| Form/Buffer       | Liquid in 0.42% Potassium phosphate, 0.87% Sodium chloride, pH 7.3, 30% glycerol, and 0.01% sodium azide.  |
| Alternative Names | C20orf97; NIPK; SKIP3; TRB3; Tribbles homolog 3; TRB-3; Neuronal cell death-inducible putative kinase; SINK; p65-interacting inhibitor of NF-kappa-B |
| Gene Symbol       | TRIB3  |
| Entrez Gene       | 57761(Human); 228775(Mouse); 246273(Rat)   |
| SwissProt         | Q96RU7(Human); Q8K4K2(Mouse); Q9WTQ6(Rat)  |

\*AREX continuously optimizes our products. Webpage content may not reflect the latest updates. For inquiries, please contact [info@arexbio.com](mailto:info@arexbio.com) or your local distributor.

\*Clone Number, Reactivity, Source/Host and Clonality can be found in the product name and Key Features section above.

**DATASHEET****TRIB3 Rabbit Polyclonal Antibody**

CAT. NO. APA08169

**DATA**

Western blot analysis of TRIB3 expression in HEK293T (A), A549 (B), H1688 (C), mouse lung (D) whole cell lysates. (Predicted band size: 39 kD; Observed band size: 45 kD)

**STORAGE**

Store at 4°C short term. For long term storage, store at -20°C, avoiding freeze/thaw cycles.

**NOTE**

For Research Use Only. Not for diagnostic, therapeutics, prophylactic or in vivo use.