

DATASHEET

MYL7 Rabbit Polyclonal Antibody

CAT. NO. APA08172

KEY FEATURES

Target	MYL7	Source / Host	Rabbit
Reactivity	Human, Mouse, Rat	Clonality	Polyclonal
Applications	WB, IF/ICC	Conjugation	Unconjugated
Form / Buffer	Liquid in 0.42% Potassium phosphate, 0.87% Sodium chloride, pH 7.3, 30% glycerol, and 0.01% sodium azide.		Storage at-20°C

BACKGROUND

Myosin regulatory light chain 2, atrial isoform (MYL7), also known as Myosin regulatory light chain 7. Subunit: Myosin is a hexamer of 2 heavy chains and 4 light chains Tissue specificity: Predominantly expressed in adult atrial muscle

APPLICATION

To ensure optimal assay performance, AREX recommends conducting reagent titration tailored to each testing system for optimal detection results.

WB	1:500 - 1:1000
IF/ICC	1:50 - 1:200

*Results are sample-specific. Please refer to your local assay conditions and test parameters for reference.

PRODUCT OVERVIEW

Description	Rabbit polyclonal antibody to MYL7
Specificity	Recognizes endogenous levels of MYL7 protein.
Antibody Type	Primary antibody
Immunogen	KLH-conjugated synthetic peptide encompassing a sequence within the center region of human MYL7. The exact sequence is proprietary.
Purification	The antibody was purified by immunogen affinity chromatography.
Molecular Weight	Predicted: 19 kD; Observed: 19 kD
Form/Buffer	Liquid in 0.42% Potassium phosphate, 0.87% Sodium chloride, pH 7.3, 30% glycerol, and 0.01% sodium azide.
Alternative Names	MYL2A; MYLC2A; Myosin regulatory light chain 2, atrial isoform; MLC-2a; MLC2a; Myosin light chain 2a; Myosin regulatory light chain 7
Gene Symbol	MYL7
Entrez Gene	58498(Human); 17898(Mouse)
SwissProt	Q01449(Human); Q9QVP4(Mouse)

*AREX continuously optimizes our products. Webpage content may not reflect the latest updates. For inquiries, please contact info@arexbio.com or your local distributor.

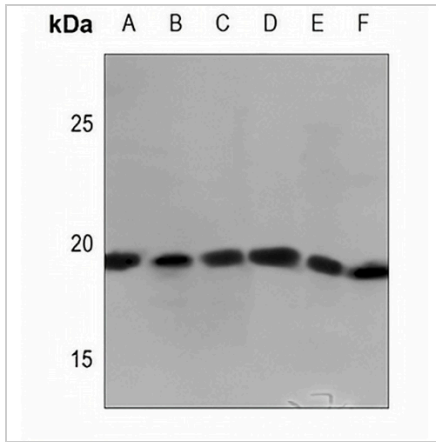
*Clone Number, Reactivity, Source/Host and Clonality can be found in the product name and Key Features section above.

DATASHEET

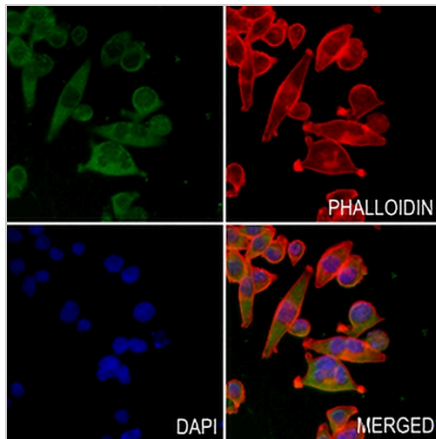
MYL7 Rabbit Polyclonal Antibody

CAT. NO. APA08172

DATA



Western blot analysis of MYL7 expression in HEK293T (A), DLD (B), U2OS (C), mouse spleen (D), rat kidney (E), rat spleen (F) whole cell lysates. (Predicted band size: 19 kD; Observed band size: 19 kD)



Immunofluorescent analysis of MYL7 staining in MCF7 cells. Formalin-fixed cells were permeabilized with 0.1% Triton X-100 in TBS for 5-10 minutes and blocked with 3% BSA-PBS for 30 minutes at room temperature. Cells were probed with the primary antibody in 3% BSA-PBS and incubated overnight at 4 °C in a humidified chamber. Cells were washed with PBST and incubated with a AREX® Fluor 488 -conjugated secondary antibody (green) in PBS at room temperature in the dark. Phalloidin - AREX® Fluor 594 was used to stain Actin filaments (red). DAPI was used to stain the cell nuclei (blue).

STORAGE

Store at 4°C short term. For long term storage, store at -20°C, avoiding freeze/thaw cycles.

NOTE

For Research Use Only. Not for diagnostic, therapeutics, prophylactic or in vivo use.