

DATASHEET

CHP2 Rabbit Polyclonal Antibody

CAT. NO. APA08179

KEY FEATURES

Target	CHP2	Source / Host	Rabbit
Reactivity	Human, Mouse, Rat, Monkey	Clonality	Polyclonal
Applications	WB	Conjugation	Unconjugated
Form / Buffer	Liquid in 0.42% Potassium phosphate, 0.87% Sodium chloride, pH 7.3, 30% glycerol, and 0.01% sodium azide.	Storage	at-20°C

BACKGROUND

Functions as an integral cofactor in cell pH regulation by controlling plasma membrane-type Na(+)/H(+) exchange activity. Binds to and activates SLC9A1/NHE1 in a serum-independent manner, thus increasing pH and protecting cells from serum deprivation-induced death. Also plays a role in the regulation of cell proliferation and tumor growth by increasing the phosphatase activity of PPP3CA in a calcium-dependent manner. Activator of the calcineurin/NFAT signaling pathway. Involved in the cytoplasmic translocation of the transcription factor NFATC3 to the nucleus.

APPLICATION

To ensure optimal assay performance, AREX recommends conducting reagent titration tailored to each testing system for optimal detection results.

WB	1:500 - 1:1000
----	----------------

*Results are sample-specific. Please refer to your local assay conditions and test parameters for reference.

PRODUCT OVERVIEW

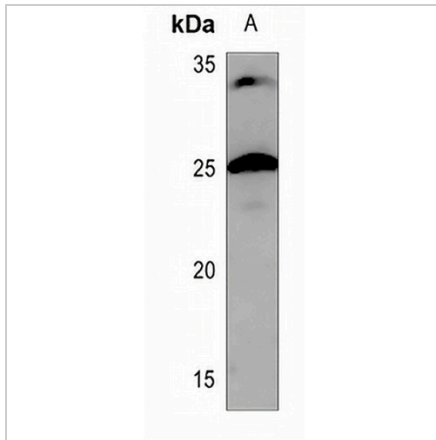
Description	Rabbit polyclonal antibody to CHP2
Specificity	Recognizes endogenous levels of CHP2 protein.
Antibody Type	Primary antibody
Immunogen	KLH-conjugated synthetic peptide encompassing a sequence within the center region of human CHP2. The exact sequence is proprietary.
Purification	The antibody was purified by immunogen affinity chromatography.
Molecular Weight	Predicted: 22 kD; Observed: 25 kD
Form/Buffer	Liquid in 0.42% Potassium phosphate, 0.87% Sodium chloride, pH 7.3, 30% glycerol, and 0.01% sodium azide.
Alternative Names	HCA520; Calcineurin B homologous protein 2; Hepatocellular carcinoma-associated antigen 520
Gene Symbol	CHP2
Entrez Gene	63928(Human); 70261(Mouse); 308965(Rat)
SwissProt	O43745(Human); Q9D869(Mouse); Q810D1(Rat)

*AREX continuously optimizes our products. Webpage content may not reflect the latest updates. For inquiries, please contact info@arexbio.com or your local distributor.

*Clone Number, Reactivity, Source/Host and Clonality can be found in the product name and Key Features section above.

DATASHEET**CHP2 Rabbit Polyclonal Antibody**

CAT. NO. APA08179

DATA

Western blot analysis of CHP2 expression in A549 (A) whole cell lysates. (Predicted band size: 22 kD; Observed band size: 25 kD)

STORAGE

Store at 4°C short term. For long term storage, store at -20°C, avoiding freeze/thaw cycles.

NOTE

For Research Use Only. Not for diagnostic, therapeutics, prophylactic or in vivo use.