

DATASHEET

NIP1 Rabbit Polyclonal Antibody

CAT. NO. APA08180

KEY FEATURES

Target	NIP1	Source / Host	Rabbit
Reactivity	Human, Mouse, Rat, Bovine	Clonality	Polyclonal
Applications	WB, IHC, IF/ICC	Conjugation	Unconjugated
Form / Buffer	Liquid in 0.42% Potassium phosphate, 0.87% Sodium chloride, pH 7.3, 30% glycerol, and 0.01% sodium azide.		Storage at-20°C

BACKGROUND

Inhibits the interaction of APBA2 with amyloid-beta precursor protein (APP), and hence allows formation of amyloid-beta. May enhance the activity of HIF1A and thus promote glycolysis under normoxic conditions; the function requires its ABM domain and may implicate the stabilization of the interaction between HIF1AN and APBA3.

APPLICATION

To ensure optimal assay performance, AREX recommends conducting reagent titration tailored to each testing system for optimal detection results.

WB	1:500 - 1:1000
IHC	1:50 - 1:100
IF/ICC	1:50 - 1:200

*Results are sample-specific. Please refer to your local assay conditions and test parameters for reference.

PRODUCT OVERVIEW

Description	Rabbit polyclonal antibody to NIP1
Specificity	Recognizes endogenous levels of NIP1 protein.
Antibody Type	Primary antibody
Immunogen	KLH-conjugated synthetic peptide encompassing a sequence within the C-term region of human NIP1. The exact sequence is proprietary.
Purification	The antibody was purified by immunogen affinity chromatography.
Molecular Weight	Predicted: 44 kD; Observed: 41 kD
Form/Buffer	Liquid in 0.42% Potassium phosphate, 0.87% Sodium chloride, pH 7.3, 30% glycerol, and 0.01% sodium azide.
Alternative Names	APBA2BP; NIP1; SYTIP2; XB51; N-terminal EF-hand calcium-binding protein 3; Amyloid beta A4 protein-binding family A member 2-binding protein; Nek2-interacting protein 1; Neuronal calcium-binding protein 3; X11L-binding protein 51
Gene Symbol	NECAB3
Entrez Gene	63941(Human); 56846(Mouse)
SwissProt	Q96P71(Human); Q9D6J4(Mouse)

*AREX continuously optimizes our products. Webpage content may not reflect the latest updates. For inquiries, please contact info@arexbio.com or your local distributor.

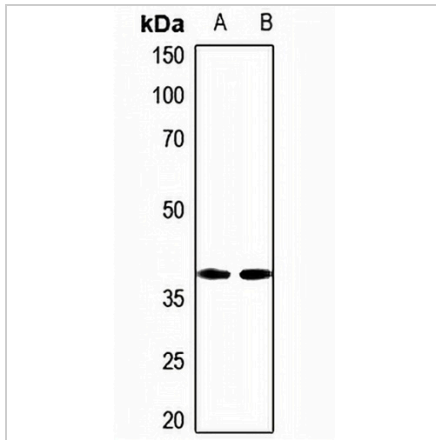
*Clone Number, Reactivity, Source/Host and Clonality can be found in the product name and Key Features section above.

DATASHEET

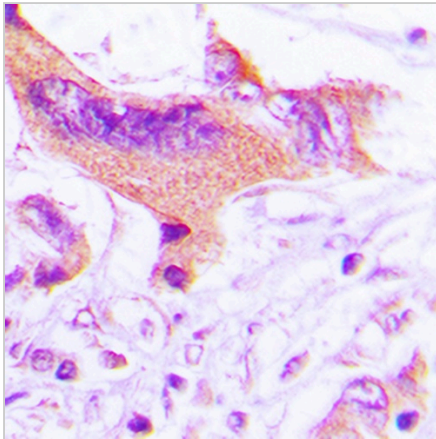
NIP1 Rabbit Polyclonal Antibody

CAT. NO. APA08180

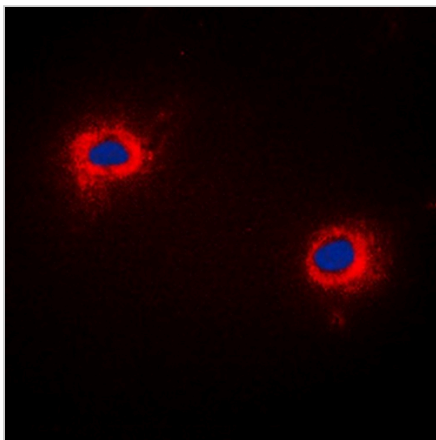
DATA



Western blot analysis of NIP1 expression in mouse lung (A), mouse kidney (B) whole cell lysates. (Predicted band size: 44 kD; Observed band size: 41 kD)



Immunohistochemical analysis of NIP1 staining in human lung cancer formalin fixed paraffin embedded tissue section. The section was pre-treated using heat mediated antigen retrieval with sodium citrate buffer (pH 6.0). The section was then incubated with the antibody at room temperature and detected using an HRP conjugated compact polymer system. DAB was used as the chromogen. The section was then counterstained with haematoxylin and mounted with DPX.



Immunofluorescent analysis of NIP1 staining in COLO205 cells. Formalin-fixed cells were permeabilized with 0.1% Triton X-100 in TBS for 5-10 minutes and blocked with 3% BSA-PBS for 30 minutes at room temperature. Cells were probed with the primary antibody in 3% BSA-PBS and incubated overnight at 4 °C in a humidified chamber. Cells were washed with PBST and incubated with a DyLight 594-conjugated secondary antibody (red) in PBS at room temperature in the dark. DAPI was used to stain the cell nuclei (blue).

STORAGE

Store at 4°C short term. For long term storage, store at -20°C, avoiding freeze/thaw cycles.

NOTE

For Research Use Only. Not for diagnostic, therapeutics, prophylactic or in vivo use.