

DATASHEET

NOC3L Rabbit Polyclonal Antibody

CAT. NO. APA08184

KEY FEATURES

Target	NOC3L	Source / Host	Rabbit
Reactivity	Human, Mouse, Rat, Bovine, Pig	Clonality	Polyclonal
Applications	WB	Conjugation	Unconjugated
Form / Buffer	Liquid in 0.42% Potassium phosphate, 0.87% Sodium chloride, pH 7.3, 30% glycerol, and 0.01% sodium azide.		Storage at -20°C

BACKGROUND

May be required for adipogenesis.

APPLICATION

To ensure optimal assay performance, AREX recommends conducting reagent titration tailored to each testing system for optimal detection results.

WB	1:500 - 1:1000
----	----------------

*Results are sample-specific. Please refer to your local assay conditions and test parameters for reference.

PRODUCT OVERVIEW

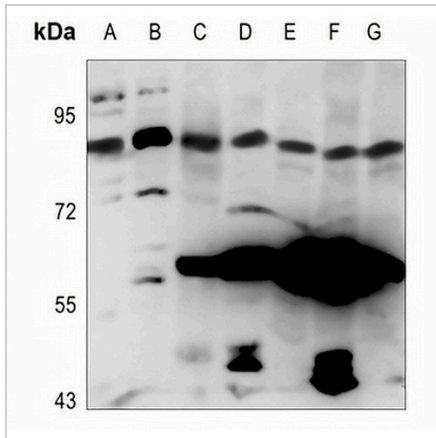
Description	Rabbit polyclonal antibody to NOC3L
Specificity	Recognizes endogenous levels of NOC3L protein.
Antibody Type	Primary antibody
Immunogen	KLH-conjugated synthetic peptide encompassing a sequence within the center region of human NOC3L. The exact sequence is proprietary.
Purification	The antibody was purified by immunogen affinity chromatography.
Molecular Weight	Predicted: 92 kD; Observed: 93 kD
Form/Buffer	Liquid in 0.42% Potassium phosphate, 0.87% Sodium chloride, pH 7.3, 30% glycerol, and 0.01% sodium azide.
Alternative Names	AD24; C10orf117; FAD24; Nucleolar complex protein 3 homolog; NOC3 protein homolog; Factor for adipocyte differentiation 24; NOC3-like protein; Nucleolar complex-associated protein 3-like protein
Gene Symbol	NOC3L
Entrez Gene	64318(Human); 57753(Mouse)
SwissProt	Q8WTT2(Human); Q8VI84(Mouse)

*AREX continuously optimizes our products. Webpage content may not reflect the latest updates. For inquiries, please contact info@arexbio.com or your local distributor.

*Clone Number, Reactivity, Source/Host and Clonality can be found in the product name and Key Features section above.

DATASHEET**NOC3L Rabbit Polyclonal Antibody**

CAT. NO. APA08184

DATA

Western blot analysis of NOC3L expression in HEK293T (A), A549 (B), LOVO (C), mouse liver (D), mouse spleen (E), rat liver (F), rat spleen (G) whole cell lysates. (Predicted band size: 92 kD; Observed band size: 93 kD)

STORAGE

Store at 4°C short term. For long term storage, store at -20°C, avoiding freeze/thaw cycles.

NOTE

For Research Use Only. Not for diagnostic, therapeutics, prophylactic or in vivo use.