

DATASHEET

OTUB2 Rabbit Polyclonal Antibody

CAT. NO. APA08202

KEY FEATURES

Target	OTUB2	Source / Host	Rabbit
Reactivity	Human, Mouse, Rat, Bovine	Clonality	Polyclonal
Applications	WB, IHC	Conjugation	Unconjugated
Form / Buffer	Liquid in 0.42% Potassium phosphate, 0.87% Sodium chloride, pH 7.3, 30% glycerol, and 0.01% sodium azide.		Storage at -20°C

BACKGROUND

Hydrolase that can remove conjugated ubiquitin from proteins in vitro and may therefore play an important regulatory role at the level of protein turnover by preventing degradation. Mediates deubiquitination of 'Lys-11', 'Lys-48' and 'Lys-63'-linked polyubiquitin chains, with a preference for 'Lys-63'-linked polyubiquitin chains.

APPLICATION

To ensure optimal assay performance, AREX recommends conducting reagent titration tailored to each testing system for optimal detection results.

WB	1:500 - 1:1000
IHC	1:50 - 1:100

*Results are sample-specific. Please refer to your local assay conditions and test parameters for reference.

PRODUCT OVERVIEW

Description	Rabbit polyclonal antibody to OTUB2
Specificity	Recognizes endogenous levels of OTUB2 protein.
Antibody Type	Primary antibody
Immunogen	KLH-conjugated synthetic peptide encompassing a sequence within the center region of human OTUB2. The exact sequence is proprietary.
Purification	The antibody was purified by immunogen affinity chromatography.
Molecular Weight	Predicted: 27 kD; Observed: 27 kD
Form/Buffer	Liquid in 0.42% Potassium phosphate, 0.87% Sodium chloride, pH 7.3, 30% glycerol, and 0.01% sodium azide.
Alternative Names	C14orf137; OTB2; OTU2; Ubiquitin thioesterase OTUB2; Deubiquitinating enzyme OTUB2; OTU domain-containing ubiquitin aldehyde-binding protein 2; Otubain-2; Ubiquitin-specific-processing protease OTUB2
Gene Symbol	OTUB2
Entrez Gene	78990(Human); 68149(Mouse)
SwissProt	Q96DC9(Human); Q9CQX0(Mouse)

*AREX continuously optimizes our products. Webpage content may not reflect the latest updates. For inquiries, please contact info@arexbio.com or your local distributor.

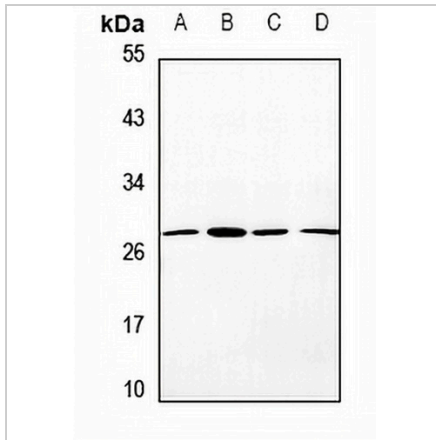
*Clone Number, Reactivity, Source/Host and Clonality can be found in the product name and Key Features section above.

DATASHEET

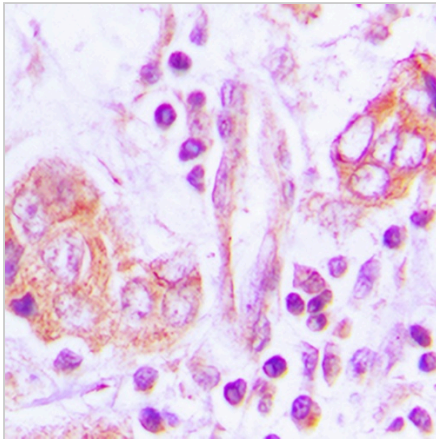
OTUB2 Rabbit Polyclonal Antibody

CAT. NO. APA08202

DATA



Western blot analysis of OTUB2 expression in HepG2 (A), SGC7901 (B), AML12 (C), H9C2 (D) whole cell lysates. (Predicted band size: 27 kD; Observed band size: 27 kD)



Immunohistochemical analysis of OTUB2 staining in human lung cancer formalin fixed paraffin embedded tissue section. The section was pre-treated using heat mediated antigen retrieval with sodium citrate buffer (pH 6.0). The section was then incubated with the antibody at room temperature and detected using an HRP conjugated compact polymer system. DAB was used as the chromogen. The section was then counterstained with haematoxylin and mounted with DPX.

STORAGE

Store at 4°C short term. For long term storage, store at -20°C, avoiding freeze/thaw cycles.

NOTE

For Research Use Only. Not for diagnostic, therapeutics, prophylactic or in vivo use.