

DATASHEET

CHAC1 Rabbit Polyclonal Antibody

CAT. NO. APA08208

KEY FEATURES

Target	CHAC1	Source / Host	Rabbit
Reactivity	Human, Mouse, Rat	Clonality	Polyclonal
Applications	WB	Conjugation	Unconjugated
Form / Buffer	Liquid in 0.42% Potassium phosphate, 0.87% Sodium chloride, pH 7.3, 30% glycerol, and 0.01% sodium azide.		Storage at -20°C

BACKGROUND

Catalyzes the cleavage of glutathione into 5-oxo-L-proline and a Cys-Gly dipeptide. Acts specifically on glutathione, but not on other gamma-glutamyl peptides. Glutathione depletion is an important factor for apoptosis initiation and execution. Acts as a pro-apoptotic component of the unfolded protein response pathway by mediating the pro-apoptotic effects of the ATF4-ATF3-DDIT3/CHOP cascade. Negative regulator of Notch signaling pathway involved in embryonic neurogenesis: acts by inhibiting Notch cleavage by furin, maintaining Notch in an immature inactive form, thereby promoting neurogenesis in embryos.

APPLICATION

To ensure optimal assay performance, AREX recommends conducting reagent titration tailored to each testing system for optimal detection results.

WB	1:500 - 1:1000
----	----------------

*Results are sample-specific. Please refer to your local assay conditions and test parameters for reference.

PRODUCT OVERVIEW

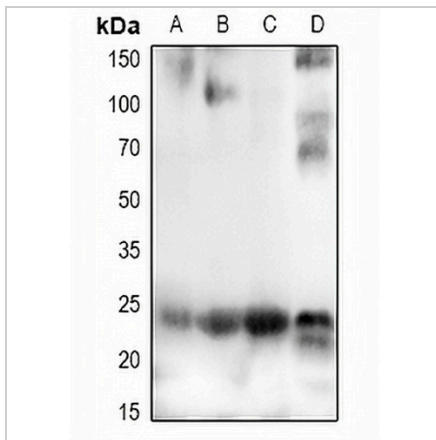
Description	Rabbit polyclonal antibody to CHAC1
Specificity	Recognizes endogenous levels of CHAC1 protein.
Antibody Type	Primary antibody
Immunogen	KLH-conjugated synthetic peptide encompassing a sequence within the N-term region of human CHAC1. The exact sequence is proprietary.
Purification	The antibody was purified by immunogen affinity chromatography.
Molecular Weight	Predicted: 24 kD; Observed: 24 kD
Form/Buffer	Liquid in 0.42% Potassium phosphate, 0.87% Sodium chloride, pH 7.3, 30% glycerol, and 0.01% sodium azide.
Alternative Names	BOTCH; Cation transport regulator-like protein 1; Blocks Notch protein; Botch
Gene Symbol	CHAC1
Entrez Gene	79094(Human); 69065(Mouse); 362196(Rat)
SwissProt	Q9BUX1(Human); Q8R3J5(Mouse); B3STU3(Rat)

*AREX continuously optimizes our products. Webpage content may not reflect the latest updates. For inquiries, please contact info@arexbio.com or your local distributor.

*Clone Number, Reactivity, Source/Host and Clonality can be found in the product name and Key Features section above.

DATASHEET**CHAC1 Rabbit Polyclonal Antibody**

CAT. NO. APA08208

DATA

Western blot analysis of CHAC1 expression in A549 (A), HeLa (B), mouse spleen (C), rat spleen (D) whole cell lysates. (Predicted band size: 24 kD; Observed band size: 24 kD)

STORAGE

Store at 4°C short term. For long term storage, store at -20°C, avoiding freeze/thaw cycles.

NOTE

For Research Use Only. Not for diagnostic, therapeutics, prophylactic or in vivo use.