

**DATASHEET**

**ABHD8 Rabbit Polyclonal Antibody**

CAT. NO. APA08210

**KEY FEATURES**

Target	ABHD8	Source / Host	Rabbit
Reactivity	Human, Mouse, Rat, Bovine, Monkey	Clonality	Polyclonal
Applications	WB, IHC	Conjugation	Unconjugated
Form / Buffer	Liquid in 0.42% Potassium phosphate, 0.87% Sodium chloride, pH 7.3, 30% glycerol, and 0.01% sodium azide.		Storage at -20°C

**BACKGROUND**

Negatively regulates NLRP3-driven inflammation . Promotes NLRP3 degradation through the chaperone-mediated autophagy (CMA) pathway, hence attenuating inflammasome activation and IL1B secretion. Acts by recruiting palmitoyltransferase ZDHHC12 to NLRP3, facilitating NLRP3 palmitoylation and subsequent degradation .

**APPLICATION**

To ensure optimal assay performance, AREX recommends conducting reagent titration tailored to each testing system for optimal detection results.

WB	1:500 - 1:1000
IHC	1:50 - 1:100

\*Results are sample-specific. Please refer to your local assay conditions and test parameters for reference.

**PRODUCT OVERVIEW**

Description	Rabbit polyclonal antibody to ABHD8
Specificity	Recognizes endogenous levels of ABHD8 protein.
Antibody Type	Primary antibody
Immunogen	KLH-conjugated synthetic peptide encompassing a sequence within the center region of human ABHD8. The exact sequence is proprietary.
Purification	The antibody was purified by immunogen affinity chromatography.
Molecular Weight	Predicted: 47 kD; Observed: 55 kD
Form/Buffer	Liquid in 0.42% Potassium phosphate, 0.87% Sodium chloride, pH 7.3, 30% glycerol, and 0.01% sodium azide.
Alternative Names	Abhydrolase domain-containing protein 8
Gene Symbol	ABHD8
Entrez Gene	79575(Human); 64296(Mouse)
SwissProt	Q96I13(Human); Q8R0P8(Mouse)

\*AREX continuously optimizes our products. Webpage content may not reflect the latest updates. For inquiries, please contact [info@arexbio.com](mailto:info@arexbio.com) or your local distributor.

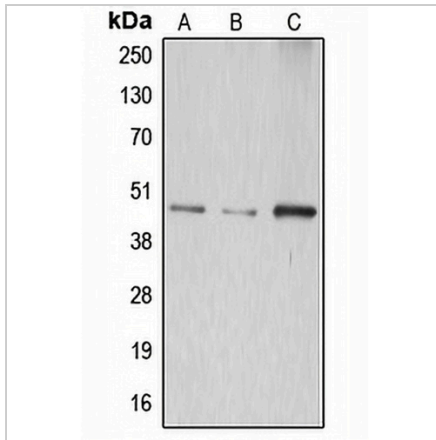
\*Clone Number, Reactivity, Source/Host and Clonality can be found in the product name and Key Features section above.

**DATASHEET**

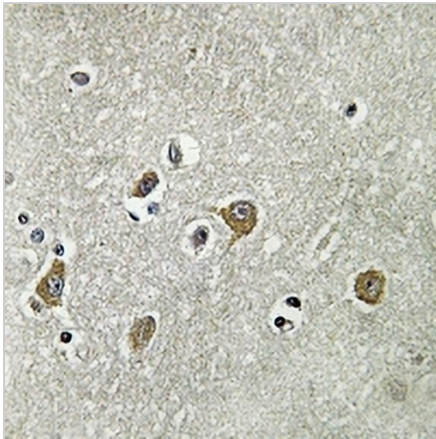
**ABHD8 Rabbit Polyclonal Antibody**

CAT. NO. APA08210

**DATA**



Western blot analysis of ABHD8 expression in HepG2 (A), mouse kidney (B), rat kidney (C) whole cell lysates. (Predicted band size: 47 kD; Observed band size: 55 kD)



Immunohistochemical analysis of ABHD8 staining in human brain formalin fixed paraffin embedded tissue section. The section was pre-treated using heat mediated antigen retrieval with sodium citrate buffer (pH 6.0). The section was then incubated with the antibody at room temperature and detected using an HRP conjugated compact polymer system. DAB was used as the chromogen. The section was then counterstained with haematoxylin and mounted with DPX.

**STORAGE**

Store at 4°C short term. For long term storage, store at -20°C, avoiding freeze/thaw cycles.

**NOTE**

For Research Use Only. Not for diagnostic, therapeutics, prophylactic or in vivo use.