

DATASHEET

ABHD9 Rabbit Polyclonal Antibody

CAT. NO. APA08216

KEY FEATURES

Target	ABHD9	Source / Host	Rabbit
Reactivity	Human, Mouse, Rat, Monkey	Clonality	Polyclonal
Applications	WB, IHC	Conjugation	Unconjugated
Form / Buffer	Liquid in 0.42% Potassium phosphate, 0.87% Sodium chloride, pH 7.3, 30% glycerol, and 0.01% sodium azide.		Storage at -20°C

BACKGROUND

Catalyzes the hydrolysis of epoxide-containing fatty acids. Active in vitro against epoxyeicosatrienoic acids (EETs) including 8,9-EET, 9,10-EET, 11,12-EET and 14,15-EET and leukotoxin.

APPLICATION

To ensure optimal assay performance, AREX recommends conducting reagent titration tailored to each testing system for optimal detection results.

WB	1:500 - 1:1000
IHC	1:100 - 1:200

*Results are sample-specific. Please refer to your local assay conditions and test parameters for reference.

PRODUCT OVERVIEW

Description	Rabbit polyclonal antibody to ABHD9
Specificity	Recognizes endogenous levels of ABHD9 protein.
Antibody Type	Primary antibody
Immunogen	KLH-conjugated synthetic peptide encompassing a sequence within the center region of human ABHD9. The exact sequence is proprietary.
Purification	The antibody was purified by immunogen affinity chromatography.
Molecular Weight	Predicted: 40 kD; Observed: 41 kD
Form/Buffer	Liquid in 0.42% Potassium phosphate, 0.87% Sodium chloride, pH 7.3, 30% glycerol, and 0.01% sodium azide.
Alternative Names	ABHD9; Epoxide hydrolase 3; Abhydrolase domain-containing protein 9
Gene Symbol	EPHX3
Entrez Gene	79852(Human); 71932(Mouse)
SwissProt	Q9H6B9(Human); Q3V1F8(Mouse)

*AREX continuously optimizes our products. Webpage content may not reflect the latest updates. For inquiries, please contact info@arexbio.com or your local distributor.

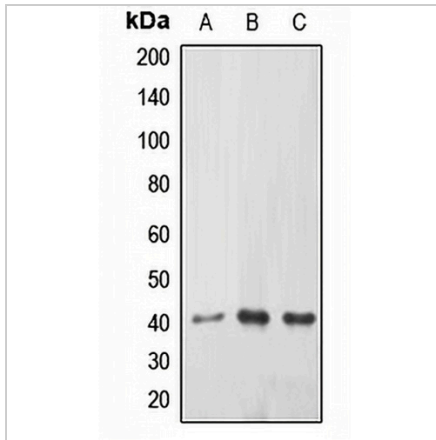
*Clone Number, Reactivity, Source/Host and Clonality can be found in the product name and Key Features section above.

DATASHEET

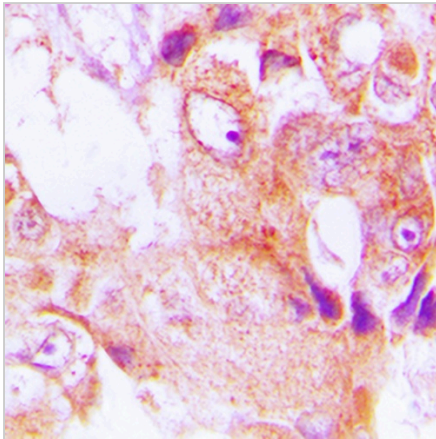
ABHD9 Rabbit Polyclonal Antibody

CAT. NO. APA08216

DATA



Western blot analysis of ABHD9 expression in HEK239T (A), mouse kidney (B), rat kidney (C) whole cell lysates. (Predicted band size: 40 kD; Observed band size: 41 kD)



Immunohistochemical analysis of ABHD9 staining in human lung cancer formalin fixed paraffin embedded tissue section. The section was pre-treated using heat mediated antigen retrieval with sodium citrate buffer (pH 6.0). The section was then incubated with the antibody at room temperature and detected using an HRP conjugated compact polymer system. DAB was used as the chromogen. The section was then counterstained with haematoxylin and mounted with DPX.

STORAGE

Store at 4°C short term. For long term storage, store at -20°C, avoiding freeze/thaw cycles.

NOTE

For Research Use Only. Not for diagnostic, therapeutics, prophylactic or in vivo use.