

DATASHEET

NAA15 Rabbit Polyclonal Antibody

CAT. NO. APA08221

KEY FEATURES

Target	NAA15	Source / Host	Rabbit
Reactivity	Human, Mouse, Rat	Clonality	Polyclonal
Applications	WB, IHC, IF/ICC	Conjugation	Unconjugated
Form / Buffer	Liquid in 0.42% Potassium phosphate, 0.87% Sodium chloride, pH 7.3, 30% glycerol, and 0.01% sodium azide.		Storage at -20°C

BACKGROUND

Auxillary subunit of N-terminal acetyltransferase complexes which display alpha (N-terminal) acetyltransferase (NAT) activity acetyltransferase (NAT) activity . The NAT activity may be important for vascular, hematopoietic and neuronal growth and development . Required to control retinal neovascularization in adult ocular endothelial cells . In complex with XRCC6 and XRCC5 (Ku80), up-regulates transcription from the osteocalcin promoter .

APPLICATION

To ensure optimal assay performance, AREX recommends conducting reagent titration tailored to each testing system for optimal detection results.

WB	1:500 - 1:1000
IHC	1:100 - 1:200
IF/ICC	1:100 - 1:500

*Results are sample-specific. Please refer to your local assay conditions and test parameters for reference.

PRODUCT OVERVIEW

Description	Rabbit polyclonal antibody to NAA15
Specificity	Recognizes endogenous levels of NAA15 protein.
Antibody Type	Primary antibody
Immunogen	KLH-conjugated synthetic peptide encompassing a sequence within the center region of human NAA15. The exact sequence is proprietary.
Purification	The antibody was purified by immunogen affinity chromatography.
Molecular Weight	Predicted: 101 kD; Observed: 101 kD
Form/Buffer	Liquid in 0.42% Potassium phosphate, 0.87% Sodium chloride, pH 7.3, 30% glycerol, and 0.01% sodium azide.
Alternative Names	GA19; NARG1; NATH; TBDN100; N-alpha-acetyltransferase 15, NatA auxiliary subunit; Gastric cancer antigen Ga19; N-terminal acetyltransferase; NMDA receptor-regulated protein 1; Protein tubedown-1; Tbdn100
Gene Symbol	NAA15
Entrez Gene	80155(Human)
SwissProt	Q9BXJ9(Human); Q80UM3(Mouse)

*AREX continuously optimizes our products. Webpage content may not reflect the latest updates. For inquiries, please contact info@arexbio.com or your local distributor.

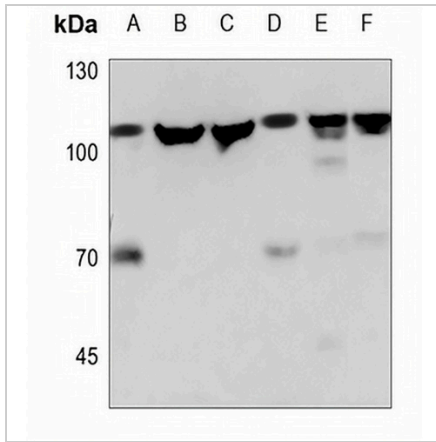
*Clone Number, Reactivity, Source/Host and Clonality can be found in the product name and Key Features section above.

DATASHEET

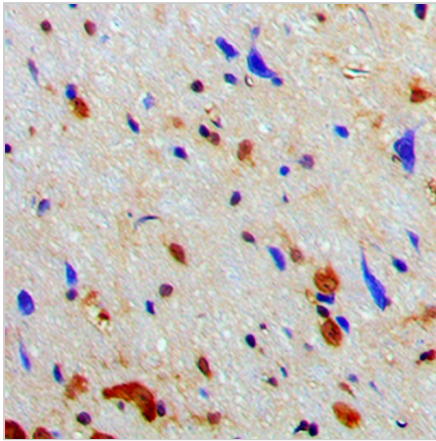
NAA15 Rabbit Polyclonal Antibody

CAT. NO. APA08221

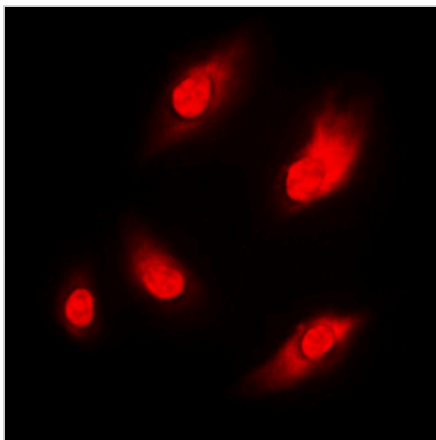
DATA



Western blot analysis of NAA15 expression in A549 (A), DLD (B), H446 (C), mouse muscle (D), mouse testis (E), rat muscle (F) whole cell lysates. (Predicted band size: 101 kD; Observed band size: 101 kD)



Immunohistochemical analysis of NAA15 staining in human brain formalin fixed paraffin embedded tissue section. The section was pre-treated using heat mediated antigen retrieval with sodium citrate buffer (pH 6.0). The section was then incubated with the antibody at room temperature and detected using an HRP conjugated compact polymer system. DAB was used as the chromogen. The section was then counterstained with haematoxylin and mounted with DPX.



Immunofluorescent analysis of NAA15 staining in THP1 cells. Formalin-fixed cells were permeabilized with 0.1% Triton X-100 in TBS for 5-10 minutes and blocked with 3% BSA-PBS for 30 minutes at room temperature. Cells were probed with the primary antibody in 3% BSA-PBS and incubated overnight at 4 °C in a humidified chamber. Cells were washed with PBST and incubated with a DyLight 594-conjugated secondary antibody (red) in PBS at room temperature in the dark.

STORAGE

Store at 4°C short term. For long term storage, store at -20°C, avoiding freeze/thaw cycles.

NOTE

For Research Use Only. Not for diagnostic, therapeutics, prophylactic or in vivo use.