

DATASHEET

CSP Rabbit Polyclonal Antibody

CAT. NO. APA08223

KEY FEATURES

Target	CSP	Source / Host	Rabbit
Reactivity	Human, Mouse, Rat, Monkey	Clonality	Polyclonal
Applications	WB, IF/ICC	Conjugation	Unconjugated
Form / Buffer	Liquid in 0.42% Potassium phosphate, 0.87% Sodium chloride, pH 7.3, 30% glycerol, and 0.01% sodium azide.		Storage at -20°C

BACKGROUND

Acts as a general chaperone in regulated exocytosis . Acts as a co-chaperone for the SNARE protein SNAP-25 . Involved in the calcium-mediated control of a late stage of exocytosis . May have an important role in presynaptic function. May be involved in calcium-dependent neurotransmitter release at nerve endings .

APPLICATION

To ensure optimal assay performance, AREX recommends conducting reagent titration tailored to each testing system for optimal detection results.

WB	1:500 - 1:1000
IF/ICC	1:50 - 1:200

*Results are sample-specific. Please refer to your local assay conditions and test parameters for reference.

PRODUCT OVERVIEW

Description	Rabbit polyclonal antibody to CSP
Specificity	Recognizes endogenous levels of CSP protein.
Antibody Type	Primary antibody
Immunogen	KLH-conjugated synthetic peptide encompassing a sequence within the C-term region of human CSP. The exact sequence is proprietary.
Purification	The antibody was purified by immunogen affinity chromatography.
Molecular Weight	Predicted: 22 kD; Observed: 22; 34 kD
Form/Buffer	Liquid in 0.42% Potassium phosphate, 0.87% Sodium chloride, pH 7.3, 30% glycerol, and 0.01% sodium azide.
Alternative Names	CSP; DnaJ homolog subfamily C member 5; Cysteine string protein; CSP
Gene Symbol	DNAJC5
Entrez Gene	80331(Human); 13002(Mouse); 79130(Rat)
SwissProt	Q9H3Z4(Human); P60904(Mouse); P60905(Rat)

*AREX continuously optimizes our products. Webpage content may not reflect the latest updates. For inquiries, please contact info@arexbio.com or your local distributor.

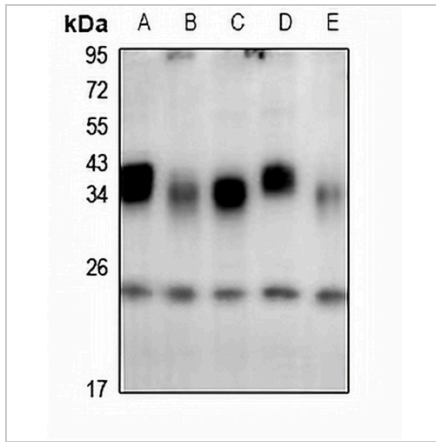
*Clone Number, Reactivity, Source/Host and Clonality can be found in the product name and Key Features section above.

DATASHEET

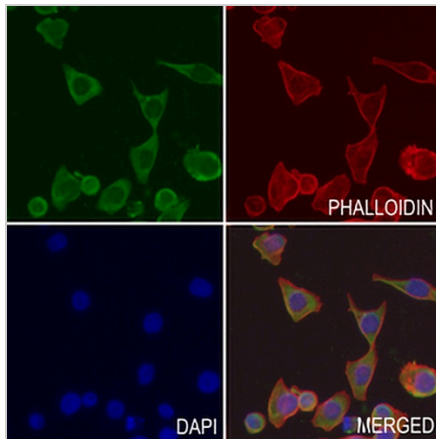
CSP Rabbit Polyclonal Antibody

CAT. NO. APA08223

DATA



Western blot analysis of CSP expression in AML12 (A), PMVEC (B), A549 (C), LO2 (D), H1792 (E) whole cell lysates. (Predicted band size: 22 kD; Observed band size: 22; 34 kD)



Immunofluorescent analysis of CSP staining in MCF7 cells. Formalin-fixed cells were permeabilized with 0.1% Triton X-100 in TBS for 5-10 minutes and blocked with 3% BSA-PBS for 30 minutes at room temperature. Cells were probed with the primary antibody in 3% BSA-PBS and incubated overnight at 4 °C in a humidified chamber. Cells were washed with PBST and incubated with a AREX® Fluor 488 -conjugated secondary antibody (green) in PBS at room temperature in the dark. Phalloidin - AREX® Fluor 594 was used to stain Actin filaments (red). DAPI was used to stain the cell nuclei (blue).

STORAGE

Store at 4°C short term. For long term storage, store at -20°C, avoiding freeze/thaw cycles.

NOTE

For Research Use Only. Not for diagnostic, therapeutics, prophylactic or in vivo use.