

DATASHEET

DNAL1 Rabbit Polyclonal Antibody

CAT. NO. APA08232

KEY FEATURES

Target	DNAL1	Source / Host	Rabbit
Reactivity	Human, Mouse, Rat	Clonality	Polyclonal
Applications	WB, IHC, IF/ICC	Conjugation	Unconjugated
Form / Buffer	Liquid in 0.42% Potassium phosphate, 0.87% Sodium chloride, pH 7.3, 30% glycerol, and 0.01% sodium azide.		Storage at -20°C

BACKGROUND

Part of the multisubunit axonemal ATPase complexes that generate the force for cilia motility and govern beat frequency . Component of the outer arm dynein (ODA). May be involved in a mechanosensory feedback mechanism controlling ODA activity based on external conformational cues by tethering the outer arm dynein heavy chain (DNAH5) to the microtubule within the axoneme . Important for ciliary function in the airways and for the function of the cilia that produce the nodal flow essential for the determination of the left-right asymmetry . May be involved in a mechanosensory feedback mechanism controlling ODA activity based on external conformational cues by tethering the outer arm dynein heavy chain (DNAH5) to the microtubule within the axoneme .

APPLICATION

To ensure optimal assay performance, AREX recommends conducting reagent titration tailored to each testing system for optimal detection results.

WB	1:500 - 1:1000
IHC	1:50 - 1:100
IF/ICC	1:50 - 1:200

*Results are sample-specific. Please refer to your local assay conditions and test parameters for reference.

PRODUCT OVERVIEW

Description	Rabbit polyclonal antibody to DNAL1
Specificity	Recognizes endogenous levels of DNAL1 protein.
Antibody Type	Primary antibody
Immunogen	KLH-conjugated synthetic peptide encompassing a sequence within the center region of human DNAL1. The exact sequence is proprietary.
Purification	The antibody was purified by immunogen affinity chromatography.
Molecular Weight	Predicted: 21 kD; Observed: 32 kD
Form/Buffer	Liquid in 0.42% Potassium phosphate, 0.87% Sodium chloride, pH 7.3, 30% glycerol, and 0.01% sodium azide.
Alternative Names	C14orf168; Dynein light chain 1, axonemal
Gene Symbol	DNAL1
Entrez Gene	83544(Human); 105000(Mouse)
SwissProt	Q4LDG9(Human); Q05A62(Mouse)

*AREX continuously optimizes our products. Webpage content may not reflect the latest updates. For inquiries, please contact info@arexbio.com or your local distributor.

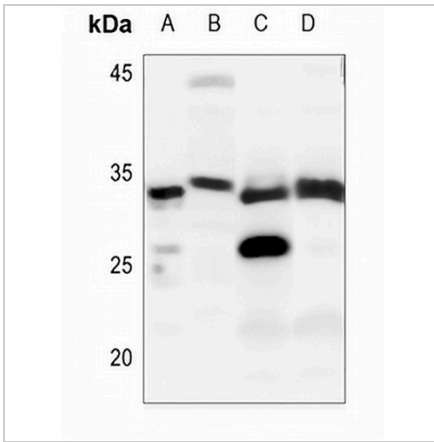
*Clone Number, Reactivity, Source/Host and Clonality can be found in the product name and Key Features section above.

DATASHEET

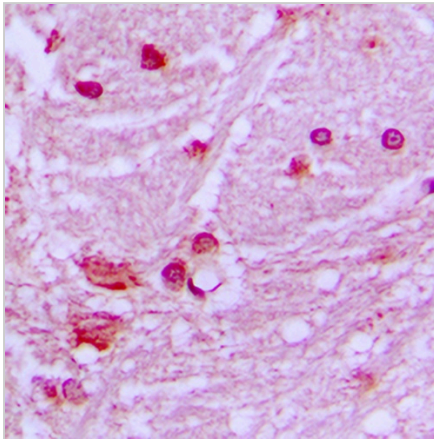
DNAL1 Rabbit Polyclonal Antibody

CAT. NO. APA08232

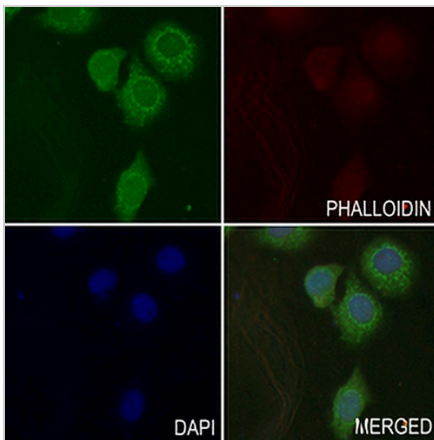
DATA



Western blot analysis of DNAL1 expression in MCF7 (A), U2OS (B), mouse testis (C), rat testis (D) whole cell lysates. (Predicted band size: 21 kD; Observed band size: 32 kD)



Immunohistochemical analysis of DNAL1 staining in human brain formalin fixed paraffin embedded tissue section. The section was pre-treated using heat mediated antigen retrieval with sodium citrate buffer (pH 6.0). The section was then incubated with the antibody at room temperature and detected using an HRP conjugated compact polymer system. DAB was used as the chromogen. The section was then counterstained with haematoxylin and mounted with DPX.



Immunofluorescent analysis of DNAL1 staining in A549 cells. Formalin-fixed cells were permeabilized with 0.1% Triton X-100 in TBS for 5-10 minutes and blocked with 3% BSA-PBS for 30 minutes at room temperature. Cells were probed with the primary antibody in 3% BSA-PBS and incubated overnight at 4 °C in a humidified chamber. Cells were washed with PBST and incubated with a AREX® Fluor 488 -conjugated secondary antibody (green) in PBS at room temperature in the dark. Phalloidin - AREX® Fluor 594 was used to stain Actin filaments (red). DAPI was used to stain the cell nuclei (blue).

STORAGE

Store at 4°C short term. For long term storage, store at -20°C, avoiding freeze/thaw cycles.

NOTE

For Research Use Only. Not for diagnostic, therapeutics, prophylactic or in vivo use.