

DATASHEET

AGBL4 Rabbit Polyclonal Antibody

CAT. NO. APA08247

KEY FEATURES

Target	AGBL4	Source / Host	Rabbit
Reactivity	Human, Mouse, Rat	Clonality	Polyclonal
Applications	WB, IHC	Conjugation	Unconjugated
Form / Buffer	Liquid in 0.42% Potassium phosphate, 0.87% Sodium chloride, pH 7.3, 30% glycerol, and 0.01% sodium azide.		Storage at -20°C

BACKGROUND

Metalloprotease that mediates protein deglutamylation of tubulin and non-tubulin target proteins. Catalyzes the removal of polyglutamate side chains present on the gamma-carboxyl group of glutamate residues within the C-terminal tail of tubulin protein. Specifically cleaves tubulin long-side-chains, while it is not able to remove the branching point glutamate. Also catalyzes the removal of polyglutamate residues from the carboxy-terminus of non-tubulin proteins such as MYLK. Mediates the deglutamylation of nucleotidyltransferase CGAS, leading to CGAS antiviral defense response activation. Involved in KLF4 deglutamylation which promotes KLF4 proteasome-mediated degradation, thereby negatively regulating cell pluripotency maintenance and embryogenesis.

APPLICATION

To ensure optimal assay performance, AREX recommends conducting reagent titration tailored to each testing system for optimal detection results.

WB	1:500 - 1:1000
IHC	1:50 - 1:100

*Results are sample-specific. Please refer to your local assay conditions and test parameters for reference.

PRODUCT OVERVIEW

Description	Rabbit polyclonal antibody to AGBL4
Specificity	Recognizes endogenous levels of AGBL4 protein.
Antibody Type	Primary antibody
Immunogen	KLH-conjugated synthetic peptide encompassing a sequence within the C-term region of human AGBL4. The exact sequence is proprietary.
Purification	The antibody was purified by immunogen affinity chromatography.
Molecular Weight	Predicted: 58 kD; Observed: 72 kD
Form/Buffer	Liquid in 0.42% Potassium phosphate, 0.87% Sodium chloride, pH 7.3, 30% glycerol, and 0.01% sodium azide.
Alternative Names	CCP6; Cytosolic carboxypeptidase 6; ATP/GTP-binding protein-like 4
Gene Symbol	AGBL4
Entrez Gene	84871(Human)
SwissProt	Q5VU57(Human)

*AREX continuously optimizes our products. Webpage content may not reflect the latest updates. For inquiries, please contact info@arexbio.com or your local distributor.

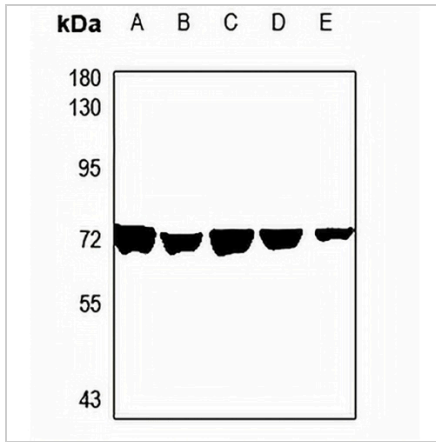
*Clone Number, Reactivity, Source/Host and Clonality can be found in the product name and Key Features section above.

DATASHEET

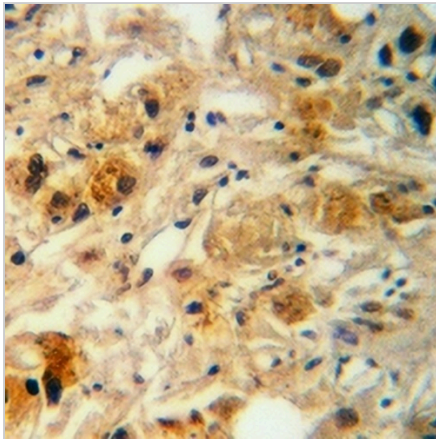
AGBL4 Rabbit Polyclonal Antibody

CAT. NO. APA08247

DATA



Western blot analysis of AGBL4 expression in CT26 (A), PC12 (B), HeLa (C), COS7 (D), PC3 (E) whole cell lysates. (Predicted band size: 58 kD; Observed band size: 72 kD)



Immunohistochemical analysis of AGBL4 staining in human colorectal cancer formalin fixed paraffin embedded tissue section. The section was pre-treated using heat mediated antigen retrieval with sodium citrate buffer (pH 6.0). The section was then incubated with the antibody at room temperature and detected using an HRP conjugated compact polymer system. DAB was used as the chromogen. The section was then counterstained with haematoxylin and mounted with DPX.

STORAGE

Store at 4°C short term. For long term storage, store at -20°C, avoiding freeze/thaw cycles.

NOTE

For Research Use Only. Not for diagnostic, therapeutics, prophylactic or in vivo use.