

DATASHEET

ABCC11 Rabbit Polyclonal Antibody

CAT. NO. APA08251

KEY FEATURES

Target	ABCC11	Source / Host	Rabbit
Reactivity	Human, Mouse, Rat	Clonality	Polyclonal
Applications	WB	Conjugation	Unconjugated
Form / Buffer	Liquid in 0.42% Potassium phosphate, 0.87% Sodium chloride, pH 7.3, 30% glycerol, and 0.01% sodium azide.		Storage at -20°C

BACKGROUND

ATP-dependent transporter of the ATP-binding cassette (ABC) family that actively extrudes physiological compounds and xenobiotics from cells. Plays a role in physiological processes involving bile acids, conjugated steroids and cyclic nucleotides, including cAMP and cGMP family that actively extrudes physiological compounds and xenobiotics from cells. Plays a role in physiological processes involving bile acids, conjugated steroids and cyclic nucleotides, including cAMP and cGMP .

APPLICATION

To ensure optimal assay performance, AREX recommends conducting reagent titration tailored to each testing system for optimal detection results.

WB	1:500 - 1:1000
----	----------------

*Results are sample-specific. Please refer to your local assay conditions and test parameters for reference.

PRODUCT OVERVIEW

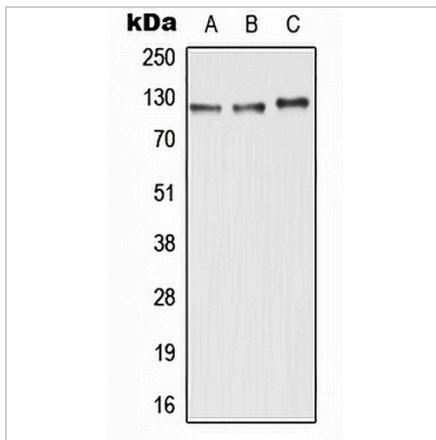
Description	Rabbit polyclonal antibody to ABCC11
Specificity	Recognizes endogenous levels of ABCC11 protein.
Antibody Type	Primary antibody
Immunogen	KLH-conjugated synthetic peptide encompassing a sequence within the N-term region of human ABCC11. The exact sequence is proprietary.
Purification	The antibody was purified by immunogen affinity chromatography.
Molecular Weight	Predicted: 154 kD; Observed: 120 kD
Form/Buffer	Liquid in 0.42% Potassium phosphate, 0.87% Sodium chloride, pH 7.3, 30% glycerol, and 0.01% sodium azide.
Alternative Names	MRP8; ATP-binding cassette sub-family C member 11; Multidrug resistance-associated protein 8
Gene Symbol	ABCC11
Entrez Gene	85320(Human)
SwissProt	Q96J66(Human)

*AREX continuously optimizes our products. Webpage content may not reflect the latest updates. For inquiries, please contact info@arexbio.com or your local distributor.

*Clone Number, Reactivity, Source/Host and Clonality can be found in the product name and Key Features section above.

DATASHEET**ABCC11 Rabbit Polyclonal Antibody**

CAT. NO. APA08251

DATA

Western blot analysis of ABCC11 expression in HepG2 (A), Raw264.7 (B), H9C2 (C) whole cell lysates. (Predicted band size: 154 kD; Observed band size: 120 kD)

STORAGE

Store at 4°C short term. For long term storage, store at -20°C, avoiding freeze/thaw cycles.

NOTE

For Research Use Only. Not for diagnostic, therapeutics, prophylactic or in vivo use.