

DATASHEET

MRP7 Rabbit Polyclonal Antibody

CAT. NO. APA08253

KEY FEATURES

Target	MRP7	Source / Host	Rabbit
Reactivity	Human	Clonality	Polyclonal
Applications	WB, IHC	Conjugation	Unconjugated
Form / Buffer	Liquid in 0.42% Potassium phosphate, 0.87% Sodium chloride, pH 7.3, 30% glycerol, and 0.01% sodium azide.		Storage at -20°C

BACKGROUND

ATP-dependent transporter of the ATP-binding cassette (ABC) family that actively extrudes physiological compounds, and xenobiotics from cells. Lipophilic anion transporter that mediates ATP-dependent transport of glucuronide conjugates such as estradiol-17-beta-o-glucuronide and GSH conjugates such as leukotriene C4 (LTC4) family that actively extrudes physiological compounds, and xenobiotics from cells. Lipophilic anion transporter that mediates ATP-dependent transport of glucuronide conjugates such as estradiol-17-beta-o-glucuronide and GSH conjugates such as leukotriene C4 (LTC4) . May regulate the transport of organic compounds in testes across the blood-testis-barrier (Probable). Mediates intercellular propagation of antiviral immune signaling in early stages of infection .

APPLICATION

To ensure optimal assay performance, AREX recommends conducting reagent titration tailored to each testing system for optimal detection results.

WB	1:500 - 1:1000
IHC	1:50 - 1:200

*Results are sample-specific. Please refer to your local assay conditions and test parameters for reference.

PRODUCT OVERVIEW

Description	Rabbit polyclonal antibody to MRP7
Specificity	Recognizes endogenous levels of MRP7 protein.
Antibody Type	Primary antibody
Immunogen	KLH-conjugated synthetic peptide encompassing a sequence within the center region of human MRP7. The exact sequence is proprietary.
Purification	The antibody was purified by immunogen affinity chromatography.
Molecular Weight	Predicted: 161 kD; Observed: 162 kD
Form/Buffer	Liquid in 0.42% Potassium phosphate, 0.87% Sodium chloride, pH 7.3, 30% glycerol, and 0.01% sodium azide.
Alternative Names	MRP7; SIMRP7; Multidrug resistance-associated protein 7; ATP-binding cassette sub-family C member 10
Gene Symbol	ABCC10
Entrez Gene	89845(Human)
SwissProt	Q5T3U5(Human)

*AREX continuously optimizes our products. Webpage content may not reflect the latest updates. For inquiries, please contact info@arexbio.com or your local distributor.

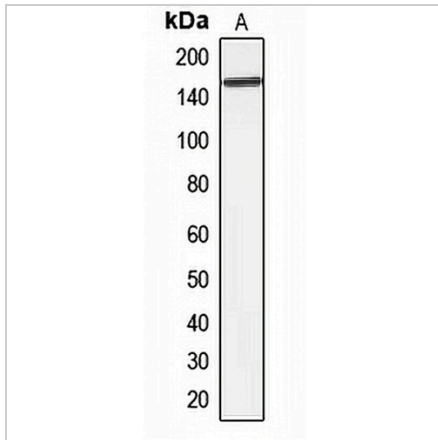
*Clone Number, Reactivity, Source/Host and Clonality can be found in the product name and Key Features section above.

DATASHEET

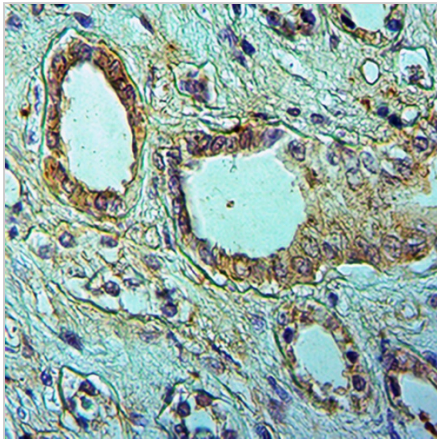
MRP7 Rabbit Polyclonal Antibody

CAT. NO. APA08253

DATA



Western blot analysis of MRP7 expression in HepG2 (A) whole cell lysates. (Predicted band size: 161 kD; Observed band size: 162 kD)



Immunohistochemical analysis of MRP7 Antibody staining in human kidney cancer formalin fixed paraffin embedded tissue section. The section was pre-treated using heat mediated antigen retrieval with sodium citrate buffer (pH 6.0). The section was then incubated with the antibody at room temperature and detected using an HRP conjugated compact polymer system. DAB was used as the chromogen. The section was then counterstained with haematoxylin and mounted with DPX.

STORAGE

Store at 4°C short term. For long term storage, store at -20°C, avoiding freeze/thaw cycles.

NOTE

For Research Use Only. Not for diagnostic, therapeutics, prophylactic or in vivo use.