

DATASHEET

ODC Rabbit Polyclonal Antibody

CAT. NO. APA08254

KEY FEATURES

Target	ODC	Source / Host	Rabbit
Reactivity	Human, Mouse, Rat	Clonality	Polyclonal
Applications	WB, IHC	Conjugation	Unconjugated
Form / Buffer	Liquid in 0.42% Potassium phosphate, 0.87% Sodium chloride, pH 7.3, 30% glycerol, and 0.01% sodium azide.		Storage at -20°C

BACKGROUND

Transports dicarboxylates across the inner membranes of mitochondria by a counter-exchange mechanism. Can transport 2-oxoadipate (2-oxohexanedioate), 2-oxoglutarate, adipate (hexanedioate), glutarate, and to a lesser extent, pimelate (heptanedioate), 2-oxopimelate (2-oxoheptanedioate), 2-aminoadipate (2-aminohexanedioate), oxaloacetate, and citrate. Plays a central role in catabolism of lysine, hydroxylysine, and tryptophan, by transporting common metabolite intermediates (such as 2-oxoadipate) into the mitochondria, where it is converted into acetyl-CoA and can enter the citric acid (TCA) cycle (Probable).

APPLICATION

To ensure optimal assay performance, AREX recommends conducting reagent titration tailored to each testing system for optimal detection results.

WB	1:500 - 1:1000
IHC	1:100 - 1:200

*Results are sample-specific. Please refer to your local assay conditions and test parameters for reference.

PRODUCT OVERVIEW

Description	Rabbit polyclonal antibody to ODC
Specificity	Recognizes endogenous levels of ODC protein.
Antibody Type	Primary antibody
Immunogen	KLH-conjugated synthetic peptide encompassing a sequence within the center region of human ODC. The exact sequence is proprietary.
Purification	The antibody was purified by immunogen affinity chromatography.
Molecular Weight	Predicted: 33 kD; Observed: 33 kD
Form/Buffer	Liquid in 0.42% Potassium phosphate, 0.87% Sodium chloride, pH 7.3, 30% glycerol, and 0.01% sodium azide.
Alternative Names	ODC; Mitochondrial 2-oxodicarboxylate carrier; Solute carrier family 25 member 21
Gene Symbol	SLC25A21
Entrez Gene	89874(Human)
SwissProt	Q9BQT8(Human)

*AREX continuously optimizes our products. Webpage content may not reflect the latest updates. For inquiries, please contact info@arexbio.com or your local distributor.

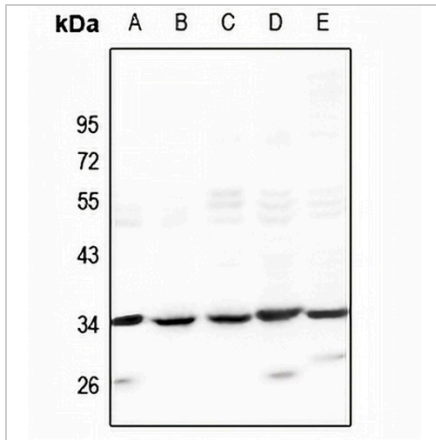
*Clone Number, Reactivity, Source/Host and Clonality can be found in the product name and Key Features section above.

DATASHEET

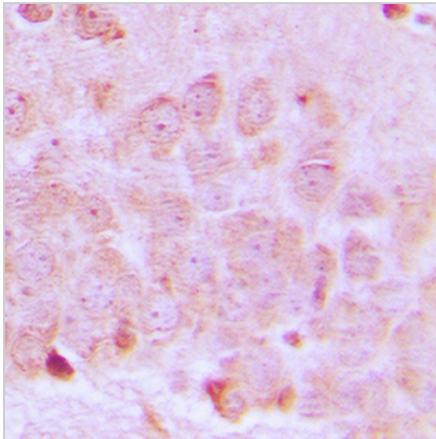
ODC Rabbit Polyclonal Antibody

CAT. NO. APA08254

DATA



Western blot analysis of ODC expression in HeLa (A), HepG2 (B), LO2 (C), PC12 (D), AML12 (E) whole cell lysates. (Predicted band size: 33 kD; Observed band size: 33 kD)



Immunohistochemical analysis of ODC staining in human brain formalin fixed paraffin embedded tissue section. The section was pre-treated using heat mediated antigen retrieval with sodium citrate buffer (pH 6.0). The section was then incubated with the antibody at room temperature and detected using an HRP conjugated compact polymer system. DAB was used as the chromogen. The section was then counterstained with haematoxylin and mounted with DPX.

STORAGE

Store at 4°C short term. For long term storage, store at -20°C, avoiding freeze/thaw cycles.

NOTE

For Research Use Only. Not for diagnostic, therapeutics, prophylactic or in vivo use.